

Dorothee Bornhorst | Salim Abdelilah-Seyfried

Strong as a Hippo's Heart: Biomechanical Hippo Signaling During Zebrafish Cardiac Development

Suggested citation referring to the original publication:

Frontiers in Cell and Developmental Biology 9 (2021) , Art. 731101 pp. 1 - 10

DOI <https://doi.org/10.3389/fcell.2021.731101>

ISSN 2296-634X

Journal article | Version of record

Secondary publication archived on the Publication Server of the University of Potsdam:

ISSN: 1866-8372

<https://nbn-resolving.org/urn:nbn:de:kobv:517-opus4-548731>

DOI: <https://doi.org/10.25932/publishup-54873>

Terms of use:

This work is licensed under a Creative Commons License. This does not apply to quoted content from other authors. To view a copy of this license visit

<https://creativecommons.org/licenses/by/4.0/>.



Strong as a Hippo's Heart: Biomechanical Hippo Signaling During Zebrafish Cardiac Development

Dorothee Bornhorst^{1,2} and Salim Abdellah-Seyfried^{3,4*}

¹ Stem Cell Program, Division of Hematology and Oncology, Boston Children's Hospital, Boston, MA, United States,

² Department of Stem Cell and Regenerative Biology, Harvard University, Cambridge, MA, United States, ³ Institute

of Biochemistry and Biology, University of Potsdam, Potsdam, Germany, ⁴ Institute of Molecular Biology, Hannover Medical School, Hanover, Germany

OPEN ACCESS

Edited by:

Andrea Erika Münsterberg,
University of East Anglia,
United Kingdom

Reviewed by:

Thomas Brand,
Imperial College London,
United Kingdom
Katherine Yutzey,
Cincinnati Children's Hospital Medical
Center, United States

*Correspondence:

Salim Abdellah-Seyfried
salim.seyfried@uni-potsdam.de

Specialty section:

This article was submitted to
Morphogenesis and Patterning,
a section of the journal
Frontiers in Cell and Developmental
Biology

Received: 26 June 2021

Accepted: 20 July 2021

Published: 05 August 2021

Citation:

Bornhorst D and
Abdellah-Seyfried S (2021) Strong as
a Hippo's Heart: Biomechanical
Hippo Signaling During Zebrafish
Cardiac Development.
Front. Cell Dev. Biol. 9:731101.
doi: 10.3389/fcell.2021.731101

The heart is comprised of multiple tissues that contribute to its physiological functions. During development, the growth of myocardium and endocardium is coupled and morphogenetic processes within these separate tissue layers are integrated. Here, we discuss the roles of mechanosensitive Hippo signaling in growth and morphogenesis of the zebrafish heart. Hippo signaling is involved in defining numbers of cardiac progenitor cells derived from the secondary heart field, in restricting the growth of the epicardium, and in guiding trabeculation and outflow tract formation. Recent work also shows that myocardial chamber dimensions serve as a blueprint for Hippo signaling-dependent growth of the endocardium. Evidently, Hippo pathway components act at the crossroads of various signaling pathways involved in embryonic zebrafish heart development. Elucidating how biomechanical Hippo signaling guides heart morphogenesis has direct implications for our understanding of cardiac physiology and pathophysiology.

Keywords: Hippo signaling, Yap1/Wwtr1 (Taz), cardiac development, mechanobiology, endocardium, myocardium, zebrafish, intra-organ-communication

INTRODUCTION

The Hippo signaling pathway is a key regulator of organ size and cell proliferation (Justice et al., 1995; Xu et al., 1995) in response to mechanical tension [(Dupont et al., 2011) and reviewed in Low et al. (2014)]. When Hippo signaling is active, the two Mammalian Sterile 20-like kinases (MST)1/2 and their phosphorylation targets Large tumor suppressor kinases (LATS)1/2 are in a phosphorylated state (Hergovich et al., 2006; Yin et al., 2013; **Figure 1**). YAP1 and WWTR1 are direct phosphorylation targets of LATS1/2, which causes their 14-3-3-mediated cytoplasmic retention and SCF-mediated degradation (Zhao et al., 2007, 2010; Liu et al., 2010). This prevents proliferative growth within the tissue or organ. Under mechanical stress or conditions of tissue crowding, Hippo signaling is off and the YAP1/WWTR1 transcriptional co-activators remain unphosphorylated and localize to the nucleus. There they bind members of the TEAD transcription factor family and activate proliferative target gene expression [reviewed in Zhao et al. (2008), Meng et al. (2016)].

In vertebrates, Hippo pathway components are key regulators of cardiovascular development [reviewed in Xiao et al. (2016); Ma et al. (2019)] and cardiac regeneration [reviewed in Mia and Singh (2019), Zheng et al. (2020)]. In mice, inactivation of Hippo pathway components in the developing heart caused cardiomyocyte overproliferation and increased size of the heart (Heallen et al., 2011). Consistently, overexpression of YAP within cardiomyocytes had the same effect (Von Gise et al., 2012). The transcriptional co-activators YAP1/WWTR1 (TAZ) are also involved in epicardial development and cell proliferation, epithelial-to-mesenchymal transition (EMT), and epicardial cell fate specification (Zhang et al., 2014; Singh et al., 2016). During murine cardiac cushion development, YAP1 potentiates TGF-driven Smad signaling, which regulates expression of the EMT-regulating target genes *Snail*, *Slug*, and *Twist1* (Zhang et al., 2014). Mechanical force directed at nuclei of mouse embryonic fibroblasts and epithelial cells was sufficient for the nuclear translocation of YAP1 protein (Elosegui-Artola et al., 2017). Similarly, mechanical stretching of an epithelial monolayer composed of MCF10A and MII cells *in vitro* induced entry of YAP1/WWTR1 into the nucleus and stimulated proliferation, which depended on the shape or the rigidity of the surrounding extracellular matrix (Aragona et al., 2013). This finding suggests that external strain forces can overcome the inhibition of YAP1/WWTR1 in growth-arrested or contact-inhibited cells. In zebrafish endothelial cells, Yap1 controls proliferation in response to blood flow and is essential for blood vessel maintenance (Nakajima et al., 2017). In this context, F-actin and Angiomotin affected the fluid flow-induced nuclear localization of Yap1. The apical polarity Crumbs complex with its associated proteins and cell junctional proteins can affect Hippo signaling [reviewed in Ma et al. (2019), Martin et al. (2021)]. The tight junctional protein Zona Occludens 2 (ZO-2) responds to high compression or tensile forces and directly interacts with YAP1/WWTR1 when these proteins shuttle between cell junctions, cytoplasm, and nucleus (Oka et al., 2010, 2012). Stretch-induced YAP1/WWTR1-dependent proliferation of murine endothelial cells was regulated by the mechanosensitive junctional protein Cadherin-5 (VE-Cadherin), indicating that mechanical stimulation at cell-cell junctions acts as a proliferative cue (Neto et al., 2018).

Zebrafish has evolved as a powerful model organism to study the role of mechanobiology during cardiovascular development. Zebrafish embryos can survive without a heartbeat throughout early development (Sehnert et al., 2002). This has facilitated experimental procedures with an altered cardiac contractility or blood flow that are not possible in other vertebrates. For instance, the formation of cardiac valves in response to blood flow [reviewed in Steed et al. (2016a), Paolini and Abdelilah-Seyfried (2018)], the delamination of myocardial cells during trabeculation (Staudt et al., 2014; Jiménez-Amilburu et al., 2016; Lai et al., 2018; Priya et al., 2020), or the development of proepicardium (Serluca, 2008; Peralta et al., 2013, 2020; Andrés-Delgado et al., 2019, 2020) have been subjects of studies with unprecedented cellular resolution.

The role of mechanobiology in zebrafish cardiac morphogenesis and cell fate specification has been the focus of several recent reviews (Haack and Abdelilah-Seyfried, 2016;

Paolini and Abdelilah-Seyfried, 2018; Duchemin et al., 2019b; Gunawan et al., 2021). Here, we only review the latest findings on biomechanical Hippo signaling during zebrafish cardiac development (Figure 2). From these studies, a complex picture emerges of Hippo signaling interactions with other signaling pathways in various cardiac developmental processes.

HIPPO SIGNALING AFFECTS THE ACCRETION OF SECONDARY HEART FIELD-DERIVED CARDIAC PROGENITOR CELLS INTO THE ATRIAL CHAMBER

The formation of the zebrafish heart involves the migration of cardiac progenitor cells from the lateral plate mesoderm toward the embryonic midline. This process and the formation of the nascent zebrafish heart cone has been focus of previous reviews (Staudt and Stainier, 2012; Haack and Abdelilah-Seyfried, 2016). Of note, during heart cone assembly, Yap1 signaling is required for the survival of endodermal cells (Fukui et al., 2014), an essential tissue layer on which cardiac progenitor cells migrate. Mutants lacking endoderm (George et al., 1997; Schier et al., 1997; Zhang et al., 1998; Alexander et al., 1999; Reiter et al., 1999) or sphingosine 1-phosphate (S1P) signaling (Kupperman et al., 2000; Osborne et al., 2008) result in cardia bifida, a condition in which the two bilateral cardiac progenitor cell populations fail to reach the embryonic midline. In that study, the authors found that S1P signaling within the endodermal layer is required for Yap1 activity and the expression of the Yap1 target gene *connective tissue growth factor a*. In turn, this growth factor is essential for the survival of the endoderm (Fukui et al., 2014). In a related study, Miesfeld and Link (2014) identified an involvement of Yap1 in cardiac progenitor cell migration. They generated a transgenic Yap/Wwtr1-Tead activity reporter line, which indicated that Hippo signaling was active during cardiac progenitor cell migration. When overexpressing a dominant-negative transgene that prevented the interaction between Yap1/Wwtr1 and Tead, cardiac progenitor cell migration to the midline was impaired (Miesfeld and Link, 2014).

Another recent study by Fukui et al. (2018) expanded on their earlier discovery that Yap1 signaling indirectly affects cardiac progenitor cell migration. Here, they discovered a direct role of Hippo signaling within the anterior lateral plate mesoderm among a subset of secondary heart field-derived cardiac progenitor cells. Yap1 was required in *hand2*- and *islet1*-expressing myocardial cells that migrate to the venous pole of the heart. Mutants lacking *Lats1/2* kinases had significantly increased numbers of *islet1*-positive atrial myocardial cells while a loss of Yap1/Wwtr1 had the opposite effect. That study also employed a transgenic Yap1/Wwtr1-Tead activity reporter line, which showed enhanced activity in *lats1/2* double mutants. This suggested these kinases restrict Yap1/Wwtr1-Tead activation during early myocardial determination. The mechanism of Yap1/Wwtr1 activity involved the upregulation of *hand2* and *bmp2* expression, which resulted in the phosphorylation of

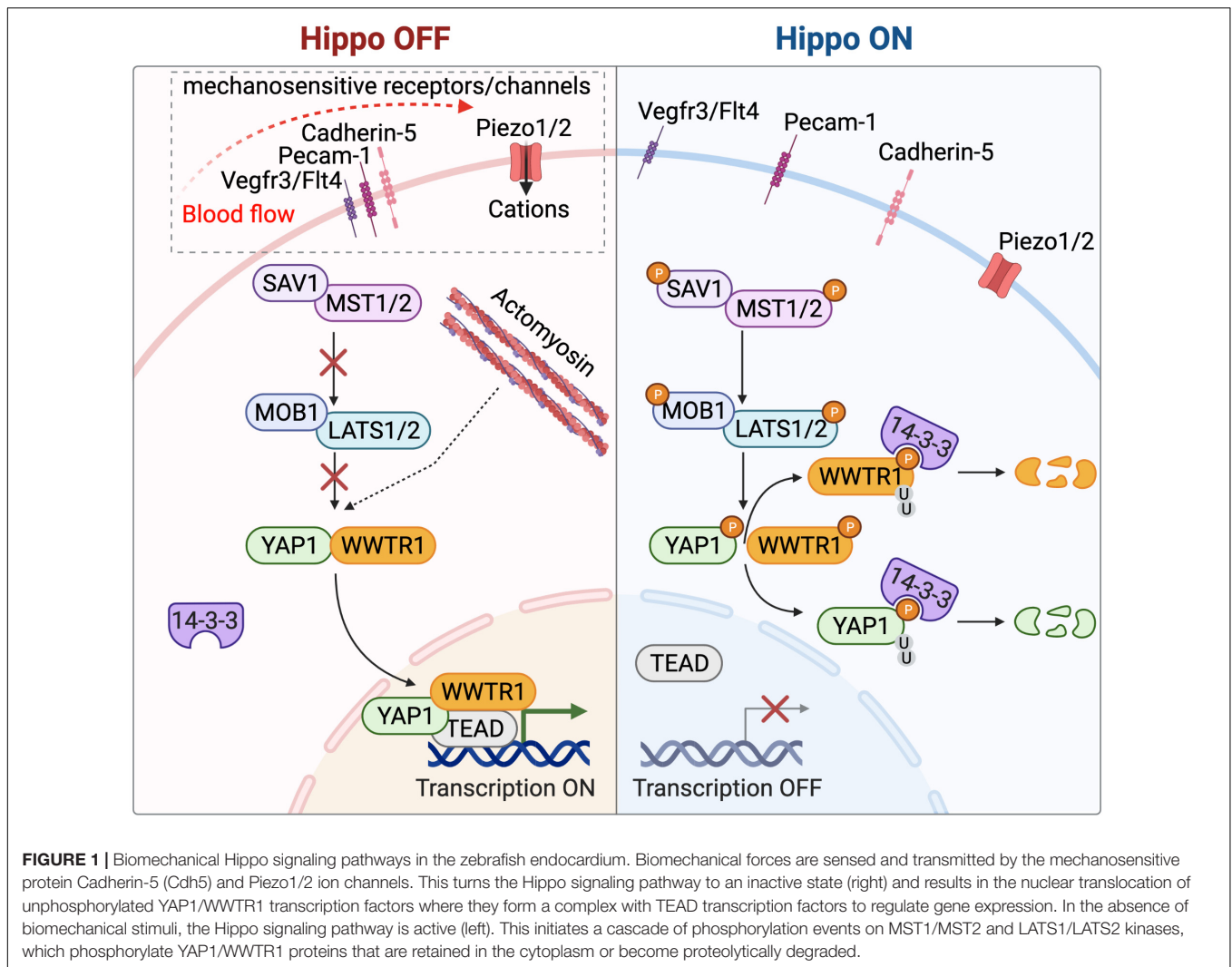


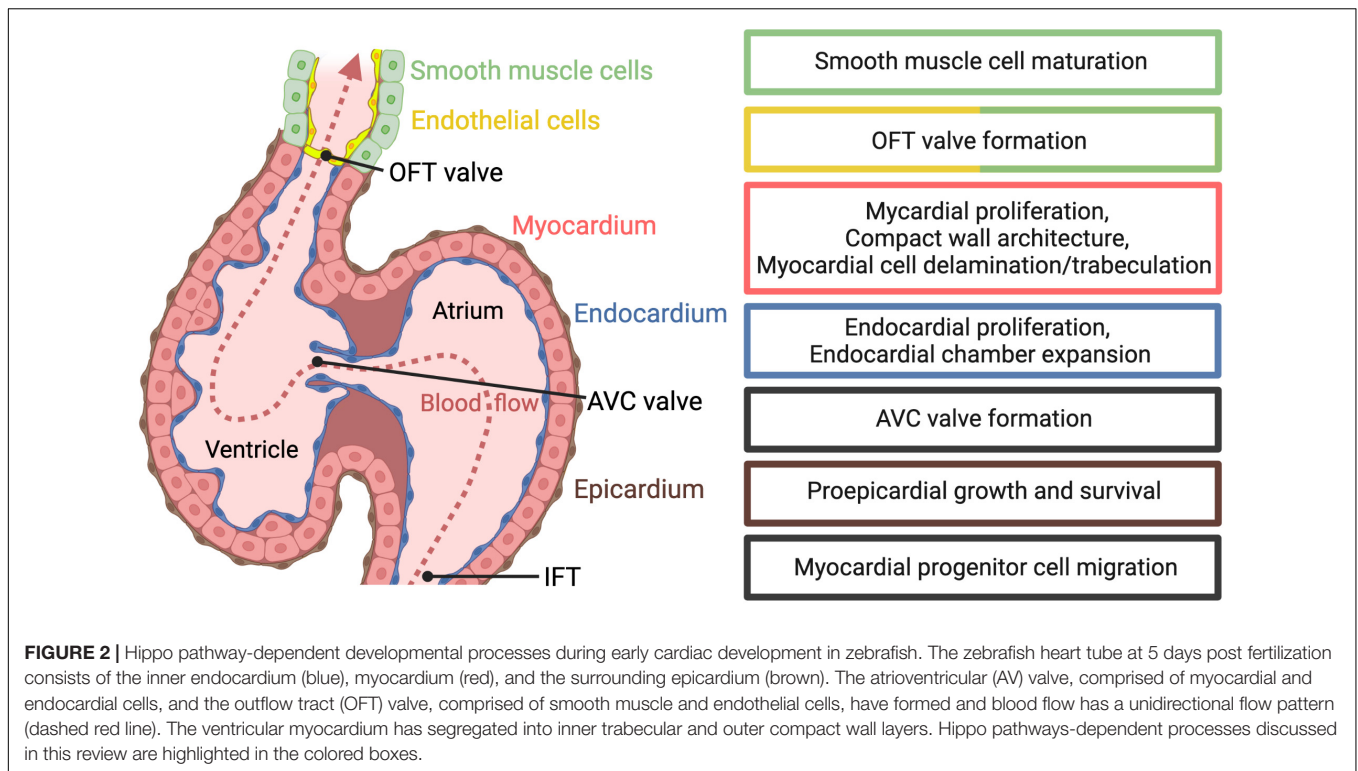
FIGURE 1 | Biomechanical Hippo signaling pathways in the zebrafish endocardium. Biomechanical forces are sensed and transmitted by the mechanosensitive protein Cadherin-5 (Cdh5) and Piezo1/2 ion channels. This turns the Hippo signaling pathway to an inactive state (right) and results in the nuclear translocation of unphosphorylated YAP1/WWTR1 transcription factors where they form a complex with TEAD transcription factors to regulate gene expression. In the absence of biomechanical stimuli, the Hippo signaling pathway is active (left). This initiates a cascade of phosphorylation events on MST1/MST2 and LATS1/LATS2 kinases, which phosphorylate YAP1/WWTR1 proteins that are retained in the cytoplasm or become proteolytically degraded.

Smad1/5/9 in myocardial progenitor cells. Conversely, loss of *Lats1/2* caused increased *hand2* expression and increased numbers of myocardial progenitor cells at the venous pole. Hence, these functional studies suggest, Hippo signaling restricts the accretion of myocardial progenitor cells to the venous pole by suppressing Yap1/Wwtr1-dependent *Bmp2b* signaling and *hand2* expression (Fukui et al., 2018). However, whether this process is dependent on mechanical stimuli within the anterior lateral plate mesoderm that regulates cell migration toward the venous pole of the heart will be an exciting topic for further investigations. Of note, *Hand2* is a regulator of Fibronectin expression (Garavito-Aguilar et al., 2010), which is an important substrate for cardiac progenitor cell migration during early cardiogenesis (Trinh and Stainier, 2004). Loss of *Hand2* causes cardiac bifida and increased *fibronectin* expression. Molecularly, *Hand2* negatively regulates Fibronectin signaling to establishes a favorable milieu for cardiac fusion (Garavito-Aguilar et al., 2010). Hence, it is plausible that Hippo-*Hand2*-Fibronectin signaling may represent a second pathway controlling early cardiac progenitor cell migrations.

TENSILE FORCES TRIGGER YAP1-DEPENDENT ENDOCARDIAL CELL PROLIFERATION

During cardiac ballooning, chamber dimensions approximately double in size. Within the myocardial layer, this is due to the accretion of progenitor cells to both poles of the heart (inflow and outflow tract) (de Pater et al., 2009; Hami et al., 2011; Lazic and Scott, 2011; Zhou et al., 2011) and cell size increases (Auman et al., 2007; Samsa et al., 2015). However, endocardial chamber dimensions increase due to proliferation without a substantial accretion of external progenitor cells (Dietrich et al., 2015). Previous studies did not address how endocardial cell proliferation is triggered.

A recent study addressed the role of Yap1 during endocardial chamber expansion. Using a laser-dissection approach (Behrndt et al., 2012), the authors first quantified whether an expansion of myocardial chamber dimensions causes an increase of tensile forces on endocardial cell junctions (Bornhorst et al., 2019). When using zebrafish models with increased cardiac



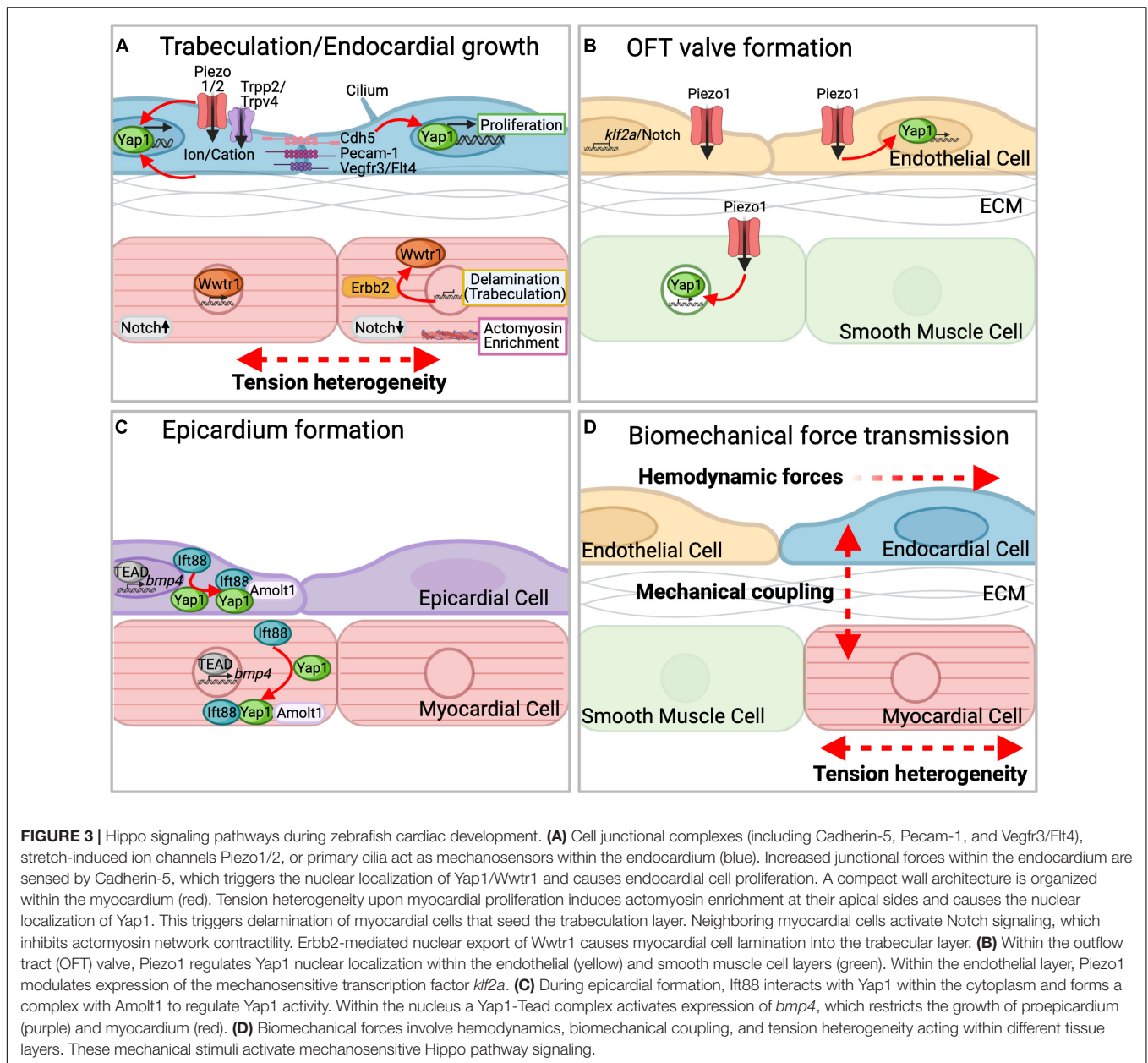
chamber dimensions [overexpression of *Wnt8a* (Dohn and Waxman, 2012) or loss of *Nkx2.5/2.7* (Targoff et al., 2008, 2013)], they detected higher junctional forces within the endocardium. This triggered nuclear localization of the Hippo pathway transcriptional regulators *Yap1/Wwtr1* and increased endocardial cell proliferation. The authors also found that the force transmission within the endocardial tissue layer required the endothelium-specific adherens junction protein *Cadherin-5* (VE-Cadherin) (Figure 3A). Upon loss of *Cadherin-5*, nuclear localization of *Yap1* and endocardial cell proliferation was reduced in models with increased cardiac chamber dimensions (Bornhorst et al., 2019). Consistent with this finding, biomechanical forces due to blood flow also trigger the *Yap1*-dependent maturation and proliferation of hematopoietic stem and progenitor cells in zebrafish (Lundin et al., 2020).

While this work suggests some mode of intra-organ communication by which myocardial expansion is transmitted to the endocardium, the precise mechanism of that crosstalk has largely remained unexplored. Endocardium and myocardium are connected by extracellular matrix (cardiac jelly), which may propagate mechanical tension between these tissues [reviewed in Haack and Abdelilah-Seyfried (2016), Monte-Nieto et al. (2020), Derrick and Noël (2021)] and trigger increased junctional forces within the endocardium. This may explain why the expansion of myocardial chamber dimensions results in Hippo pathway-dependent proliferation within the endocardium. Another equally interesting question is, how *Cadherin-5* transmits tensile forces from endocardial cell junctions toward the nucleus. The molecular cascade may include cytoskeletal components or mechanosensitive linker proteins, such as *Vinculin*, or a

connected nuclear pore that allows *Yap1* to enter the nucleus (Barry et al., 2015; Elosegui-Artola et al., 2017). Further experimental evidence will lead to additional insights into the molecular components involved in mediating tensile force-triggered proliferation within the zebrafish endocardium and the potential modes of mechanical coupling between myocardium and endocardium.

THE MECHANOSENSITIVE PIEZO1 CHANNEL AND YAP1 SIGNALING MODULATE OUTFLOW TRACT VALVULOGENESIS

Mechanical forces caused by blood flow play a major role in the morphogenesis of cardiac valves. A recent study by Duchemin et al. (2019a) described outflow tract (OFT) valve formation in zebrafish and characterized mechanosensitive pathways including signaling by the Hippo effector *Yap1* during this process (Figure 3B). Characterization of OFT morphogenesis is of particular biomedical interest since bicuspid aortic valve disease is the most common congenital heart defect (Hoffman and Kaplan, 2002). Similar to the morphogenesis of atrioventricular valves, a comparatively well-characterized process [reviewed in Steed et al. (2016a), Paolini and Abdelilah-Seyfried (2018)], the formation of OFT valves is highly sensitive to blood flow. The authors discovered that mechanosensing by the mechanically gated and endothelially expressed transient potential (*Trpp*)2 and *Trpv4* channels (Köttgen et al., 2008) and the Piezo-type mechanosensitive ion channel component



(Piezo1) (Coste et al., 2010; Li et al., 2014; Volkers et al., 2014) caused a delayed morphogenesis of OFT valves. *Trpp2* and *Trpv4* play similar roles during the formation of zebrafish atrioventricular valves (Heckel et al., 2015). In the OFT region, blood flow affected the expression of the flow-sensitive *Klf2a* (Vermot et al., 2009; Heckel et al., 2015; Steed et al., 2016b) and Notch (Samsa et al., 2015; Fontana et al., 2020) signaling pathways, which were strongly active in regions of highest shear stress. Yap1 was expressed in both, endothelial and smooth muscle cells surrounding the OFT. In *piezo1* or *trpp2* mutants, *Klf2a* reporter expression became activated in anterior and posterior regions of the valve endothelium, suggesting these channels inhibit *klf2a* expression in that tissue. Piezo1 also impacted the nuclear localization of Yap1 within the neighboring

vascular smooth muscle cell layer. Since *klf2a* mutants have normal Yap1 localization and expression, this effect may be attributed directly to Piezo1, which is expressed at low levels also within the smooth muscle cell layer. Hence, Piezo1 apparently has two roles during OFT valve formation by regulating *klf2a* expression within the endothelium, and Yap1 localization during smooth muscle cell maturation. This is yet another example for the complexity of Hippo pathway activity within the multi-tissue comprising heart. These findings add Piezo1 to the repertoire of mechanosensitive modulators of Hippo signaling during cardiac valve formation in zebrafish (Duchemin et al., 2019a). However, the precise molecular mechanisms of that crosstalk are currently unknown and remain an exciting topic for future investigations.

HETEROGENEITIES IN MYOCARDIAL CELLULAR TENSION AND HIPPO SIGNALING FROM THE TRABECULATION LAYER AND COMPACT WALL OF THE ZEBRAFISH EMBRYONIC HEART

Myocardial cells undergo several morphological changes during zebrafish cardiac wall maturation of the ventricular chamber. These involve cardiac trabeculation, a process of myocardial cell delamination from the chamber wall and their extension into the ventricular lumen where they form a network of interconnected trabecular ridges (Sedmera et al., 2000; Moormann and Christoffels, 2003; Peshkovsky et al., 2011; Staudt et al., 2014). Lai et al. (2018) investigated the role of the Hippo effector and transcriptional co-activator *Wwtr1* in myocardial cell delamination (Figure 3A). They found *Wwtr1* localizes mainly to myocardial cell nuclei of the compact wall rather than trabecular layer and its loss causes defective trabeculation. In mosaic studies, *wwtr1* mutant myocardial cells more frequently populated the trabecular layer compared with wild-type cells. These results suggested *Wwtr1* is required within compact layer myocardial cells. Further investigations revealed that a loss of *Wwtr1* impacted the organization of cortical actin networks and cell-cell junctions. Blood flow and cardiac contractility serve as potential upstream regulators of *Wwtr1* localization. Evidence for this hypothesis stems from the finding that a loss of blood flow due to the knock-down of Troponin T type 2a causes increased nuclear *Wwtr1* localization. Hence, biomechanical cues may influence the Hippo signaling pathway component *Wwtr1*, which changes the organization of cortical actin networks or cell-cell junctions. Strikingly, signaling by Neuregulin/Erbb2, another important regulator of trabeculation, caused the nuclear export of *Wwtr1* in myocardial cells. These findings suggested Neuregulin/Erbb2-mediated nuclear export of *Wwtr1* may drive myocardial cells into the trabecular layer (Lai et al., 2018). How this signaling axis impacts myocardial cell contractility during trabeculation remained an unanswered question.

A recent study by Priya et al. (2020) directly addressed this question and identified heterogeneous levels of tension within the myocardial layer as a critical factor in trabeculation (Figure 3A). The authors found that proliferation and crowding among myocardial cells led to heterogeneous tissue tension throughout the compact layer of the myocardium. This triggered myocardial cells to delaminate and seed the trabecular layer. Delaminating myocardial cells displayed an enriched actomyosin network on their apical side and cortical tension was higher in these cells compared to the non-delamination myocardial cells. Using two experimental setups, they found an increased proliferation of myocardial cells (after treatment with a Vitamin D analog) caused increased myocardial cell density, sufficient to promote delamination, and decrease of myocardial cell proliferation (after treatment with Erbb2/MEK inhibitors) abrogated delamination. Similarly, when the actomyosin contractile machinery was impaired, myocardial cells remained in the compact layer while stimulation of myocardial cell contractility triggered myocardial cell delamination. Hence,

differences in the tensile states of myocardial cells trigger the delamination process. Loss of Neuregulin/Erbb2 signaling abolished myocardial cell delamination, which was rescued by overexpressing constitutively active myosin regulatory light chain 9 (*Myl9*). The overexpression of constitutively active *Myl9* also enabled myocardial cells to delaminate in the absence of blood flow and cardiac contractility. Hence, differences in cellular actomyosin contractility provide an essential trigger for myocardial cell delamination in the absence of either Neuregulin/Erbb2 signaling or blood flow. The study also addressed what limits myocardial cells in their ability to delaminate from the compact layer. Those myocardial cells adjacent to delaminating neighbors activated Notch signaling and inhibited actomyosin network contractility. This reduced the number of delaminating cells and allowed the compact layer to maintain its architecture (Priya et al., 2020). This study elucidated how biomechanical forces direct myocardial cell fate decisions within the trabecular layer and demonstrated the ability for robust self-organization of the myocardium based on a combination of intrinsic and extrinsic biomechanical cues. How Erbb2 signaling interacts with the actomyosin cytoskeleton and regulates *Wwtr1* localization requires further investigation.

HIPPO SIGNALING RESTRICTS EPICARDIAL AND MYOCARDIAL GROWTH BY CONTROLLING PROTEINS INVOLVED IN CILIOGENESIS

The epicardial layer surrounding the heart has significant roles in cardiac development [(Moore et al., 1999; Wu et al., 2013) and reviewed in Limana et al. (2011)] and regeneration [(Kikuchi et al., 2011; González-Rosa et al., 2012) and reviewed in Limana et al. (2011)]. During zebrafish development, this tissue derives from the proepicardium, a group of cells that arises from two cell clusters that are close to the atrioventricular canal and inflow tract of the heart. After their release into the pericardial cavity, fluid flows caused by the heartbeat move these cell clusters within the pericardial cavity until they attach to and seed on the myocardial layer (Peralta et al., 2013). This process requires BMP and Notch activities (Andrés-Delgado et al., 2019, 2020). A recent study by Peralta et al. (2020) addressed the role of Hippo signaling in proepicardial growth. They discovered that several intraflagellar transport (IFT) complex B proteins, essential for cilia function and transport of cilia components, control epicardial cell numbers via modulating the Hippo signaling pathway (Figure 3C). The *ift88* and *elipsa/ift54* mutants had increased epicardial and atrial myocardial cell numbers. This process was independent of their cilia functions, because another well-characterized cilia mutant (*iguana*), lacking all primary cilia, had reduced epicardial cell numbers. The authors discovered that a loss of *Ift88* causes increased proepicardial *bmp4* expression and Hippo signaling. In an elegant pharmacological suppression study, the authors found that blocking the interaction between Yap1 and Tead (using the drug Verteporfin) (Liu-Chittenden et al., 2012), suppressed the increases in BMP activity in *ift88* mutant embryos. These findings suggested that IFT

proteins require Yap1 activity to modulate BMP signaling in the proepicardium and myocardium. This activity restricts proepicardial and secondary heart field-derived atrial myocardial growth. Other ciliary proteins of the Nephrocystin family regulate YAP1/WWTR1 (TAZ) activity in human fibroblast, rat, and mouse cell lines (Habbig et al., 2012; Frank et al., 2013; Grampa et al., 2016). Further, the Hippo kinases MST1/2-SAV1 promote ciliogenesis in 293T cells and depletion of Mst1/2-Sav1 resulted in ciliopathy phenotypes in zebrafish (Kim et al., 2014). Given that dysfunctional cilia cause cardiac defects [reviewed in Klena et al. (2017)], elucidating the connection between ciliary proteins and the biomechanical Hippo signaling pathway in cardiac development and regeneration is a promising field for future research.

DISCUSSION

Recent studies have significantly expanded our understanding of mechanosensitive Hippo signaling during zebrafish cardiac development. Currently, a complex picture has emerged of cell-intrinsic and -extrinsic cues that modulate this biomechanical signaling pathway. Likewise, our knowledge of the repertoire of developmental roles of the Hippo effectors Yap1/Wwtr1 and their crosstalk with other pathways is steadily increasing. Biomechanical forces that can impact Hippo signaling include hemodynamics, cell stretching, cellular crowding/tension, junctional forces, mechanical coupling, and actomyosin cytoskeletal rearrangements (Figure 3D). Upon mechanical stimulation, mechanosensation and force transmission toward Hippo signaling proteins involves the cell junctional protein Cadherin-5 (Bornhorst et al., 2019) and the cation ion channels Piezo1/2 (Duchemin et al., 2019a). This causes changes in gene expression profiles involving the Hippo signaling pathway. Precisely how biomechanical signaling activates the Hippo pathway in the context of zebrafish cardiac development is largely unknown.

Studies in the developing zebrafish heart revealed that Hippo signaling in one tissue layer can be affected by the development of other cardiac tissues. Such a form of intra-organ communication between myocardium and endocardium was observed when an expansion of myocardial atrial chamber dimensions triggered increased endocardial cell proliferation (Bornhorst et al., 2019). Increased cardiac chamber dimensions generated junctional tensile forces within the endocardium. This was sensed and transmitted into endocardial cells by Cadherin-5, driving nuclear localization of Yap1 and initiating endocardial cell proliferation (Bornhorst et al., 2019). Further, Flinn and colleagues found that Yap1 has a role in scar tissue formation, which is comprised of multiple cell types including fibroblasts, epicardial cells, and macrophages, during zebrafish cardiac regeneration. Yap1 regulates factors that mediate extracellular matrix deposition and macrophage activity (Flinn et al., 2019). However, they did not observe any effect on cardiomyocyte regeneration. We still lack a complete overview of molecular pathways involved in connecting the different tissue layers, cell types, and whether biomechanically active extracellular matrix components are part of this Hippo pathway-dependent intra-organ communication.

The AVC and OFT valves are composed of specialized endothelial/endocardial cell types, each with different cellular responses in the context of biomechanical Hippo signaling. Within OFT endothelial cells, Piezo1/2 channels control Notch and *klf2a* activities and affect Yap1 activation (Duchemin et al., 2019a). Whether this signaling pathway is also relevant for AVC endocardial cells needs to be resolved. The depletion of the polarity protein Lethal (2) giant larvae affected Yap1 activity in cardiomyocytes and reduced their cell numbers. This caused an enlargement of cardiomyocytes and severe cardiac deficits including atrioventricular valvulogenesis defects (Flinn et al., 2020). However, these valvular deficits may be an indirect consequence caused by altered blood flow patterns in these mutants. Also, potential differences in cell identities between OFT and AVC valve cells have largely remained unexplored. Systematically comparing these different valvular cell types and their biomechanical signaling will help to better understand how cardiac valve leaflets are being shaped in response to biomechanical forces. Likewise, it is unknown whether Yap1 is regulated by blood flow in zebrafish endocardial cells in a manner similar to the regulation of Yap1 in zebrafish vascular (Nakajima et al., 2017) or OFT endothelial cells (Duchemin et al., 2019a). Currently, we can only speculate that the diversity of endothelial and endocardial cell types also relates to their sensitivity to blood flow and that differences in the activation of biomechanical signaling pathways causes distinct cell fates and behaviors.

Multiple studies indicated blood flow as a key player during trabeculation and myocardial wall maturation (Chi et al., 2008; Peshkovsky et al., 2011; Staudt et al., 2014; Jiménez-Amilburu et al., 2016; Lai et al., 2018; Priya et al., 2020). In the absence of blood flow, myocardial wall maturation and trabeculation were disrupted and Wwtr1 nuclear localization increased within myocardial cells of the compact wall (Lai et al., 2018). It is not well understood by which mechanisms the myocardium is able to sense blood flow and what mode of intra-organ-communication takes place to transduce blood flow-dependent physical forces between endocardium and myocardium. In particular, the role of the endocardium in that mechanosensitive signal transduction process is unknown.

It is very likely that Hippo pathway signaling is also regulated by biomechanical stimuli during cardiac development of higher vertebrates. The pioneering studies in zebrafish have been facilitated by the ease with which blood flow and cardiac contractions can be modulated in that model organism. It will be an exciting but far more challenging approach to elucidate whether Hippo pathway-dependent cellular and molecular biomechanical processes play roles during the development or physiology of the mammalian four-chambered heart. For instance, recent evidence suggests that changes to cardiomyocyte cytoskeleton, cell junctions, and extracellular matrix composition impact YAP nuclear localization and heart regenerative capacity in mice (Aharonov et al., 2020). Overall, a more profound insight into mechanosensitive Hippo signaling pathways during the development of different cardiac tissues will be critical for understanding heart function under physiological and disease-related conditions.

AUTHOR CONTRIBUTIONS

DB designed the figures and wrote the first draft. DB and SA-S revised, wrote, and edited the final manuscript. Both authors contributed to the article and approved the submitted version.

FUNDING

DB was supported by the German National Academy of Sciences Leopoldina project LPDS 2021-01. SA-S was supported by the

REFERENCES

- Aharonov, A., Shakked, A., Umansky, K. B., Savidor, A., Genzelinakh, A., Kain, D., et al. (2020). ERBB2 drives YAP activation and EMT-like processes during cardiac regeneration. *Nat. Cell Biol.* 22, 1346–1356. doi: 10.1038/s41556-020-00588-4
- Alexander, J., Rothenberg, M., Henry, G. L., and Stainier, D. Y. R. (1999). casonova plays an early and essential role in endoderm formation in zebrafish. *Dev. Biol.* 215, 343–357. doi: 10.1006/dbio.1999.9441
- Andrés-Delgado, L., Ernst, A., Galardi-Castilla, M., Bazaga, D., Peralta, M., Münch, J., et al. (2019). Actin dynamics and the Bmp pathway drive apical extrusion of proepicardial cells. *Development* 146:dev174961. doi: 10.1242/dev.174961
- Andrés-Delgado, L., Galardi-Castilla, M., Münch, J., Peralta, M., Ernst, A., González-Rosa, J. M., et al. (2020). Notch and Bmp signaling pathways act coordinately during the formation of the proepicardium. *Dev. Dyn.* 249, 1455–1469. doi: 10.1002/dvdy.229
- Aragona, M., Panciera, T., Manfrin, A., Giullitti, S., Michielin, F., Elvassore, N., et al. (2013). A mechanical checkpoint controls multicellular growth through YAP/TAZ regulation by actin-processing factors. *Cell* 154, 1047–1059. doi: 10.1016/j.cell.2013.07.042
- Auman, H. J., Coleman, H., Riley, H. E., Olale, F., Tsai, H. J., and Yelon, D. (2007). Functional modulation of cardiac form through regionally confined cell shape changes. *PLoS Biol.* 5:e53. doi: 10.1371/journal.pbio.0050053
- Barry, A. K., Wang, N., and Leckband, D. E. (2015). Local VE-cadherin mechanotransduction triggers long-ranged remodeling of endothelial monolayers. *J. Cell Sci.* 128, 1341–1351. doi: 10.1242/jcs.159954
- Behrndt, M., Salbreux, G., Campinho, P., Hauschild, R., Oswald, F., Roensch, J., et al. (2012). Forces driving epithelial spreading in zebrafish gastrulation. *Science* 338, 257–260. doi: 10.1126/science.1224143
- Bornhorst, D., Xia, P., Nakajima, H., Dingare, C., Herzog, W., Lecaudey, V., et al. (2019). Biomechanical signaling within the developing zebrafish heart attunes endocardial growth to myocardial chamber dimensions. *Nat. Commun.* 10:4113. doi: 10.1038/s41467-019-12068-x
- Chi, N. C., Shaw, R. M., Jungblut, B., Huisken, J., Ferrer, T., Arnaout, R., et al. (2008). Genetic and physiologic dissection of the vertebrate cardiac conduction system. *PLoS Biol.* 6:e109. doi: 10.1371/journal.pbio.0060109
- Coste, B., Mathur, J., Schmidt, M., Earley, T. J., Ranade, S., Petrus, M. J., et al. (2010). Piezo1 and Piezo2 are essential components of distinct mechanically-activated cation channels. *Science* 330, 55–60. doi: 10.1126/science.1193270
- de Pater, E., Clijsters, L., Marques, S. R., Lin, Y. F., Garavito-Aguilar, Z. V., Yelon, D., et al. (2009). Distinct phases of cardiomyocyte differentiation regulate growth of the zebrafish heart. *Development* 136, 1633–1641. doi: 10.1242/dev.030924
- Derrick, C. J., and Noël, E. S. (2021). The ECM as a driver of heart development and repair. *Development* 148:dev191320. doi: 10.1242/dev.191320
- Dietrich, A.-C., Lombardo, V. A., and Abdelilah-Seyfried, S. (2015). Blood flow and Bmp signaling control endocardial chamber morphogenesis. *Dev. Cell* 30, 367–377. doi: 10.1016/j.devcel.2014.06.020
- Dohn, T. E., and Waxman, J. S. (2012). Distinct phases of Wnt/ β -catenin signaling direct cardiomyocyte formation in zebrafish. *Dev. Biol.* 23, 364–376. doi: 10.1016/j.ydbio.2011.10.032
- Duchemin, A. L., Vignes, H., and Vermot, J. (2019a). Mechanically activated piezo channels control outflow tract valve development through Yap1 and Klf2-Notch signaling axis. *Elife* 8:529016. doi: 10.1101/529016
- Duchemin, A. L., Vignes, H., Vermot, J., and Chow, R. (2019b). Mechanotransduction in cardiovascular morphogenesis and tissue engineering. *Curr. Opin. Genet. Dev.* 57, 106–116. doi: 10.1016/j.gde.2019.08.002
- Dupont, S., Morsut, L., Aragona, M., Enzo, E., Giullitti, S., Cordenonsi, M., et al. (2011). Role of YAP/TAZ in mechanotransduction. *Nature* 474, 179–184. doi: 10.1038/nature10137
- Elosegui-Artola, A., Andreu, I., Beedle, A. E. M., Lezamiz, A., Uroz, M., Kosmalska, A. J., et al. (2017). Force triggers YAP nuclear entry by regulating transport across nuclear pores. *Cell* 171, 1397–1410.e14.
- Flinn, M. A., Jeffery, B. E., O'Meara, C. C., and Link, B. A. (2019). Yap is required for scar formation but not myocyte proliferation during heart regeneration in zebrafish. *Cardiovasc. Res.* 115, 570–577. doi: 10.1093/cvr/cvy243
- Flinn, M. A., Otten, C., Brandt, Z. J., Bostrom, J. R., Kenarsary, A., Wan, T. C., et al. (2020). Lgl1 regulates zebrafish cardiac development by mediating Yap stability in cardiomyocytes. *Development* 147, 1–12. doi: 10.1242/dev.193581
- Fontana, F., Haack, T., Reichenbach, M., Knaus, P., Puceat, M., and Abdelilah-Seyfried, S. (2020). Antagonistic activities of Vegfr3/Flt4 and Notch1b fine-tune mechanosensitive signaling during zebrafish cardiac valvulogenesis. *Cell Rep.* 32:107883. doi: 10.1016/j.celrep.2020.107883
- Frank, V., Habbig, S., Bartram, M. P., Eisenberger, T., Veenstra-Knol, H. E., Decker, C., et al. (2013). Mutations in NEK8 link multiple organ dysplasia with altered Hippo signalling and increased c-MYC expression. *Hum. Mol. Genet.* 22, 2177–2185. doi: 10.1093/hmg/ddt070
- Fukui, H., Miyazaki, T., Chow, R. W. Y., Ishikawa, H., Nakajima, H., Vermot, J., et al. (2018). Hippo signaling determines the number of venous pole cells that originate from the anterior lateral plate mesoderm in zebrafish. *Elife* 7:e29106. doi: 10.7554/eLife.29106
- Fukui, H., Terai, K., Nakajima, H., Chiba, A., Fukuhara, S., and Mochizuki, N. (2014). S1P-Yap1 signaling regulates endoderm formation required for cardiac precursor cell migration in zebrafish. *Dev. Cell* 31, 128–136. doi: 10.1016/j.devcel.2014.08.014
- Garavito-Aguilar, Z. V., Riley, H. E., and Yelon, D. (2010). Hand2 ensures an appropriate environment for cardiac fusion by limiting fibronectin function. *Development* 137, 3215–3220. doi: 10.1242/dev.052225
- George, E. L., Baldwin, H. S., and Hynes, R. O. (1997). Fibronectins are essential for heart and blood vessel morphogenesis but are dispensable for initial specification of precursor cells. *Blood* 90, 3073–3081. doi: 10.1182/blood.v90.8.3073
- González-Rosa, J. M., Peralta, M., and Mercader, N. (2012). Pan-epicardial lineage tracing reveals that epicardium derived cells give rise to myofibroblasts and perivascular cells during zebrafish heart regeneration. *Dev. Biol.* 370, 173–186. doi: 10.1016/j.ydbio.2012.07.007
- Grampa, V., Delous, M., Zaidan, M., Ody, G., Thomas, S., Elkhartoufi, N., et al. (2016). Novel NEK8 mutations cause severe syndromic renal cystic dysplasia through YAP dysregulation. *PLoS Genet.* 12:e1005894. doi: 10.1371/journal.pgen.1005894
- Gunawan, F., Priya, R., and Stainier, D. Y. R. (2021). Sculpting the heart: cellular mechanisms shaping valves and trabeculae. *Curr. Opin. Cell Biol.* 73, 26–34. doi: 10.1016/j.ccb.2021.04.009

ACKNOWLEDGMENTS

We are thankful to members of the SA-S laboratory for comments on the manuscript. Figures were created with BioRender.com under an academic license. We apologize to those whose work has not been cited owing to length constraints.

- Haack, T., and Abdelilah-Seyfried, S. (2016). The force within: endocardial development, mechanotransduction and signalling during cardiac morphogenesis. *Development* 143, 373–386. doi: 10.1242/dev.131425
- Habbig, S., Bartram, M. P., Sägmüller, J. G., Griessmann, A., Franke, M., Müller, R. U., et al. (2012). The ciliopathy disease protein NPHP9 promotes nuclear delivery and activation of the oncogenic transcriptional regulator TAZ. *Hum. Mol. Genet.* 21, 5528–5538. doi: 10.1093/hmg/dds408
- Hami, D., Grimes, A. C., Tsai, H. J., and Kirby, M. L. (2011). Zebrafish cardiac development requires a conserved secondary heart field. *Development* 138, 2389–2398. doi: 10.1242/dev.061473
- Heallen, T., Zhang, M., Wang, J., Bonilla-claudio, M., Klysiak, E., Randy, L., et al. (2011). Hippo pathway inhibits wnt signalling to restrain CM proliferation and heart size. *Science* 332, 458–461. doi: 10.1126/science.1199010
- Heckel, E., Boselli, F., Roth, S., Krudewig, A., Belting, H. G., Charvin, G., et al. (2015). Oscillatory flow modulates mechanosensitive *klf2a* expression through *trpv4* and *trpp2* during heart valve development. *Curr. Biol.* 25, 1354–1361. doi: 10.1016/j.cub.2015.03.038
- Hergovich, A., Schmitz, D., and Hemmings, B. A. (2006). The human tumour suppressor LATS1 is activated by human MOB1 at the membrane. *Biochem. Biophys. Res. Commun.* 345, 50–58. doi: 10.1016/j.bbrc.2006.03.244
- Hoffman, J. I. E., and Kaplan, S. (2002). The incidence of congenital heart disease. *J. Am. Coll. Cardiol.* 39, 1890–1900. doi: 10.1016/S0735-1097(02)01886-7
- Jiménez-Amilburu, V., Rasouli, S. J., Staudt, D. W., Nakajima, H., Chiba, A., Mochizuki, N., et al. (2016). In vivo visualization of cardiomyocyte apicobasal polarity reveals epithelial to mesenchymal-like transition during cardiac trabeculation. *Cell Rep.* 17, 2687–2699. doi: 10.1016/j.celrep.2016.11.023
- Justice, R. W., Zilian, O., Woods, D. F., Noll, M., and Bryant, P. J. (1995). The Drosophila tumor suppressor gene *warts* encodes a homolog of human myotonic dystrophy kinase and is required for the control of cell shape and proliferation. *Genes Dev.* 9, 534–546. doi: 10.1101/gad.9.5.534
- Kikuchi, K., Holdway, J. E., Major, R. J., Blum, N., Dahn, R. D., Begemann, G., et al. (2011). Retinoic acid production by endocardium and epicardium is an injury response essential for zebrafish heart regeneration. *Dev. Cell* 20, 397–404. doi: 10.1016/j.devcel.2011.01.010
- Kim, M., Kim, M., Lee, M. S., Kim, C. H., and Lim, D. S. (2014). The MST1/2-SAV1 complex of the Hippo pathway promotes ciliogenesis. *Nat. Commun.* 5:5370. doi: 10.1038/ncomms6370
- Klena, N. T., Gibbs, B. C., and Lo, C. W. (2017). Cilia and ciliopathies in congenital heart disease. *Cold Spring Harb. Perspect. Biol.* 9:a028266. doi: 10.1101/cshperspect.a028266
- Köttgen, M., Buchholz, B., Garcia-Gonzalez, M. A., Kotsis, F., Fu, X., Doerken, M., et al. (2008). TRPP2 and TRPV4 form a polymodal sensory channel complex. *J. Cell Biol.* 182, 437–447. doi: 10.1083/jcb.200805124
- Kupperman, E., An, S., Osborne, N., Waldron, S., and Stainier, D. Y. R. (2000). A sphingosine-1-phosphate receptor regulates cell migration during vertebrate heart development. *Nature* 406, 192–195. doi: 10.1038/35018092
- Lai, J. K. H., Collins, M. M., Uribe, V., Jiménez-Amilburu, V., Günther, S., Maischein, H. M., et al. (2018). The Hippo pathway effector *Wwtr1* regulates cardiac wall maturation in zebrafish. *Development* 145:dev159210. doi: 10.1242/dev.159210
- Lazic, S., and Scott, I. C. (2011). *Mef2cb* regulates late myocardial cell addition from a second heart field-like population of progenitors in zebrafish. *Dev. Biol.* 354, 123–133. doi: 10.1016/j.ydbio.2011.03.028
- Li, J., Hou, B., Tumova, S., Muraki, K., Bruns, A., Ludlow, M. J., et al. (2014). Piezo1 integration of vascular architecture with physiological force. *Nature* 515, 279–282. doi: 10.1038/nature13701
- Limana, F., Capogrossi, M. C., and Germani, A. (2011). The epicardium in cardiac repair: from the stem cell view. *Pharmacol. Ther.* 129, 82–96. doi: 10.1016/j.pharmthera.2010.09.002
- Liu, C. Y., Zha, Z. Y., Zhou, X., Zhang, H., Huang, W., Zhao, D., et al. (2010). The hippo tumor pathway promotes TAZ degradation by phosphorylating a phosphodegron and recruiting the SCF^β-TrCPE3 ligase. *J. Biol. Chem.* 285, 37159–37169. doi: 10.1074/jbc.M110.152942
- Liu-Chittenden, Y., Huang, B., Shim, J. S., Chen, Q., Lee, S. J., Anders, R. A., et al. (2012). Genetic and pharmacological disruption of the TEAD-YAP complex suppresses the oncogenic activity of YAP. *Genes Dev.* 26, 1300–1305. doi: 10.1101/gad.192856.112
- Low, B. C., Pan, C. Q., Shivashankar, G. V., Bershadsky, A., Sudol, M., and Sheetz, M. (2014). YAP/TAZ as mechanosensors and mechanotransducers in regulating organ size and tumor growth. *FEBS Lett.* 588, 2663–2670. doi: 10.1016/j.febslet.2014.04.012
- Lundin, V., Sugden, W. W., Theodore, L. N., Sousa, P. M., Han, A., Chou, S., et al. (2020). YAP Regulates hematopoietic stem cell formation in response to the biomechanical forces of blood flow. *Dev. Cell* 52, 44–460.e5.
- Ma, S., Meng, Z., Chen, R., and Guan, K. L. (2019). The hippo pathway: biology and pathophysiology. *Ann. Rev. Biochem.* 88, 577–604. doi: 10.1146/annurev-biochem-013118-111829
- Martin, E., Girardello, R., Dittmar, G., and Ludwig, A. (2021). New insights into the organization and regulation of the apical polarity network in mammalian epithelial cells. *FEBS J.* 95, 1–23. doi: 10.1111/febs.15710
- Meng, Z., Morioishi, T., and Guan, K. L. (2016). Mechanisms of hippo pathway regulation. *Genes Dev.* 30, 1–17. doi: 10.1101/gad.274027.115
- Mia, M. M., and Singh, M. K. (2019). The hippo signaling pathway in cardiac development and diseases. *Front. Cell Dev. Biol.* 7:211. doi: 10.3389/fcell.2019.00211
- Miesfeld, J. B., and Link, B. A. (2014). Establishment of transgenic lines to monitor and manipulate Yap/Taz-Tead activity in zebrafish reveals both evolutionarily conserved and divergent functions of the Hippo pathway. *Mech. Dev.* 133, 177–188. doi: 10.1016/j.mod.2014.02.003
- Monte-Nieto, G., del Fischer, J. W., Gorski, D. J., Harvey, R. P., and Kovacic, J. C. (2020). Basic biology of extracellular matrix in the cardiovascular system. *J. Am. Coll. Cardiol.* 75, 2169–2188. doi: 10.1016/j.jacc.2020.03.024
- Moore, A. W., McInnes, L., Kreidberg, J., Hastie, N. D., and Schedl, A. (1999). YAC complementation shows a requirement for *Wt1* in the development of epicardium, adrenal gland and throughout nephrogenesis. *Development* 126, 1845–1857. doi: 10.1242/dev.126.9.1845
- Moormann, A. F. M., and Christoffels, V. M. (2003). Cardiac chamber formation: development, genes, and evolution. *Physiol. Rev.* 83, 1223–1267. doi: 10.1152/physrev.00006.2003
- Nakajima, H., Yamamoto, K., Agarwala, S., Terai, K., Fukui, H., Fukuhara, S., et al. (2017). Flow-dependent endothelial YAP regulation contributes to vessel maintenance. *Dev. Cell* 40, 523–536.e6.
- Neto, F., Klaus-Bergmann, A., Ong, Y. T., Alt, S., Vion, A. C., Szymborska, A., et al. (2018). YAP and TAZ regulate adherens junction dynamics and endothelial cell distribution during vascular development. *Elife* 7:e31037. doi: 10.7554/eLife.31037
- Oka, T., Remue, E., Meerschaert, K., Vanloo, B., Boucherie, C., Gfeller, D., et al. (2010). Functional complexes between YAP2 and ZO-2 are PDZ domain-dependent, and regulate YAP2 nuclear localization and signalling. *Biochem. J.* 432, 461–478. doi: 10.1042/BJ20100870
- Oka, T., Schmitt, A. P., and Sudol, M. (2012). Opposing roles of angiomin-like-1 and zona occludens-2 on pro-apoptotic function of YAP. *Oncogene* 31, 128–134. doi: 10.1038/onc.2011.216
- Osborne, N., Brand-Arzamendi, K., Ober, E. A., Jin, S.-W., Verkade, H., Holtzman, N. G., et al. (2008). The spinster homologue, Two of Hearts, is required for sphingosine 1-phosphate signaling in zebrafish. *Curr. Biol.* 23, 1882–1888. doi: 10.1016/j.cub.2008.10.061
- Paolini, A., and Abdelilah-Seyfried, S. (2018). The mechanobiology of zebrafish cardiac valve leaflet formation. *Curr. Opin. Cell Biol.* 55, 52–58. doi: 10.1016/j.cob.2018.05.007
- Peralta, M., Ortiz Lopez, L., Jerabkova, K., Lucchesi, T., Vitre, B., Han, D., et al. (2020). Intraflagellar transport complex B proteins regulate the hippo effector Yap1 during cardiogenesis. *Cell Rep.* 32:107932. doi: 10.1016/j.celrep.2020.107932
- Peralta, M., Steed, E., Harlepp, S., González-Rosa, J. M., Monduc, F., Ariza-Cosano, A., et al. (2013). Heartbeat-driven pericardial fluid forces contribute to epicardium morphogenesis. *Curr. Biol.* 23, 1726–1735. doi: 10.1016/j.cub.2013.07.005
- Peshkovsky, C., Totong, R., and Yelon, D. (2011). Dependence of cardiac trabeculation on neuregulin signaling and blood flow in zebrafish. *Dev. Dyn.* 240, 446–456. doi: 10.1002/dvdy.22526
- Priya, R., Allanki, S., Gentile, A., Mansingh, S., Uribe, V., Maischein, H.-M., et al. (2020). Tension heterogeneity directs form and fate to pattern the myocardial wall. *Nature* 588, 130–134. doi: 10.1038/s41586-020-2946-9

- Reiter, J. F., Alexander, J., Rodaway, A., Yelon, D., Patient, R., Holder, N., et al. (1999). Gata5 is required for the development of the heart and endoderm in zebrafish. *Genes Dev.* 13, 2983–2995. doi: 10.1101/gad.13.22.2983
- Samsa, L. A., Givens, C., Tzima, E., Stainier, D. Y. R., Qian, L., and Liu, J. (2015). Cardiac contraction activates endocardial notch signaling to modulate chamber maturation in zebrafish. *Development* 142, 4080–4091. doi: 10.1242/dev.125724
- Schier, A. F., Neuhauss, S. C. F., Helde, K. A., Talbot, W. S., and Driever, W. (1997). The one-eyed pinhead gene functions in mesoderm and endoderm formation in zebrafish and interacts with no tail. *Development* 124, 327–342. doi: 10.1242/dev.124.2.327
- Sedmera, D., Pexieder, T., Vuillemin, M., Thompson, R. P., and Anderson, R. H. (2000). Developmental patterning of the myocardium. *Anat. Rec.* 258, 319–337. doi: 10.1002/(SICI)1097-0185(20000401)258:4<319::AID-AR1<3.0.CO;2-O
- Sehnert, A. J., Huq, A., Weinstein, B. M., Walker, C., Fishman, M., and Stainier, D. Y. R. (2002). Cardiac troponin T is essential in sarcomere assembly and cardiac contractility. *Nat. Genet.* 31, 106–110. doi: 10.1038/ng875
- Serluca, F. C. (2008). Development of the proepicardial organ in the zebrafish. *Dev. Biol.* 315, 18–27. doi: 10.1016/j.ydbio.2007.10.007
- Singh, A., Ramesh, S., Cibi, D. M., Yun, L. S., Li, J., Li, L., et al. (2016). Hippo signaling mediators Yap and Taz Are required in the epicardium for coronary vasculature development. *Cell Rep.* 15, 1384–1393. doi: 10.1016/j.celrep.2016.04.027
- Staudt, D., and Stainier, D. (2012). Uncovering the molecular and cellular mechanisms of heart development using the zebrafish. *Annu. Rev. Genet.* 46, 397–418. doi: 10.1146/annurev-genet-110711-155646
- Staudt, D. W., Liu, J., Thorn, K. S., Stuurman, N., Liebling, M., and Stainier, D. Y. R. (2014). High-resolution imaging of cardiomyocyte behavior reveals two distinct steps in ventricular trabeculation. *Development* 141, 585–593. doi: 10.1242/dev.098632
- Steed, E., Boselli, F., and Vermot, J. (2016a). Hemodynamics driven cardiac valve morphogenesis. *Biochim. Biophys. Acta Mol. Cell Res.* 1863, 1760–1766. doi: 10.1016/j.bbamcr.2015.11.014
- Steed, E., Faggianeli, N., Roth, S., Ramspacher, C., Concordet, J. P., and Vermot, J. (2016b). Klf2a couples mechanotransduction and zebrafish valve morphogenesis through fibronectin synthesis. *Nat. Commun.* 7:11646. doi: 10.1038/ncomms11646
- Targoff, K. L., Colombo, S., George, V., Schell, T., Kim, S. H., Solnica-Krezel, L., et al. (2013). Nkx genes are essential for maintenance of ventricular identity. *Development* 140, 4203–4213. doi: 10.1242/dev.095562
- Targoff, K. L., Schell, T., and Yelon, D. (2008). Nkx genes regulate heart tube extension and exert differential effects on ventricular and atrial cell number. *Dev. Biol.* 322, 314–321. doi: 10.1016/j.ydbio.2008.07.037
- Trinh, L. A., and Stainier, D. Y. R. (2004). Fibronectin regulates epithelial organization during myocardial migration in zebrafish. *Dev. Cell* 6, 371–382. doi: 10.1016/S1534-5807(04)00063-2
- Vermot, J., Forouhar, A. S., Liebling, M., Wu, D., Plummer, D., and Fraser, S. E. (2009). Reversing blood flows act through klf2a to ensure normal valvulogenesis in the developing heart. *PLoS Biol.* 7:e1000246. doi: 10.1371/journal.pbio.1000246
- Volkers, L., Mechoukhi, Y., and Coste, B. (2014). Piezo channels: from structure to function. *Pflugers Arch.* 467, 95–99. doi: 10.1007/s00424-014-1578-z
- Von Gise, A., Lin, Z., Schlegelmilch, K., Honor, L. B., Pan, G. M., Buck, J. N., et al. (2012). YAP1, the nuclear target of Hippo signaling, stimulates heart growth through cardiomyocyte proliferation but not hypertrophy. *Proc. Natl. Acad. Sci. U. S. A.* 109, 2394–2399. doi: 10.1073/pnas.1116136109
- Wu, S. P., Dong, X. R., Regan, J. N., Su, C., and Majesky, M. W. (2013). Tbx18 regulates development of the epicardium and coronary vessels. *Dev. Biol.* 383, 307–320. doi: 10.1016/j.ydbio.2013.08.019
- Xiao, Y., Leach, J., Wang, J., and Martin, J. F. (2016). Hippo/Yap signaling in cardiac development and regeneration. *Curr. Treat. Options Cardiovasc. Med.* 18, 1–9. doi: 10.1007/s11936-016-0461-y
- Xu, T., Wang, W., Zhang, S., Stewart, R. A., and Yu, W. (1995). Identifying tumor suppressors in genetic mosaics: the *Drosophila* lats gene encodes a putative protein kinase. *Development* 121, 1053–1063. doi: 10.1242/dev.121.4.1053
- Yin, F., Yu, J., Zheng, Y., Chen, Q., Zhang, N., and Pan, D. (2013). Spatial organization of hippo signaling at the plasma membrane mediated by the tumor suppressor Merlin/NF2. *Cell* 45, 788–802. doi: 10.1038/jid.2014.371
- Zhang, H., Von Gise, A., Liu, Q., Hu, T., Tian, X., He, L., et al. (2014). Yap1 is required for endothelial to mesenchymal transition of the atrioventricular cushion. *J. Biol. Chem.* 289, 18681–18692. doi: 10.1074/jbc.M114.554584
- Zhang, J., Talbot, W. S., and Schier, A. F. (1998). Positional cloning identifies zebrafish one-eyed pinhead as a permissive EGF-related ligand required during gastrulation. *Cell* 92, 241–251. doi: 10.1016/S0092-8674(00)80918-6
- Zhao, B., Li, L., Tumaneng, K., Wang, C.-Y., and Guan, K.-L. (2010). A coordinated phosphorylation by Lats and CK1 regulates YAP stability through SCF(beta-TRCP). *Genes Dev.* 24, 72–85. doi: 10.1101/gad.1843810
- Zhao, B., Wei, X., Li, W., Udan, R. S., Yang, Q., Kim, J., et al. (2007). Inactivation of YAP oncoprotein by the hippo pathway is involved in cell contact inhibition and tissue growth control. *Genes Dev.* 21, 2747–2761. doi: 10.1101/gad.1602907
- Zhao, B., Ye, X., Yu, J., Li, L., Li, W., Li, S., et al. (2008). TEAD mediates YAP-dependent gene induction and growth control. *Genes Dev.* 22, 1962–1971. doi: 10.1101/gad.1664408
- Zheng, M., Jacob, J., Hung, S. H., and Wang, J. (2020). The hippo pathway in cardiac regeneration and homeostasis: new perspectives for cell-free therapy in the injured heart. *Biomolecules* 10, 1–15. doi: 10.3390/biom10071024
- Zhou, Y., Cashman, T. J., Nevis, K. R., Obregon, P., Sara, A., Liu, Y., et al. (2011). Latent TGFβ binding protein 3 identifies a second heart field in zebrafish. *Nature* 474, 645–648. doi: 10.1038/nature10094

Conflict of Interest: The authors declare that the research was conducted in the absence of any commercial or financial relationships that could be construed as a potential conflict of interest.

Publisher's Note: All claims expressed in this article are solely those of the authors and do not necessarily represent those of their affiliated organizations, or those of the publisher, the editors and the reviewers. Any product that may be evaluated in this article, or claim that may be made by its manufacturer, is not guaranteed or endorsed by the publisher.

Copyright © 2021 Bornhorst and Abdelilah-Seyfried. This is an open-access article distributed under the terms of the Creative Commons Attribution License (CC BY). The use, distribution or reproduction in other forums is permitted, provided the original author(s) and the copyright owner(s) are credited and that the original publication in this journal is cited, in accordance with accepted academic practice. No use, distribution or reproduction is permitted which does not comply with these terms.