

Examples of primer pairs

In the figures PCR amplification products separated on agarose gels (1 x TBE, 2 % agarose, 35 minutes separation at 100 Volt) are seen. The first and last lane of each gel contain DNA size markers of 200,150,100 and 50 bp (top to bottom).

Arabidopsis thaliana (A and B)

No	Transcript	Forward primer sequence 5'-3'	Reverse primer sequence 5'-3'	Amplicon size
1	AT2G38620.1	AGAGCTCCTGAAGTTTTGCTTGGT	TTGCCTCCTAATCATCTCGGCA	96
2	AT3G54180.1	TGGTTCGGAGGCAAGCTCTTTT	TCAGTTGGTGTTCCTAGCAACCTG	85
3	AT4G37490.1	ACCAGCACTCTCAAGCATCACAC	GCCAACAGCTTTGCACAGTCCAT	68
4	AT1G09960.1	AGCATCGTGTTTGCTGCTGTGT	TGGGACGCTGTAAGTTATCGCC	72
5	AT1G19450.1	GGAGTTGGCGTTGTTTCAGGTAGT	AAGCCGACGACCTGCTTTATCC	72
6	AT1G53210.1	CCATCATCTTCGCATCCCGCAA	TGTCACTCCACCACATAGCTCG	74
7	AT2G40610.1	AGCCAGCTTTTCTTCAGATCGCT	TGGTACTCTTCGGAAAGAGACAGG	68
8	AT3G03220.1	TGCCGGTGCAAGTATCGAAGGAT	TCGACTGTAAACCGCATGCTCC	61
9	AT3G15370.1	TGATAGCCCTGCTTCACTTGGAGG	AATCCGGCGTGGTACGGATTGT	60
10	AT3G29030.1	ACTTTTGTCTCCTGGTGGTGC	CACTTCTCTTGACCGAACCCTT	138
11	AT3G55500.1	TGCCCGTTTTCTCAAGATCGC	ACTCTTCTACATGCCACCCTG	80
12	AT4G38210.1	GATAGCCACAGCCACGCTTTCT	ATACCCACAAGCGCCTCCAGTA	73

Chlamydomonas reinhardtii (C)

No	Transcript	Forward primer sequence 5'-3'	Reverse primer sequence 5'-3'	Amplicon size
1	BIS_CDKI	AGAGGTTAGCCAGGTGTCTCTAGC	GTTGCGAATGTGGATGCGCTTG	79
2	BIS_DP	GTTTCTGCCCTTCATCCTGGTG	TCTGGAACGGCGAGTAGAAGTC	116
3	Chlre2_kg.scaffold_21000008	AAATCGTGCGCTCGGAAATCCAC	CATGAGACCCGTCAAGTCGAAGTC	95
4	Chlre2_kg.scaffold_4000140	AACCACCTCCCGGCTTGTTAAG	TCGTACACCCAGTCGGGTAACCTG	63
5	Chlre2_kg.scaffold_50000017	CCCAAGCAGATGATGGAGTACCTG	AACTCGCTGCTGAACACCTTCTC	71
6	Chlre2_kg.scaffold_71000018	TCAAATCCGCGCTCAACGTACC	GCGTCCAGCTGAGACTTATCATCG	64
7	estExt_fgenes2_kg.C_160082	GTGCAACCAACAACGCACGAAG	GTTGCTCGACCAATCCAATGCC	80
8	estExt_fgenes2_kg.C_560016	ATGTACTACCTGCGCACCAAGG	GCTCATGGAGGGCATCTTCATCTG	141
9	estExt_fgenes2_kg.C_90002	CGCCTTCTATCAGAGAACGAGTGG	CCGCCTGAACAGCATGATATGTGG	108
10	estExt_fgenes2_pg.C_10108	TGCCCTACGTCATCATCAAGGC	CAGGTAGTGCTGCACGTCAATG	110

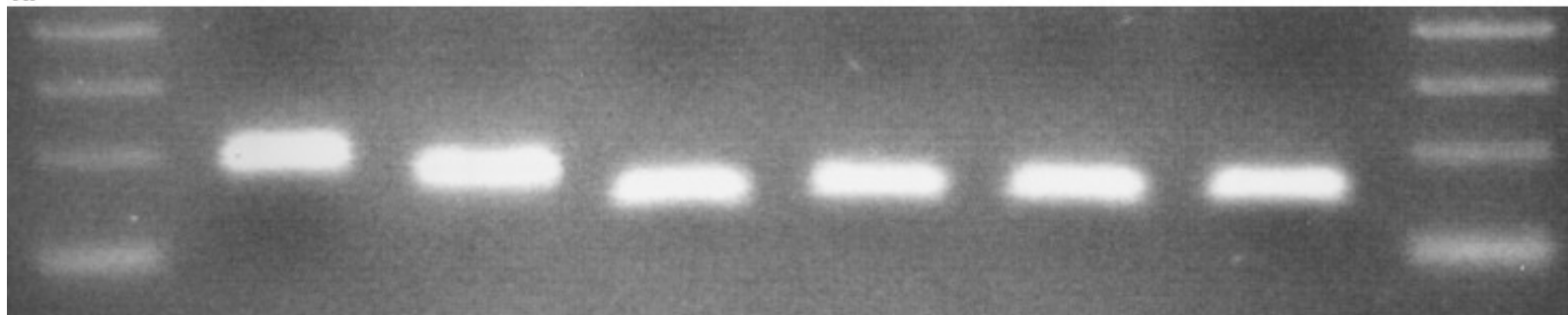
Examples of primer pairs

Hordeum vulgare (D)

No	Transcript	Forward primer sequence 5'-3'	Reverse primer sequence 5'-3'	Amplicon size
1	Bmic7	GCATTTGTGCATGTGTGTCATCTC	TGGCCTTATTACAAGCAGCAGGAG	65
2	Bmic8	TTTGTGTACGCGCGCCTGATAG	GTCAGTCGGATGCACAAAGGAC	66
3	Bmic9	CATCAGATTGAGCATCCAGTCCAG	TCGTCGCCTCCATTATGCTCAC	67
4	Bmic10	TCAGCTACGCCAGCTATGAAGC	AGCACCTCTTGATCAGGTCACTG	76
5	Bmic13	AGTGCAAGCACTTCCTCTCTGAC	GCGAAATGGTTCGACCACCAAC	65
6	Bmic14	TGCAGTAAGCGGAGGAAGATACG	ACAGGAAGCACCATTGTCCTC	65
7	Bmic15	ACCGGTTTCATGGTCTCTTGATGG	AGGAAGACCGGAAGGCACATTG	72
8	Bmic16	AACCAGTTGTCAGGGCCGATTC	TGCACAAACAGTTCCTGAAGCC	68
9	Bmic19	ATCCAAGTGCTCCACCGTCAAC	ATGCGCATGCTGTTTCGCAGAC	76
10	Bmic21	CCCGTACATACAAGTGCAAGCC	GATGCGGCAAGAGAAGGACAAC	74
11	Bmic22	ACTTCCACGCCTACACCATCTC	ATGCTGGAGTAGCCGAACATGG	142
12	Bmic23	GCTTTGCAAATGCAGGAGGAAGC	ACTCCAACGCTTGGACCTTCTG	76

Examples of primer pairs

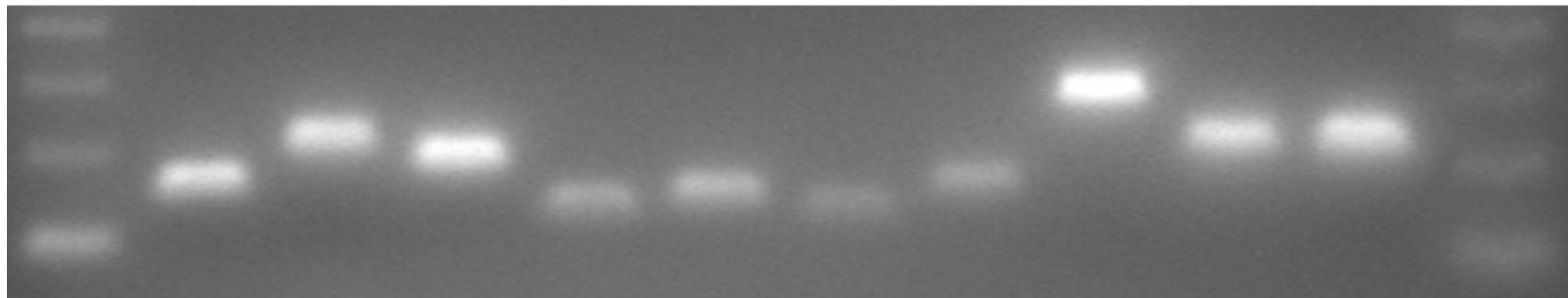
A.



B.



C.



Examples of primer pairs

D.

