



Humanwissenschaftliche Fakultät

Martijn Gäbler | Olaf Prieske | Tibor Hortobagyi | Urs Granacher

The Effects of Concurrent Strength and Endurance Training on Physical Fitness and Athletic Performance in Youth

A Systematic Review and Meta-Analysis

Suggested citation referring to the original publication:

Frontiers in Physiology 9 (2018) Art. 1057

DOI <http://dx.doi.org/10.3389/fphys.2018.01057>

ISSN (online) 1664-042X

Postprint archived at the Institutional Repository of the Potsdam University in:

Postprints der Universität Potsdam

Humanwissenschaftliche Reihe ; 471

ISSN 1866-8364

<http://nbn-resolving.de/urn:nbn:de:kobv:517-opus4-417683>



The Effects of Concurrent Strength and Endurance Training on Physical Fitness and Athletic Performance in Youth: A Systematic Review and Meta-Analysis

Martijn Gäbler^{1,2*}, Olaf Prieske¹, Tibor Hortobágyi² and Urs Granacher¹

¹ Division of Training and Movement Sciences, Research Focus Cognition Sciences, Faculty of Human Sciences, University of Potsdam, Potsdam, Germany, ² Center for Human Movement Sciences, University Medical Center Groningen, University of Groningen, Groningen, Netherlands

OPEN ACCESS

Edited by:

Evangelos A. Christou,
University of Florida, United States

Reviewed by:

Giovanni Messina,
University of Foggia, Italy
Sandra K. Hunter,
Marquette University, United States

*Correspondence:

Martijn Gäbler
mgaebler@uni-potsdam.de

Specialty section:

This article was submitted to
Exercise Physiology,
a section of the journal
Frontiers in Physiology

Received: 30 November 2017

Accepted: 16 July 2018

Published: 07 August 2018

Citation:

Gäbler M, Prieske O, Hortobágyi T and Granacher U (2018) The Effects of Concurrent Strength and Endurance Training on Physical Fitness and Athletic Performance in Youth: A Systematic Review and Meta-Analysis. *Front. Physiol.* 9:1057. doi: 10.3389/fphys.2018.01057

Combining training of muscle strength and cardiorespiratory fitness within a training cycle could increase athletic performance more than single-mode training. However, the physiological effects produced by each training modality could also interfere with each other, improving athletic performance less than single-mode training. Because anthropometric, physiological, and biomechanical differences between young and adult athletes can affect the responses to exercise training, young athletes might respond differently to concurrent training (CT) compared with adults. Thus, the aim of the present systematic review with meta-analysis was to determine the effects of concurrent strength and endurance training on selected physical fitness components and athletic performance in youth. A systematic literature search of PubMed and Web of Science identified 886 records. The studies included in the analyses examined children (girls age 6–11 years, boys age 6–13 years) or adolescents (girls age 12–18 years, boys age 14–18 years), compared CT with single-mode endurance (ET) or strength training (ST), and reported at least one strength/power—(e.g., jump height), endurance—(e.g., peak $\dot{V}O_2$, exercise economy), or performance-related (e.g., time trial) outcome. We calculated weighted standardized mean differences (SMDs). CT compared to ET produced small effects in favor of CT on athletic performance ($n = 11$ studies, $SMD = 0.41$, $p = 0.04$) and trivial effects on cardiorespiratory endurance ($n = 4$ studies, $SMD = 0.04$, $p = 0.86$) and exercise economy ($n = 5$ studies, $SMD = 0.16$, $p = 0.49$) in young athletes. A sub-analysis of chronological age revealed a trend toward larger effects of CT vs. ET on athletic performance in adolescents ($SMD = 0.52$) compared with children ($SMD = 0.17$). CT compared with ST had small effects in favor of CT on muscle power ($n = 4$ studies, $SMD = 0.23$, $p = 0.04$). In conclusion, CT is more effective than single-mode ET or ST in improving selected measures of physical fitness and athletic performance in youth. Specifically, CT compared with ET improved athletic performance in children and particularly adolescents. Finally, CT was more effective than ST in improving muscle power in youth.

Keywords: child, adolescent, muscle strength, cardiorespiratory fitness, physical conditioning human, resistance training, youth sports

INTRODUCTION

Physical activity promotes motor development and physical fitness in youth. The World Health Organization recommends at least 60 min of moderate- to vigorous-intensity physical activity daily in youth aged 5–17 years. Most of the physical activity should be aerobic with additional muscle strengthening exercises conducted at least three times per week (WHO, 2010). Thus, the general youth population should regularly perform endurance and strength exercises. While physical activity promotes motor development in youth, young athletes may specifically benefit from endurance training (ET) and strength training (ST) during long-term development of sport-specific athletic performance. Indeed, high levels of muscular strength and aerobic endurance are key determinants of success in many sports (Baar, 2014; Bompa and Buzzichelli, 2015). According to the concept of training specificity (Häkkinen et al., 1989; Behm, 1995), ST improves muscular strength and ET improves cardiorespiratory endurance.

To increase athletic performance, athletes and coaches seek ways to optimize training and minimize risks for injury. A promising way to increase performance is to train both muscle strength and cardiorespiratory fitness within a training cycle [i.e., concurrent training (CT)]. CT could potentiate the individual effects produced by ET and ST and increase athletic performance more than training ET and ST alone. A favorable interaction between ST and ET may reduce time spent on ST and ET and increase time for recovery or training for sport-specific skills. Indeed, CT compared with single-mode ET may produce larger performance improvements in time trials in runners and cyclists (Rønnestad and Mujika, 2014). In addition, when elite cyclists combined cycling and lower limb progressive resistance training, CT improved mean power output during a 45 min cycle-ergometer test more (Δ : 26.4 W, 8.4%) than did ET (Δ : 11.5 W, 3.7%) (Aagaard et al., 2011).

However, ST and ET could also interfere with each other (Docherty and Sporer, 2000) and produce inferior gains in muscular strength compared with ST, resulting in an “interference effect” (Hickson, 1980; Wilson et al., 2012). Interference occurs when strength and endurance stimuli both target peripheral (i.e., muscular) adaptations (e.g., hypertrophy vs. muscle capillarisation) (Docherty and Sporer, 2000) and a meta-analysis confirmed the CT-related “interference hypothesis” (Wilson et al., 2012). That is, ST alone compared to CT produced larger improvements in muscle strength (within group standardized mean differences [SMD]: 1.76 vs. 1.44), muscle hypertrophy (within group SMD: 1.23 vs. 0.85), and muscle power (within group SMD: 0.91 vs. 0.55).

Current theories on the potentiating or interfering effects in CT have been derived from data in adult humans and animals. Because anthropometric, physiological, and biomechanical differences between youth and adults can affect the responses to exercise training, youth compared with adults might respond differently to CT. That is, the physiological processes associated with growth and maturation make the application of adult data to children untenable. For instance, Spurrs et al. (2003) found positive effects of CT compared to ET on 3 km performance

{CT: -10 s [1.6%]; ET: -3 s [0.5%]} and running economy at running velocities above 12 km/h (CT: 4–7%; ET: <1%) in 25-year-old distance runners, whereas Bluett et al. (2015) reported a slight decrease in 3 km performance in 10–13 year old distance runners in the CT group (Δ : 6 s, 0.8%), but a slight improvement in the ET group (Δ : -17 s, 2.1%). Further, ST designed to induce hypertrophy in adults (Fleck and Kraemer, 2014) failed to produce hypertrophy in prepubescent children (Ozmun et al., 1994; Granacher et al., 2011). In addition, a 10 week machine-based ST using sub-maximal intensities (70–80% of the 1-repetition maximum [1RM]) increased lower-limb muscle strength but not quadriceps cross-sectional area as measured with magnetic resonance imaging in prepubertal children (Granacher et al., 2011). The apparent inability of children’s muscles to hypertrophy following training is attributed to low levels of androgens (Virus et al., 1999; Legerlotz et al., 2016).

Given the anthropometric, physiological, and biomechanical differences between youth and adults and the need to optimize the training stimulus, the present review with meta-analysis aimed to determine whether CT compared with single-mode ET and ST would produce a potentiating or interfering effect in children and adolescents. Specifically, we compared the effects of CT and ET on endurance-related outcomes (cardiorespiratory endurance, exercise economy) and on athletic performance (e.g., time trials) and the effects of CT and ST on strength-related outcomes (maximum muscle strength, muscle power, muscle hypertrophy). We formulated three hypotheses based on previous work. First, given the role of muscle strength in youth physical development and sports (Lloyd and Oliver, 2012; Faigenbaum et al., 2016), we hypothesized that CT is more effective than single-mode ET in improving athletic performance as assessed by time trials. Second, we hypothesized that CT compared to single-mode training results in larger improvements in physical fitness because CT results in adaptations of the muscular and cardiorespiratory systems that are both related to physical fitness outcomes. Third, we hypothesized that CT-related interference effects in strength adaptations are age-dependent and present in adolescents but not in children because prepubescent children appear not to have the physiological basis for training-induced muscle hypertrophy.

METHODS

The systematic literature search and meta-analysis was performed in accordance with the recommendations of the Preferred Reporting Items for Systematic reviews and Meta-Analyses (PRISMA) statement (Moher et al., 2010).

Literature Search

The electronic databases PubMed and Web of Science were consulted from 1980 until June 7th 2018 using the following Boolean search syntax: “(youth OR young OR children OR adolescents OR pubertal OR boys OR girls OR school) AND (athlete OR sport OR trained) AND (training OR exercise) AND (concurrent OR combined OR combination OR additional) AND (strength OR resistance OR endurance OR aerobic) NOT (elderly OR student OR college OR patient OR disease OR

syndrome OR (cerebral palsy) OR injury OR sedentary OR obese OR animals OR supplementation OR validity).” Where available, we applied filters to limited the output of the search according to the age of participants (Child: 6–12 years; Adolescent: 13–18 years), language (English), article type (no review), and research areas (sport sciences or physiology). Additionally, the reference lists of relevant studies were screened.

Eligibility Criteria

We formed eligibility criteria using the PICOS (Population, Interventions, Comparators, Outcomes, Study design) approach (University of York, Centre for Reviews and Dissemination., 2009). Studies were found eligible for inclusion in the meta-analysis when participants were healthy children or adolescents age 6–18 years. Because biological age is not often reported in studies (Lesinski et al., 2016), participants were categorized based on their chronological age according to Faigenbaum et al. (2009) as children (boys age 6–13 y and girls age 6–11 y) or adolescents (boys age 14–18 y and girls age 12–18 y). Furthermore, we used the definition proposed by Williams (2016) to distinct young athletes from non-athletic youth, namely: “a child or adolescent who is still growing and maturing toward adulthood and who systematically trains (> once per week) and competes (>1-year competition history) in at least one specific sport.” With respect to the intervention, studies needed to have applied a CT protocol to at least one group in the study. Furthermore, at least one active control group was required that followed single-mode ET or ST to function as a comparator. For athletes, this meant that a major part of their training consisted of either ET or ST. Studies with two or more different concurrent training protocols, but without a single-mode training group were included in the qualitative analysis of the review but not in the meta-analysis. Means and standard deviations of one or more of the following outcomes had to be reported for all groups before and after intervention: measures of maximum muscle strength, muscle power, muscle hypertrophy, cardiorespiratory endurance, exercise economy, and athletic performance (see also **Table 1**). We defined athletic performance as a sport-specific competitive outcome (e.g., time trial, ball kicking velocity).

The selection process started with the removal of duplicate studies, followed by the screening of titles, abstracts and eventually full texts of the respective studies.

Data Collection

Pre- and post-test means and standard deviations (SDs) were preferably collected from numerical data reported in publications. Authors were contacted in case of unreported data. When authors did not respond, means and SDs were estimated from figures using GetData Graph Digitizer (<http://www.getdata-graph-digitizer.com/>). Ultimately, SDs were deduced by estimating post-test SD from pre-test SD. Outcomes were excluded when crucial data were still missing.

If more than one outcome measure was reported for a certain variable, only one outcome was included in the analyses to prevent bias. As a general remark, easily administered field tests were preferred over more sophisticated lab measures for the sake of homogeneity, because only few studies reported lab measures.

TABLE 1 | Preferred and alternative outcomes for each outcome measure.

Category	Preferred outcome	Alternative outcome(s)
Maximum muscle strength	1 repetition maximum	>1 repetition maximum Dynamometry
Muscle power	Countermovement jump	Other jump height Dynamometry
Muscle hypertrophy	Muscle cross-sectional area	Muscle mass Muscle thickness
Cardiorespiratory endurance	Peak $\dot{V}O_2$	$\dot{V}O_2$ max Estimated $\dot{V}O_2$ max
Exercise economy	$\dot{V}O_2$ at submaximal velocity	–
Athletic performance	Relevant sport specific outcome (e.g., time trial, kicking / throwing velocity)	–

An overview of preferred and alternative outcomes can be found in **Table 1**.

Risk of Bias Assessment

Heterogeneity between studies was assessed using I^2 percentages for each outcome and interpreted according to Higgins et al. (2003) as low (>25%), moderate (>50%), or high (>75%). The risk of bias and methodological quality of the included studies were further quantified through the Physiotherapy Evidence Database (PEDro) scale (Maher et al., 2003). The PEDro scale consists of 11 dichotomous questions of which 10 are evaluated. Scoring ranges from 0 to 10 where a higher score indicates a lower risk of bias. A score ≥ 6 is indicative of a high study quality. A score ≥ 4 indicates a fair study quality.

Statistical Analyses

For each study, between-group standardized mean differences (SMD) were calculated for post-test mean values (m) and corrected for sample size (N) according to Hedges and Olkin (1985) ($SMD_{between} = \frac{m_{1i} - m_{2i}}{s_i} \cdot (1 - \frac{3}{4N-9})$). SMDs were multiplied by -1 for measures where an improvement in performance was indicated by a negative change (e.g., time trials). Further analyses were performed in Review Manager 5.3.5 (Copenhagen: The Nordic Cochrane Centre, The Cochrane Collaboration, 2014). To compare the effects of CT to the effects of single-mode ET and ST on different outcome measures, SMDs were weighted with respect to their standard errors and aggregated to compute the overall SMD using a random effects model. Overall SMDs were interpreted according to Cohen (1988) as trivial ($SMD < 0.2$), small ($0.2 \leq SMD < 0.5$), moderate ($0.5 \leq SMD < 0.8$), or large ($0.8 \leq SMD$). Chi-squared (χ^2) statistics were calculated to determine differences in outcomes between sub-groups. See Deeks and Higgins (2010) for a more detailed description on formulae.

Within group SMDs were calculated as ($SMD_{within} = \frac{m_{post} - m_{pre}}{s_{d_{pre}}}$). Relationships between within

group SMDs of outcome measures and group characteristics were quantified by Pearson correlation coefficients.

An α of 0.05 was used to determine statistical significance.

RESULTS

The systematic search identified 886 records. **Figure 1** shows the article selection process. Fifteen studies were eligible for inclusion in the meta-analysis with a total of 33 training groups, of which eighteen, eleven, and four groups were categorized as CT, ET, and ST, respectively. Eleven studies examined young athletes (swimming, running, rowing) and compared CT with ET and four studies involved non-athletic youth and compared CT with ET. In total, the number of participants was 518 (268 male, 250 female). Mean ages ranged from 10.7 to 18.2 (median = 14.1) years and fourteen training groups were classified as children and nineteen as adolescents. Two additional records (Enright et al., 2015; Makhoulouf et al., 2016) were not eligible for inclusion in the meta-analysis, but were included in the qualitative analysis. **Table 2** characterizes the populations and training programs and

shows the quality assessment (PEDro) scores (range: 3 to 7, median = 4).

The meta-analytical comparisons between CT vs. ST and CT vs. ET are presented in the forest plots (**Figures 2–4, 6**) and are described in the next sections. Comparisons between CT and ET involved only young endurance athletes and comparisons between CT and ST involved non-athletic youth only.

Effects of CT vs. ET on Endurance-Related Outcomes

Four studies reported a measure of cardiorespiratory endurance, either as peak $\dot{V}O_2$, or as $\dot{V}O_{2\max}$ (**Figure 2**). Compared to ET, CT had a trivial effect on cardiorespiratory endurance in adolescent endurance athletes age 15.9 to 18.2 years (SMD = 0.04; $p = 0.86$; $I^2 = 22\%$). Due to the limited data, sub-group comparisons (trained vs. untrained, children vs. adolescents, boys vs. girls) were not possible.

Five studies reported exercise economy as $\dot{V}O_2$ at a submaximal intensity during swimming, running, skiing on a

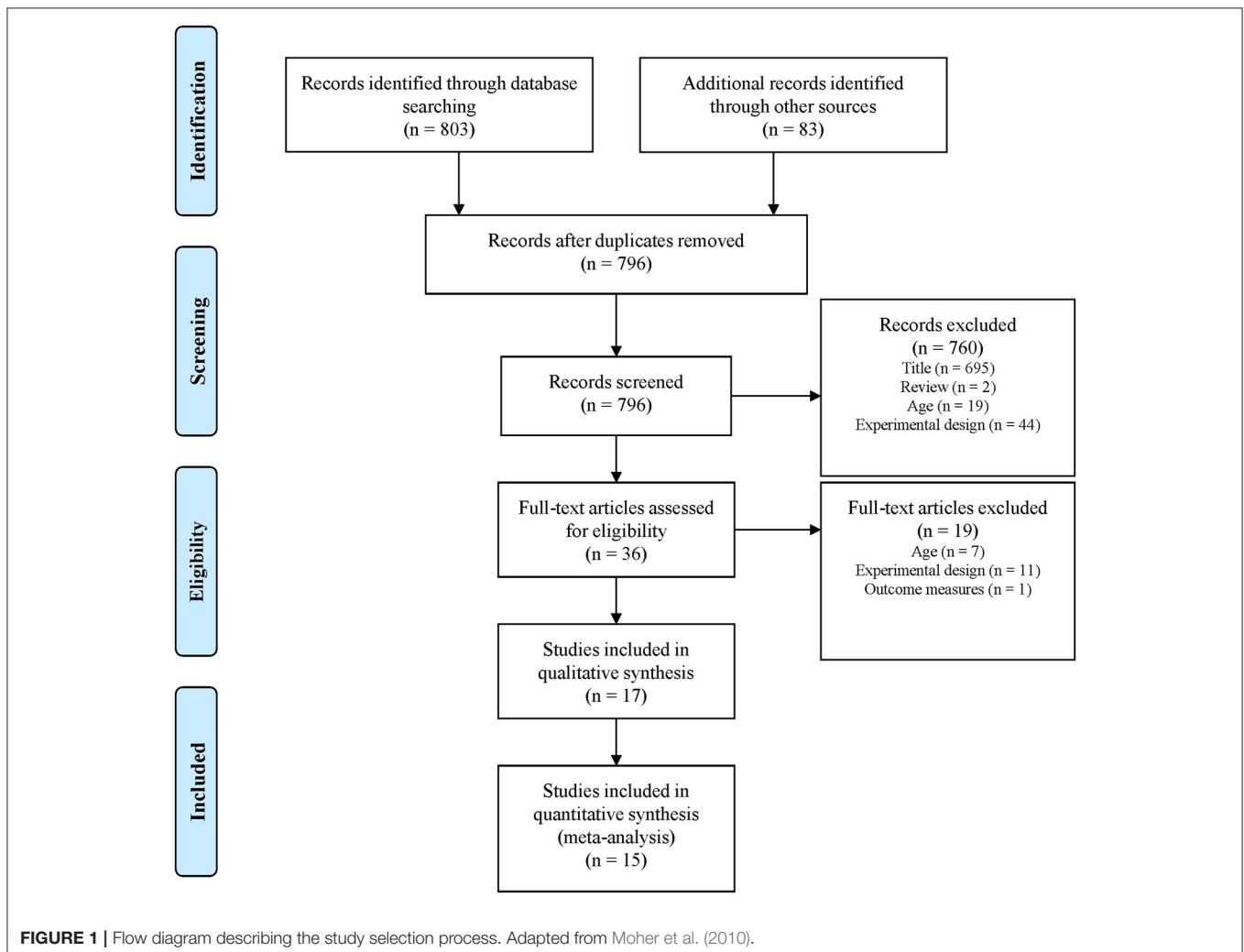


TABLE 2 | Study characteristics.

Author Name, year	Sport	Tr grp	N (m/f)	B. Age	C. Age	Endurance training			Strength training					P E D r o				
						Contents	W	F	Time or distance	Intensity	Contents	W	F		S	Reps	Rest	Intensity %RM
Aspenes et al., 2009	Swimming	CT	11 (6/5)	-	17.5 ± 2.9	Interval swimming	11	2	4 x 4 min 3 x 3 min	90–95% HF _{max} 60–75% HF _{max}	Machine	11	2	3	5	2–5	5 RM	3
						Interval swimming	11	2	4 x 4 min 3 x 3 min	90–95% HF _{max} 60–75% HF _{max}								
Amaro et al., 2017	Swimming	CT	7 (7/0)	-	12.7 ± 0.8	Swimming	10	6	4.1 km	High volume, low intensity	Power, core training	6	2	3	6–18	40–90s	-	7
						Swimming	10	6			Power, core training	6	2	3	10–25s	40–100s	-	
Blagrove et al., 2018	Running	CT	9 (4/5)	3.1	16.5 ± 1.1	Running	10		151 min/week	High volume, low intensity	Plyometric and free weight	10	2	2–4	6–15	90–180s	-	4
						Running	10		213 min/week	High volume, low intensity								
Bluett et al., 2015	Running	CT	6 (3/3)	-	10–13	Continuous and interval running	10	2	30 min/300m 800 m	60–100% of maximal effort	Machine	10	1	3–4	10–12	2	70–75% 1RM	4
						Continuous and interval running	10	2	30 min/300m 800 m	60–100% of maximal effort								
Carlsson et al., 2017	Cross country ski	CT	14 (7/7)	-	18.5 ± 0.9	Regular training					Free weight, body weight	6	2	2–3	30–90 s	60 s	8RM/ 60–85% BW	4
						Ski-ergometer	6	2	40 min	90–100% HF _{max}								
Egan-Shuttler et al., 2017	Rowing	CT	8 (8/0)	-	16 ± 0.8	Rowing	4	3	30 min	Low intensity	Plyometric	4	3	2–5	5–20	-	-	4
						Cycling + Rowing	4	3	2 x 30 min	Low intensity								
Garrido et al., 2010	Swimming	CT	12 (8/4)	1–2	12.0 ± 0.8	Swimming	8	6	1.5h	70% VO _{2max}	Free weight	8	2	2–3	6–8	2	50–75%/6RM	4
						Swimming	8	6	1.5h	70% VO _{2max}								

(Continued)

TABLE 2 | Continued

Author Name, year	Sport	Tr grp	N (m/f)	B. Age	C. Age	Endurance training			Strength training					P E D r o			
						Contents	W	F	Time or distance	Intensity	Contents	W	F		S	Reps	Rest
Giroldi et al., 2007	Swimming	CT	7 (4/3)	-	16.5 ± 2.5	Swimming + cycling	12	8.3 h/week	60–70% HF _{max}	Machine	12	1	3	6	2	80–90% 1RM	4
		CT	7 (3/4)	-	16.5 ± 2.5	Swimming + cycling	12	8.3 h/w	60–70% HF _{max}	Resisted swimming	12	1	2	3	30 s		
		ET	7 (3/4)	-	16.5 ± 1.5	Swimming + cycling	12	10.8 h/w	60–70% HF _{max}								
Mikkola et al., 2007	Running	CT	13 (9/4)	-	17.3 ± 0.9	Running training	8	7.2 h/w	-	High velocity	8	1	2–3	6–10	-	No or low load	4
		ET	12 (9/3)	-	17.3 ± 0.5	Running training	8	8.5 h/w	-								
Potdevin et al., 2011	Swimming	CT	12 (5/7)	3–4	14.3 ± 0.2	Swimming	6	5.5 h/w	-	Plyometric	6	2	1–8	1–16	-	BW	4
		ET	11 (5/6)	3–4	14.1 ± 0.2	Swimming	6	5.5 h/w	-								
Weston et al., 2015	Swimming	CT	10 (5/6)	-	15.7 ± 1.2	Swimming	12	8 h/w	-	Core training	6	2	2	60 s	60 s	BW	3
		ET	10 (5/6)	-	16.7 ± 0.9	Swimming	12	8 h/w	-								
Alves et al., 2016	-	CT	38 (21/17)	-	11.0 ± 0.5	20 m shuttle run	8	-	≤ Estimated 75% VO ₂ max	Ball throw; jump, sprint	8	2	1–4	4–8	-	-	5
		CT	45 (21/24)	-	10.8 ± 0.5	20 m shuttle run	8	-	≤ Estimated 75% VO ₂ max	Ball throw; jump, sprint	8	2	1–4	4–8	-	-	
		ST	41 (19/22)	-	10.8 ± 0.4					Ball throw; jump, sprint	8	2	1–4	4–8	-	-	
Marta et al., 2013	-	CT	45 (21/24)	1–2	10.7 ± 0.5	20 m shuttle run	8	-	≤ Estimated 75% VO ₂ max	Ball throw; jump, sprint	8	2	1–5	3–8	1–2	-	5
		ST	41 (19/22)	1–2	10.7 ± 0.4					Ball throw; jump, sprint	8	2	1–5	3–8	1–2	-	
Santos et al., 2012	-	CT	25 (0/25)	-	13.5 ± 1.0	20 m shuttle run	8	-	≤ Estimated 75% VO ₂ max	Ball throw; jump, sprint	8	2	1–5	3–8	-	-	5
		ST	21 (0/21)	-	13.5 ± 1.0					Ball throw; jump, sprint	8	2	1–5	3–8	-	-	

(Continued)

TABLE 2 | Continued

Author Name, year	Sport	Tr grp	N (m/f)	B. Age	C. Age	Endurance training			Strength training					P E D r o										
						W	F	Time or distance	Intensity	Contents	W	F	S		Reps	Rest	Intensity %RM							
Santos et al., 2012	-	CT	15 (15/0)	-	13.3 ± 1.0	8	2	-	≤ Estimated 75% VO ₂ max	Ball throw; jump, sprint	8	2	1-5	3-8	-	-	6							
																		20 m shuttle run	Ball throw; jump, sprint					
Enright et al., 2015	Soccer	CT	8 (0/8)	-	17.3 ± 1.6	5	2	3.2	-	Soccer specific ET	5	2	3-4	6-8	-	-	85%/60-80% 1RM	4						
																			Soccer specific ET	Free-weight and body weight				
Makhlouf et al., 2016	Soccer	CT	14 (14/0)	-	13.7 ± 0.5	5	4	3.2	-	Soccer specific ET	12	4	15 s	110-120% of aerobic test	23 whole body	12	2	3	5-15	-	-	Body-weight	4	
																								Interval running
Makhlouf et al., 2016	Soccer	CT	15 (15/0)	-	13.7 ± 0.5	12	4	15 s	110-120% of aerobic test	Interval running	12	2	3	5-15	-	-	-	-	-	-	-	-	-	-

Tr, training group; B, Age, biological age; C, chronological age; W, number of weeks; F, training frequency per week; S, number of sets per exercise; Reps, number of repetitions per set; 1RM, one repetition maximum; HF, heart frequency; BW, Body weight (as resistance).

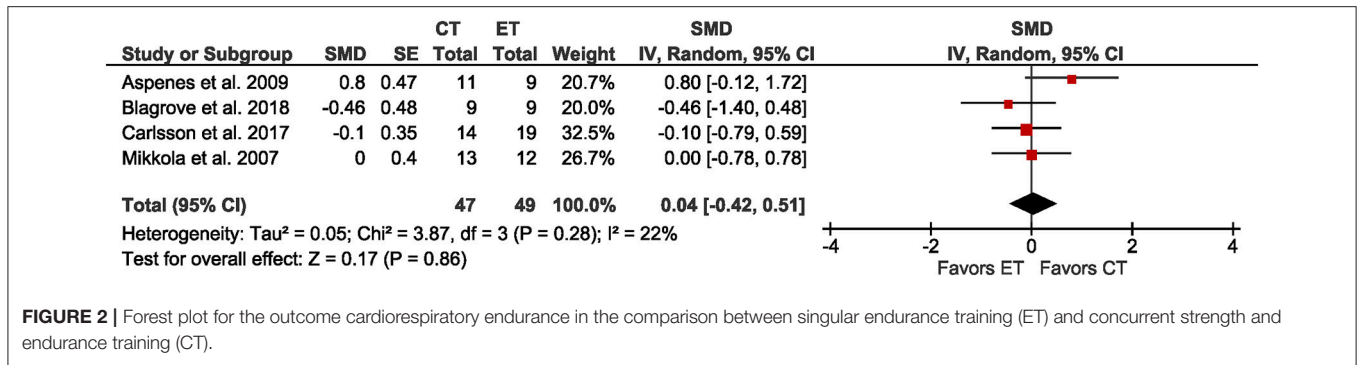


FIGURE 2 | Forest plot for the outcome cardiorespiratory endurance in the comparison between singular endurance training (ET) and concurrent strength and endurance training (CT).

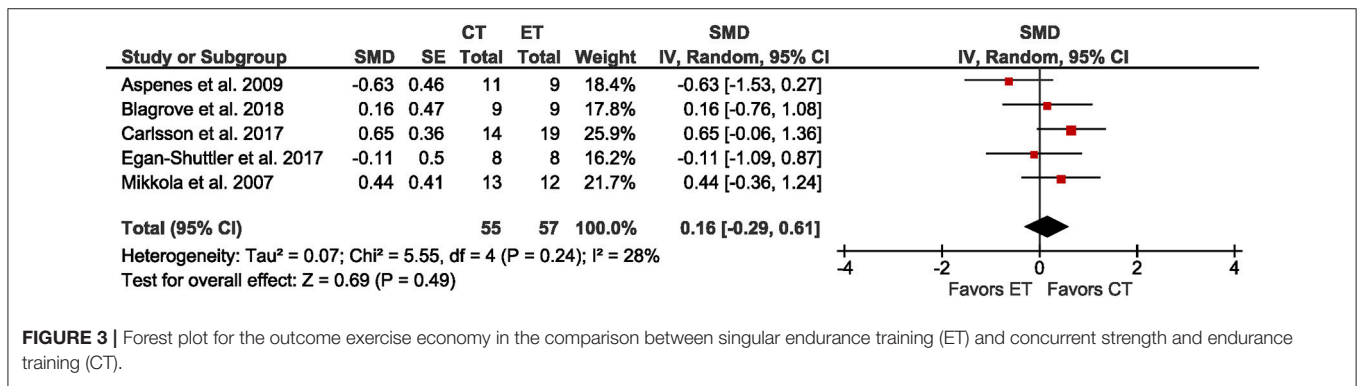


FIGURE 3 | Forest plot for the outcome exercise economy in the comparison between singular endurance training (ET) and concurrent strength and endurance training (CT).

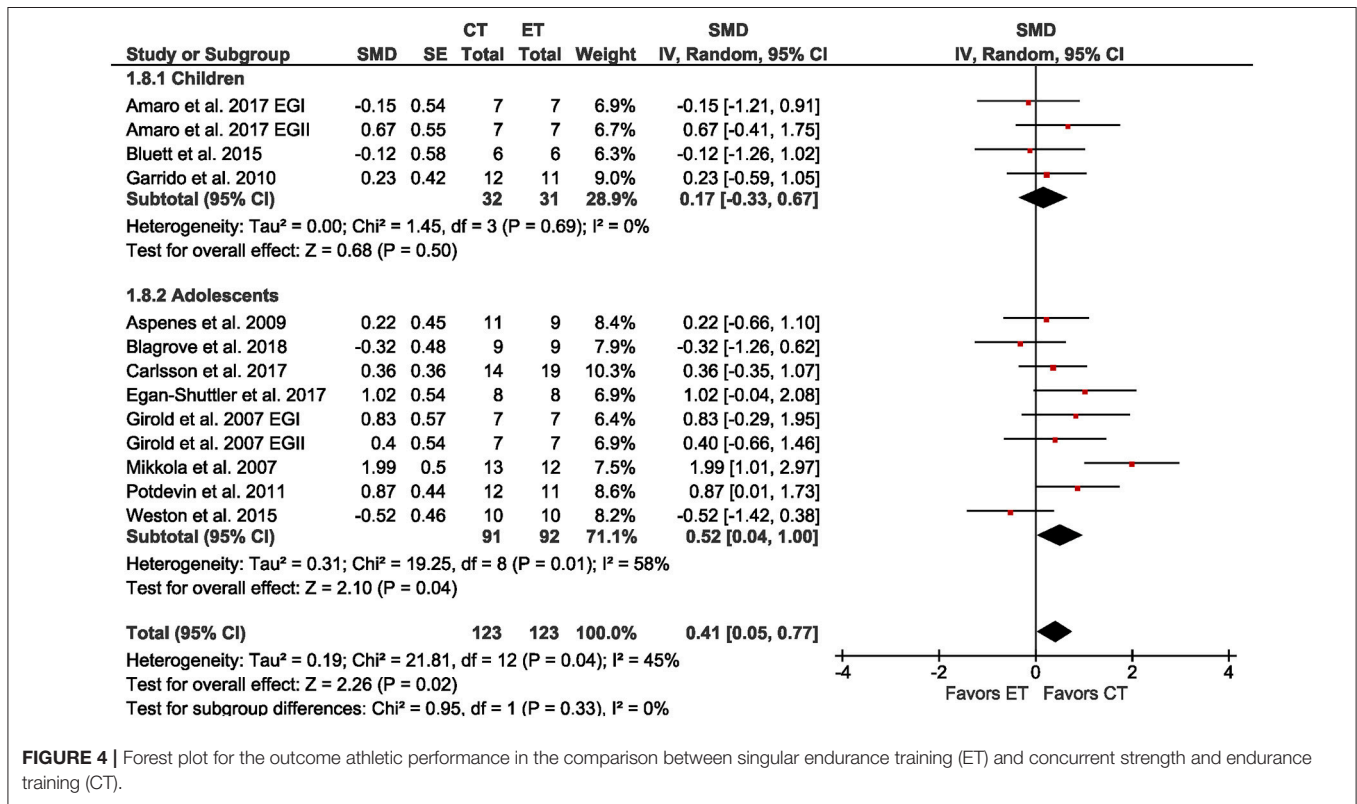


FIGURE 4 | Forest plot for the outcome athletic performance in the comparison between singular endurance training (ET) and concurrent strength and endurance training (CT).

treadmill, or rowing ergometry in adolescent athletes. The meta-analysis (Figure 3) revealed a trivial non-significant effect size (SMD = 0.16; $p = 0.24$; $I^2 = 28\%$) of CT compared to ET. Due to small sample sizes, sub-group analyses by age, sex, and training status were not possible.

All eleven studies involving young athletes reported a measure of athletic performance as the time of, or the mean velocity during, a time trial with distances ranging from 30 to 3000 m (median = 275 m). The meta-analysis (Figure 4) showed a significant small effect (SMD = 0.41; $p = 0.02$; $I^2 = 45\%$) of CT over ET. A sub-analysis of age revealed a moderate effect of CT over ET in adolescent athletes (SMD = 0.52; $p = 0.02$; $I^2 = 58\%$), but only a trivial effect in child athletes (SMD = 0.17; $p = 0.50$; $I^2 = 0\%$). However, the difference in effect sizes was not significant ($\chi^2 = 0.95$; $df = 1$; $p = 0.33$). Due to small sample sizes, sub-group analyses by sex and training status were not possible.

We found a moderate negative association between chronological age and within group SMDs in athletic performance in young athletes following ET ($r = -0.60$; $p = 0.04$), but only a trivial correlation for CT ($r = 0.02$; $p = 0.94$) (Figure 5). In addition to the 11 studies in young endurance athletes we included data from two studies on CT in young soccer players (Enright et al., 2015; Makhlof et al., 2016) to better be able to evaluate the relationship.

Effects of CT vs. ST on Strength/Power-Related Outcomes

Four studies assessed vertical jump height (CMJ) as a proxy for lower extremity muscle power in non-athletic youth age 10.7 to 13.5 years. The meta-analysis (Figure 6) revealed a significant but small overall effect size of CT over ST (SMD = 0.23; $p = 0.04$; $I^2 = 0\%$). A sub-analysis did not reveal differences ($\chi^2 = 0.14$; $df = 1$; $p = 0.71$) between SMDs for children (SMD = 0.25; $p = 0.04$; $I^2 = 0\%$) and adolescents (SMD = 0.14; $p = 0.66$; $I^2 = n/a$). Due to small sample sizes, sub-group analyses by sex and training status were not possible. No studies reported maximum muscle strength or muscle hypertrophy as outcomes.

DISCUSSION

This is the first systematic review that quantified the effects of CT vs. single-mode training (ST, ET) on selected measures of physical fitness and athletic performance in youth. We compared the effects of ET with CT on cardiorespiratory endurance, exercise economy, and athletic performance. We also compared the effects of ST with CT on leg power. CT resulted in larger improvements than single-mode ET on measures of athletic performance, whereas CT compared with ST improved leg power more. Due to small sample sizes, sub-group analyses by age, sex, and training status were not possible. As all comparisons between CT and ET were conducted in young endurance athletes and all comparisons between CT and ST included non-athletic youth, we address the groups in the discussion according to their training status.

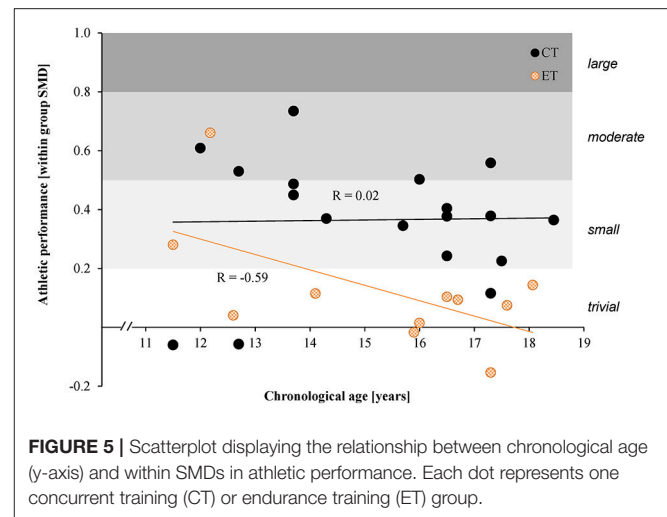


FIGURE 5 | Scatterplot displaying the relationship between chronological age (y-axis) and within SMDs in athletic performance. Each dot represents one concurrent training (CT) or endurance training (ET) group.

Effects of CT vs. ET in Young Endurance Athletes

We hypothesized that CT is more effective than ET for improving athletic performance as assessed by time trials in young endurance athletes because muscle strength is a determinant of athletic performance (Faigenbaum et al., 2016). CT was more effective than single-mode ET to improve athletic performance assessed by time trials (Figure 4, SMD = 0.41, $p = 0.04$). This finding is in line with recommendations to include ST in the training of young athletes (Faigenbaum et al., 2009) and with models of long-term athletic development (Lloyd and Oliver, 2012) but direct evidence was limited to a handful of individual studies. Other meta-analyses incorporated young endurance athletes, but grouped them together with adult endurance athletes (e.g., Balsalobre-Fernández et al., 2016) or young athletes from different sports (Lesinski et al., 2016). Lesinski et al. (2016) also found moderate effects (SMD = 0.75) of ST on athletic performance in young athletes, mainly involving soccer players. As Lesinski et al. (2016), we also found low to moderate heterogeneity in outcomes of athletic performance, which suggests that the interpretation may be biased. Methodological differences between studies can increase heterogeneity: the distances of time trials ranged from 30 m to 3,000 m (median = 275 m) in running, swimming, and rowing. The moderate heterogeneity implies that the effectiveness of CT depends on distance and type of sport. The study revealing the largest effect of CT on athletic performance (SMD = 1.99) indeed evaluated athletic performance over the shortest distance (i.e., 30 m) in running (Mikkola et al., 2007). Whereas the study using the longest distance (i.e., 3,000 m) in running showed only a trivial effect (SMD = -0.12) (Bluett et al., 2015).

Sub-group analysis based on chronological age indicated a trend toward higher effects of CT vs. ET on athletic performance in adolescent athletes (Figure 4, SMD_{children} = 0.17; SMD_{adolescents} = 0.52). The relationship between chronological age and athletic performance in the CT groups (Figure 5, $r = 0.02$) and ET groups (Figure 5, $r = -0.59$) suggests that

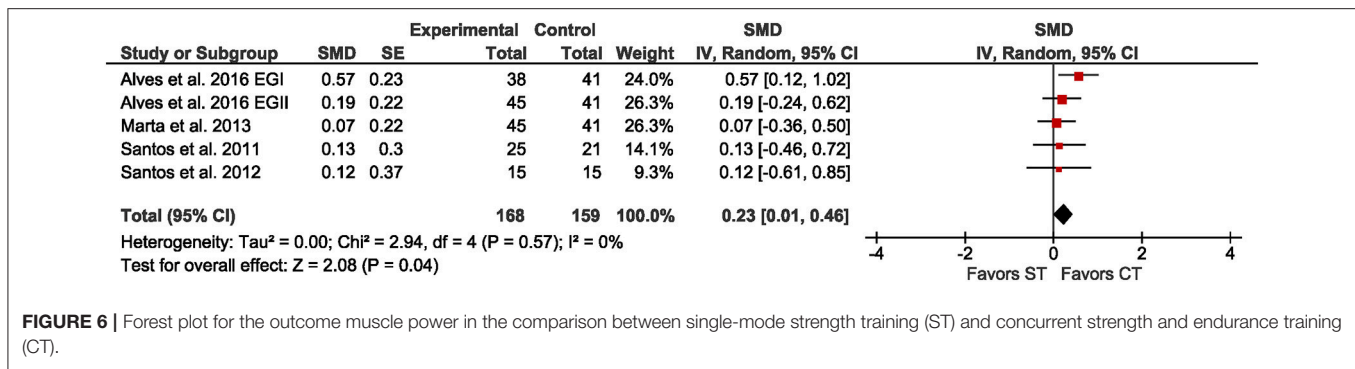


FIGURE 6 | Forest plot for the outcome muscle power in the comparison between single-mode strength training (ST) and concurrent strength and endurance training (CT).

with increasing age the effects of CT on athletic performance do not increase, but the effects of ET alone decrease. This is in line with Lloyd and Oliver's (Lloyd and Oliver, 2012) youth physical development model that recommends using ST throughout developmental stages. Furthermore, previous training experience plays a mediating role in the magnitude of training adaptation (Fleck and Dean, 1987; Fyfe and Loenneke, 2018). The discrepancy in associations between CT and ET could be explained by previous training experience. It could be argued that familiarity with the exercises in the ET groups increased with age, as the ET groups primarily followed their habitual training. As a result, younger athletes with less training experience could benefit more from ET than the older athletes with more experience. The novel exercises in the CT groups could induce adaptations even in older athletes.

Improvements in cardiorespiratory endurance, exercise economy, and performance at lactate threshold may all increase endurance performance (Rønnestad and Mujika, 2014). The limited and heterogeneous data in the present review made it difficult to determine how CT more than ET improved athletic performance in young endurance athletes. The present data suggest that neither cardiorespiratory endurance nor exercise economy improves following CT in young endurance athletes. Previous studies in adults (Aagaard and Andersen, 2010; Sunde et al., 2010; Rønnestad and Mujika, 2014; Balsalobre-Fernández et al., 2016; Denadai et al., 2017) suggested that CT may improve endurance performance by increasing exercise economy, without affecting cardiorespiratory endurance. Of all the studies reporting time trials, not even half of them reported measures on exercise economy or cardiorespiratory endurance (4–5 out of 11). Such paucity of data together with between-group differences at baseline, make it difficult to understand the mechanisms underlying the improvements in time trial performance.

In summary, adding ST to ET seemed to potentiate the effects produced by ET, as CT improved endurance athletes' endurance performance more than did ET. Such a potentiation effect may be greater in adolescents compared to children. However, it is unclear how CT leads to improved athletic performance in young endurance athletes.

Effects of CT vs. ST in Youth

We hypothesized that youth improve physical fitness more when performing CT compared to single-mode training and that the interference effect can be observed in adolescents but not in children because they lack the hypertrophic response to ST

(Ozmun et al., 1994; Granacher et al., 2011). The studies that compared CT to ST in non-athletic children (Santos et al., 2012; Marta et al., 2013; Alves et al., 2016) and adolescents (Santos et al., 2011) revealed that CT improved proxies of muscle power slightly more (Figure 6, SMD = 0.23, $p = 0.04$).

Unlike in adults (Wilson et al., 2012), combining ST and ET into CT resulted in a potentiating instead of an interference effect on untrained children's leg power. Perhaps the training status played a role in this potentiating effect in non-athletic children and adolescents. According to Coffey and Hawley (2017), "untrained individuals have a greater capacity to activate the molecular machinery in muscle in response to contractile activity, because any overload stimulus induces large perturbations to cellular homeostasis regardless of the mode of exercise." Accordingly, ET produced hypertrophy (Konopka and Harber, 2014) and ST increased oxidative capacity in untrained muscle (Tang et al., 2006). In line with this observation, the studies included in the present meta-analysis showed that ST improved estimated $\dot{V}O_2\text{max}$ in non-athletic youth (Δ between +0.3 and +1.6 $\text{mmol}\cdot\text{ml}^{-1}\cdot\text{kg}^{-1}$) (Santos et al., 2011, 2012; Marta et al., 2013; Alves et al., 2016) compared with passive control groups (Δ between -1.1 and +0.3 $\text{mmol}\cdot\text{ml}^{-1}\cdot\text{kg}^{-1}$). A second explanation may be related to the use of the 20 m shuttle run as an endurance outcome (Santos et al., 2011, 2012; Marta et al., 2013; Alves et al., 2016). These studies used the 20 m shuttle run test as an endurance exercise. The constant acceleration and deceleration of the center of mass could act as a stimulus for leg power measured in the form of jump performance.

The interference effect associated with CT increased with training volume (Rønnestad et al., 2012) and when the form of ET in CT was running in adults (Wilson et al., 2012). Sequencing order of ST and ET elements of CT may affect the magnitude of interference. Muscle hypertrophy might be compromised when ET is performed during the 18 h after ST (Baar, 2014). However, this hypothesis relies heavily on animal data. Meta-analyses of human data seem to favor the ST→ET sequence (Eddens et al., 2017; Murlasits et al., 2017). For instance, the ST→ET compared to the ET→ST sequence produced ~7% larger gains ($p < 0.01$) in 1RM squat in athletic and non-athletic adults age 18 to 65 y (Eddens et al., 2017). There were no favorable outcomes for either sequence in static strength, muscle hypertrophy or cardiorespiratory endurance. Data in adolescent soccer players (age 17 y) suggest that sequencing can affect improvements in maximum muscle strength, power, and hypertrophy (Enright et al., 2015). Unlike in adults, the

ET→ST vs. the ST→ET sequence was favored in adolescent soccer players. However, one limitation potentially biasing this conclusion was that athletes in the ET→ST group had slightly longer recovery time (2h) and their lunch between training sessions while the athletes in the ST→ET group had shorter recovery time (<1h) and a protein shake. Conflicting findings were observed in 13-year-old soccer players (Makhlouf et al., 2016), suggesting that the sequence of ET and ST did not affect improvements in strength-related outcomes in children. The findings of differential responses to sequencing in children and adolescents may be explained by our hypothesis that the interference effect of endurance exercise on strength development is age-dependent. However, it has to be noted that the studies on sequencing effects included no ST groups. It is therefore impossible to determine whether sequencing produced a potentiating or an interfering effect. The available data suggest that responses to sequencing are age-dependent but it is unclear whether this translates to the interference effect. Therefore, more research is needed to test the hypothesis that interfering effects of endurance exercise on strength adaptations are age-dependent and present in adolescent but not in child athletes.

In summary, CT can improve lower extremity muscle power more than ST in non-athletic youth. This finding is indicative of a potentiating effect of CT. Weak evidence in young athletes suggests that age is a factor to consider when manipulating the sequence of ET and ST. It remains inconclusive whether interfering effects of endurance exercise on strength adaptations are age-dependent in youth.

Strengths and Limitations

This is the first review with a meta-analysis to examine the effects of CT in youth with a specific focus on young athletes. The available data allowed us to examine the effects of training on the most relevant outcome for practitioners, namely athletic performance. Furthermore, our data provided some preliminary insights into the interference hypothesis in youth.

The available data from the literature concerning underlying physiological mechanisms such as measures of neuromuscular activity or exercise economy were limited. While there are indications that the responses to CT are greater in adult female compared with male athletes (Barnes et al., 2013), this remains unresolved in young athletes due to insufficient data. In addition, we were not able to clarify whether interference effects in strength adaptations are more pronounced in adolescents compared with children, again due to a lack of data. Moreover, our conclusions are limited because the included studies did not control for training volume between CT and single-mode ST or ET (but see Mikkola et al., 2007). Thus, the observed effects in favor of CT could also be the result of additional training volume. A final limitation was the “fair” methodological quality due to the difficulty in blinding athletes to intervention and investigators to participants’ group assignment.

Recommendations

Based on present and past data (Faigenbaum et al., 2016; Lesinski et al., 2016), we recommend that practitioners and coaches

include both ST and ET to increase endurance performance in young athletes and to improve physical fitness in non-athletic youth. Both ET and CT could be effective to improve athletic performance in children. However, from a long-term athletic development perspective (Lloyd and Oliver, 2012), CT appears to be favored. CT allows youth to become familiar with ST and learn proper exercise technique from which they may profit at a later age. Coaches should also be aware that sequencing ET and ST within CT affects performance outcomes in young (postpubertal) adolescent athletes. Adhering to previous recommendations could help minimize interference effects (García-Pallarés and Izquierdo, 2011; Baar, 2014; Murlasits et al., 2017). The ST→ET sequence may produce the best results in adolescent athletes but the order does not seem to differentially affect training adaptations in children. This recommendation requires confirmation, as it was based on data from two studies examining young soccer players age 13 and 17 y.

Future studies on CT should control training volume so that any potentiating or interfering effect is not due to differences in training volume between groups. There is a need to report measures quantifying not only athletic performance but also measures that can help understand the underlying processes such as exercise economy or muscle hypertrophy. Biological age should always be reported given their relevance to training adaptations. Finally, data and statistical analyses should be reported separately for boys and girls so that any sex effect on training adaptations can be determined.

CONCLUSIONS

The current systematic review and meta-analysis examined the effects of CT on outcomes of physical fitness and athletic performance in youth. We found at worst no interfering but perhaps a potentiating effect of CT compared with ST or ET alone in endurance athletes age 10 to 18 years and non-athletic youth age 10 to 13 years. A potentiating effect of CT was most visible in adolescent endurance athletes. Preliminary findings from this meta-analysis suggest that CT improves lower body power more than ST in non-athletic youth. This is in contrast to the adult literature and implies an age-dependent interference effect of CT on measures of muscle power. When designing CT programs, training status, sequencing effects, and biological age are factors to consider in future studies.

AUTHOR CONTRIBUTIONS

All authors listed have made a substantial, direct and intellectual contribution to the work, and approved it for publication.

FUNDING

This study is part of the research project Strength Training in Youth Athletes that was funded by the German Federal Institute of Sport Science (ZMVI1-08190114-18). In addition, we acknowledge the support of the Deutsche

Forschungsgemeinschaft (DFG) and Open Access Publishing Fund of University of Potsdam, Germany. The funders had no role in study design, data collection and analysis, decision to publish, or preparation of the manuscript.

REFERENCES

- Aagaard, P., and Andersen, J. L. (2010). Effects of strength training on endurance capacity in top-level endurance athletes. *Scand. J. Med. Sci. Sports* 20, 39–47. doi: 10.1111/j.1600-0838.2010.01197.x
- Aagaard, P., Andersen, J. L., Bennekou, M., Larsson, B., Olesen, J. L., Cramer, R., et al. (2011). Effects of resistance training on endurance capacity and muscle fiber composition in young top level cyclists. *Scand. J. Med. Sci. Sports* 21, e298–e307. doi: 10.1111/j.1600-0838.2010.01283.x
- Alves, A. R., Marta, C. C., Neiva, H. P., Izquierdo, M., and Marques, M. C. (2016). Concurrent training in prepubescent children: the effects of 8 weeks of strength and aerobic training on explosive strength and VO_2max . *J. Strength Cond. Res.* 30, 2019–2032. doi: 10.1519/JSC.0000000000001294
- Amaro, N. M., Marinho, D. A., Marques, M. C., Batalha, N. P., and Morouço, P. G. (2017). Effects of dry-land strength and conditioning programs in age group swimmers. *J. Strength Cond. Res.* 31, 2447–2454. doi: 10.1519/JSC.0000000000001709
- Aspenes, S., Kjendlie, P. L., Hoff, J., and Helgerud, J. (2009). Combined strength and endurance training in competitive swimmers. *J. Sports Sci. Med.* 8, 357–365.
- Baar, K. (2014). Using molecular biology to maximize concurrent training. *Sports Med.* 44, S117–S125. doi: 10.1007/s40279-014-0252-0
- Balsalobre-Fernández, C., Santos-Concejero, J., and Grivas, G. V. (2016). Effects of strength training on running economy in highly trained runners: a systematic review with meta-analysis of controlled trials. *J. Strength Cond. Res.* 30, 2361–2368. doi: 10.1519/JSC.0000000000001316
- Barnes, K. R., Hopkins, W. G., McGuigan, M. R., Northuis, M. E., and Kilding, A. E. (2013). Effects of resistance training on running economy and cross-country performance. *Med. Sci. Sports Exerc.* 45, 2322–2331. doi: 10.1249/MSS.0b013e31829af603
- Behm, D. G. (1995). Neuromuscular implications and applications of resistance training. *J. Strength Cond. Res.* 9, 264–274.
- Blagrove, R. C., Howe, L. P., Cushion, E. J., Spence, A., Howatson, G., Pedlar, C. R., et al. (2018). Effects of strength training on postpubertal adolescent distance runners. *Med. Sci. Sports Exerc.* 50, 1224–1232. doi: 10.1249/MSS.0000000000001543
- Bluet, K. A., De Ste Croix, M., and Lloyd, R. S. (2015). A preliminary investigation into concurrent aerobic and resistance training in youth runners. *Isokinet. Exerc. Sci.* 23, 77–85. doi: 10.3233/IES-150567
- Bompa, T., and Buzzichelli, C. A. (2015). *Periodization Training for Sports*. Champaign, IL: Human Kinetics.
- Carlsson, T., Wedholm, L., Nilsson, J., and Carlsson, M. (2017). The effects of strength training versus ski-ergometer training on double-poling capacity of elite junior cross-country skiers. *Eur. J. Appl. Physiol.* 117, 1523–1532. doi: 10.1007/s00421-017-3621-1
- Coffey, V. G., and Hawley, J. A. (2017). Concurrent exercise training: do opposites distract? *J. Physiol.* 595, 2883–2896. doi: 10.1113/JP272270
- Cohen, J. (1988). *Statistical Power Analysis for the Behavioral Sciences, 2nd Edn.* Hillsdale, NJ: Erlbaum.
- Deeks, J. J., and Higgins, J. P. T. (2010). *Statistical Algorithms in ReviewManager 5. Statistical Methods of The Cochrane Collaboration*. Available online at: <https://training.cochrane.org/handbook/statistical-methods-revman5>
- Denadai, B. S., de Aguiar, R. A., de Lima, L. C., Greco, C. C., and Caputo, F. (2017). Explosive training and heavy weight training are effective for improving running economy in endurance athletes: a systematic review and meta-analysis. *Sports Med.* 47, 545–554. doi: 10.1007/s40279-016-0604-z
- Docherty, D., and Sporer, B. (2000). A proposed model for examining the interference phenomenon between concurrent aerobic and strength training. *Sports Med.* 30, 385–394. doi: 10.2165/00007256-200030060-00001
- Eddens, L., van Someren, K., and Howatson, G. (2017). The role of intra-session exercise sequence in the interference effect: a systematic review with meta-analysis. *Sports Med.* 48, 177–188. doi: 10.1007/s40279-017-0784-1
- Egan-Shuttler, J. D., Edmonds, R., Eddy, C., O'Neill, V., and Ives, S. J. (2017). The effect of concurrent plyometric training versus submaximal aerobic cycling on rowing economy, peak power, and performance in male high school rowers. *Sports Med. Open.* 3, 3–7. doi: 10.1186/s40798-017-0075-2
- Enright, K., Morton, J., Iga, J., and Drust, B. (2015). The effect of concurrent training organisation in youth elite soccer players. *Eur. J. Appl. Physiol.* 115, 2367–2381. doi: 10.1007/s00421-015-3218-5
- Faigenbaum, A. D., Kraemer, W. J., Blimkie, C. J. R., Jeffreys, I., Micheli, L. J., Nitka, M., et al. (2009). Youth resistance training: updated position statement paper from the national strength and conditioning association. *J. Strength Cond. Res.* 23, S60–S79. doi: 10.1519/JSC.0b013e31819df407
- Faigenbaum, A. D., Lloyd, R. S., MacDonald, J., and Myer, G. D. (2016). Citius, altius, fortius: beneficial effects of resistance training for young athletes: narrative review. *Br. J. Sports Med.* 50, 3–7. doi: 10.1136/bjsports-2015-094621
- Fleck, S. J., and Dean, L. S. (1987). Resistance-training experience and the pressor response during resistance exercise. *J. Appl. Physiol.* 63, 116–120.
- Fleck, S. J., and Kraemer, W. J. (2014). *Designing Resistance Training Programs, 4th Edn.* Leeds: Human Kinetics.
- Fyfe, J. J., and Loenneke, J. P. (2018). Interpreting adaptation to concurrent compared with single-mode exercise training: some methodological considerations. *Sports Med.* 48, 289–297. doi: 10.1007/s40279-017-0812-1
- García-Pallarés, J., and Izquierdo, M. (2011). Strategies to optimize concurrent training of strength and aerobic fitness for rowing and canoeing. *Sports Med.* 41, 329–343. doi: 10.2165/11539690-000000000-00000
- Garrido, N., Marinho, D. A., Reis, V. M., van den Tillaar, R., Costa, A. M., Silva, A. J., et al. (2010). Does combined dry land strength and aerobic training inhibit performance of young competitive swimmers? *J. Sports Sci. Med.* 9, 300–310.
- Girold, S., Maurin, D., Dugué, B., Chatard, J. C., and Millet, G. (2007). Effects of dry-land vs. resisted- and assisted-sprint exercises on swimming sprint performances. *J. Strength Cond Res.* 21, 599–605. doi: 10.1519/R-19695.1
- Granacher, U., Goesele, A., Roggo, R., Wischer, T., Fischer, S., Zuerny, C., et al. (2011). Effects and mechanisms of strength training in children. *Int. J. Sports Med.* 32, 357–364. doi: 10.1055/s-0031-1271677
- Häkkinen, K., Mero, A., and Kauhane, H. (1989). Specificity of endurance, sprint and strength training on physical performance capacity in young athletes. *J. Sports Med. Phys. Fitness.* 29, 27–35.
- Hedges, L. V., and Olkin, I. (1985). *Statistical Methods for Meta Analysis*. Orlando, FL: Academic Press.
- Hickson, R. C. (1980). Interference of strength development by simultaneously training for strength and endurance. *Eur. J. Appl. Physiol. Occup. Physiol.* 45, 255–263. doi: 10.1007/BF00421333
- Higgins, J. P., Thompson, S. G., Deeks, J. J., and Altman, D. G. (2003). Measuring inconsistency in meta-analyses. *Br. Med. J.* 327, 557–560. doi: 10.1136/bmj.327.7414.557
- Konopka, A. R., and Harber, M. P. (2014). Skeletal muscle hypertrophy after aerobic exercise training. *Exerc. Sport Sci. Rev.* 42, 53–61. doi: 10.1249/JES.0000000000000007
- Legerlotz, K., Marzilger, R., Bohm, S., and Arampatzis, A. (2016). Physiological adaptations following resistance training in youth athletes: a narrative review. *Pediatr. Exerc. Sci.* 28, 501–520. doi: 10.1123/pes.2016-0023
- Lesinski, M., Prieske, O., and Granacher, U. (2016). Effects and dose-response relationships of resistance training on physical performance in youth athletes: a systematic review and meta-analysis. *Br. J. Sports Med.* 50, 781–795. doi: 10.1136/bjsports-2015-095497

ACKNOWLEDGMENTS

The authors would like to thank Alina Schmelcher and Pavlo Sonnemann for their help with the extraction of the data.

- Lloyd, R. S., and Oliver, J. L. (2012). The youth physical development model: a new approach to long-term athletic development. *Strength Cond. J.* 34, 61–72. doi: 10.1519/SSC.0b013e31825760ea
- Maher, C. G., Sherrington, C., Herbert, R. D., Moseley, A. M., and Elkins, M. (2003). Reliability of the PEDro scale for rating quality of randomized controlled trials. *Phys. Ther.* 83, 713–721. doi: 10.1093/ptj/83.8.713
- Makhlouf, I., Castagna, C., Manzi, V., Laurencelle, L., Behm, D. G., and Chaouachi, A. (2016). Effect of sequencing strength and endurance training in young male soccer players. *J. Strength Cond. Res.* 30, 841–850. doi: 10.1519/JSC.0000000000001164
- Marta, C., Marinho, D. A., Barbosa, T. M., Izquierdo, M., and Marques, M. C. (2013). Effects of concurrent training on explosive strength and vo2max in prepubescent children. *Int. J. Sports Med.* 34, 888–896. doi: 10.1055/s-0033-1333695
- Mikkola, J., Rusko, H., Nummela, A., Pollari, T., and Häkkinen, K. (2007). concurrent endurance and explosive type strength training improves neuromuscular and anaerobic characteristics in young distance runners. *Int. J. Sports Med.* 28, 602–611. doi: 10.1055/s-2007-964849
- Moher, D., Liberati, A., Tetzlaff, J., Altman, D. G., The Prisma Group. (2010). Preferred reporting items for systematic reviews and meta-analyses: the Prisma statement. *Int. J. Surg.* 8, 336–341. doi: 10.1016/j.ijsu.2010.02.007
- Murlasits, Z., Kneffel, Z., and Thalib, L. (2017). The physiological effects of concurrent strength and endurance training sequence: a systematic review and meta-analysis. *J. Sports Sci.* 36, 1–8. doi: 10.1080/02640414.2017.1364405
- Ozmun, J. C., Mikesky, A. E., and Surburg, P. R. (1994). Neuromuscular adaptations following prepubescent strength training. *Med. Sci. Sports Exerc.* 26, 510–514.
- Potdevin, F. J., Alberty, M. E., Chevutschi, A., Pelayo, P., and Sidney, M. C. (2011). Effects of a 6-week plyometric training program on performances in pubescent swimmers. *J. Strength Cond. Res.* 25, 80–86. doi: 10.1519/JSC.0b013e318181fef720
- Rønnestad, B. R., Hansen, E. A., and Raastad, T. (2012). High volume of endurance training impairs adaptations to 12 weeks of strength training in well-trained endurance athletes. *Eur. J. Appl. Physiol.* 112, 1457–1466. doi: 10.1007/s00421-011-2112-z
- Rønnestad, B. R., and Mujika, I. (2014). Optimizing strength training for running and cycling endurance performance: a review. *Scand. J. Med. Sci. Sports.* 24, 603–612. doi: 10.1111/sms.12104
- Santos, A. P., Marinho, D. A., Costa, A. M., Izquierdo, M., and Marques, M. C. (2011). The effects of concurrent resistance and endurance training follow a specific detraining cycle in young school girls. *J. Human Kinetics* 29, 93–103. doi: 10.2478/v10078-011-0064-3
- Santos, A. P., Marinho, D. A., Costa, A. M., Izquierdo, M., and Marques, M. C. (2012). The effects of concurrent resistance and endurance training follow a detraining period in elementary school students. *J. Strength Cond. Res.* 26, 1708–1716. doi: 10.1519/JSC.0b013e318234e872
- Spurrs, R. W., Murphy, A. J., and Watsford, M. L. (2003). The effect of plyometric training on distance running performance. *Eur. J. Appl. Physiol.* 89, 1–7. doi: 10.1007/s00421-002-0741-y
- Sunde, A., Støren, Ø., Bjerkaas, M., Larsen, M. H., Hoff, J., and Helgerud, J. (2010). Maximal strength training improves cycling economy in competitive cyclists. *J. Strength Cond. Res.* 24, 2157–2165. doi: 10.1519/JSC.0b013e3181aeb16a
- Tang, J. E., Hartman, J. W., and Phillips, S. M. (2006). Increased muscle oxidative potential following resistance training induced fibre hypertrophy in young men. *Appl. Physiol. Nutr. Metabol.* 31, 495–501. doi: 10.1139/h06-026
- The Cochrane Collaboration (2014). *Review Manager (RevMan) [Computer program]. Version 5.3.5.* Copenhagen: The Nordic Cochrane Centre.
- University of York, Centre for Reviews and Dissemination. (2009). *Systematic Reviews: Crd's Guidance for Undertaking Reviews in Health Care.* York, UK: Centre for Reviews and Dissemination.
- Viru, A., Loko, J., Harro, M., Volver, A., Laaneots, L., and Viru, M. (1999). Critical periods in the development of performance capacity during childhood and adolescence. *Eur. J. Phy. Educ.* 4, 75–119. doi: 10.1080/1740898990040106
- Weston, M., Hibbs, A. E., Thompson, K. G., and Spears, I. R. (2015). Isolated core training improves sprint performance in national-level junior swimmers. *Int. J. Sports Physiol. Perform.* 10, 204–210. doi: 10.1123/ijpspp.2013-0488
- WHO (2010). *Global Recommendations on Physical Activity for Health.* Geneva: WHO Press.
- Williams, C. A. (2016). Trainability of young athletes: short-term goals or long-term mission? *Pediatr. Exerc. Sci.* 28, 485–487. doi: 10.1123/pes.2016-0215
- Wilson, J. M., Marin, P. J., Rhea, M. R., Wilson, S. M., Loenneke, J. P., and Anderson, J. C. (2012). Concurrent training: a meta-analysis examining interference of aerobic and resistance exercises. *J. Strength Cond. Res.* 26, 2293–2307. doi: 10.1519/JSC.0b013e31823a3e2d

Conflict of Interest Statement: The authors declare that the research was conducted in the absence of any commercial or financial relationships that could be construed as a potential conflict of interest.

Copyright © 2018 Gäbler, Prieske, Hortobágyi and Granacher. This is an open-access article distributed under the terms of the Creative Commons Attribution License (CC BY). The use, distribution or reproduction in other forums is permitted, provided the original author(s) and the copyright owner(s) are credited and that the original publication in this journal is cited, in accordance with accepted academic practice. No use, distribution or reproduction is permitted which does not comply with these terms.