



Humanwissenschaftliche Fakultät

Anja Carlsohn | Friederike Scharhag-Rosenberger | Michael Cassel
Frank Mayer

Resting Metabolic Rate in Elite Rowers and Canoeists: Difference between Indirect Calorimetry and Prediction

Suggested citation referring to the original publication:
Annals of nutrition & metabolism 58(3) (2011), pp. 239–244
DOI <http://dx.doi.org/10.1159/000330119>
ISSN (print) 0250-6807
ISSN (online) 1421-9697

Postprint archived at the Institutional Repository of the Potsdam University in:
Postprints der Universität Potsdam
Humanwissenschaftliche Reihe ; 329
ISSN 1866-8364
<http://nbn-resolving.de/urn:nbn:de:kobv:517-opus4-399837>

Resting Metabolic Rate in Elite Rowers and Canoeists: Difference between Indirect Calorimetry and Prediction

Anja Carlsohn · Friederike Scharhag-Rosenberger · Michael Cassel · Frank Mayer

University Outpatient Clinic Potsdam, Sports Medicine and Sports Orthopaedics, University of Potsdam, Potsdam, Germany

Key Words

Energy requirement · Calorimetry · Fat-free mass · Nutritional counseling · Athletes

Abstract

Background: Athletes may differ in their resting metabolic rate (RMR) from the general population. However, to estimate the RMR in athletes, prediction equations that have not been validated in athletes are often used. The purpose of this study was therefore to verify the applicability of commonly used RMR predictions for use in athletes. **Methods:** The RMR was measured by indirect calorimetry in 17 highly trained rowers and canoeists of the German national teams (BMI 24 ± 2 kg/m², fat-free mass 69 ± 15 kg). In addition, the RMR was predicted using Cunningham (CUN) and Harris-Benedict (HB) equations. A two-way repeated measures ANOVA was calculated to test for differences between predicted and measured RMR ($\alpha = 0.05$). The root mean square percentage error (RMSPE) was calculated and the Bland-Altman procedure was used to quantify the bias for each prediction. **Results:** Prediction equations significantly underestimated the RMR in males ($p < 0.001$). The RMSPE was calculated to be 18.4% (CUN) and 20.9% (HB) in the entire group. The bias was 133 kcal/24 h for CUN and 202 kcal/24 h for HB. **Conclusions:**

Predictions significantly underestimate the RMR in male heavyweight endurance athletes but not in females. In athletes with a high fat-free mass, prediction equations might therefore not be applicable to estimate energy requirements. Instead, measurement of the resting energy expenditure or specific prediction equations might be needed for the individual heavyweight athlete.

Copyright © 2011 S. Karger AG, Basel

Introduction

To estimate the energy demands of an individual, knowledge of physical activity-related energy expenditure and the individual's resting metabolic rate (RMR) is required. While physical activity-related energy expenditure is the most variable factor of total energy expenditure, the RMR is its largest component [1]. To estimate the RMR, several different prediction equations have been developed [2]. However, there is no standard prediction equation that fits all individuals, and the characteristics of a population need to be considered [3, 4].

One characteristic affecting energy expenditure is the fat-free mass (FFM), which accounts for about 50–80% of the individual variability in RMR [1, 5]. However, RMR in

individuals of the same FFM may vary by approximately 3 MJ/day (about 715 kcal/24 h), which suggests that additional components substantially influence the RMR [6]. For example, Illner et al. [7] reported that metabolically active organs contribute considerably to the RMR. In addition, the RMR might be influenced by exercise-induced activation of the sympathetic nervous system [8]. Thus, besides chronic, exercise-induced changes in body composition, the RMR might be modulated by regular physical activity itself [1]. Currently, prediction equations developed by Cunningham [9] and Harris and Benedict [10] are recommended by the American College of Sports Medicine (ACSM) to estimate the RMR in athletes [11]. Cunningham's prediction model (CUN) comprises FFM; thus, differences in body composition between athletes and nonathletes are considered. In contrast, the prediction equations by Harris and Benedict (HB) do not include FFM, but do include total body weight and gender. As shown by Thompson and Manore [12], the Cunningham equation is highly accurate in endurance athletes. However, anthropometric data such as height, weight, and FFM may considerably differ in elite athletes, depending on the kind of sport [13], and thus affect the applicability of commonly used RMR prediction equations. For example, elite heavyweight rowers have been shown to have a significantly larger total body mass and FFM compared to nonathletes [14]. Neither HB nor CUN were developed for the athletic population; rather, they were developed in healthy untrained subjects (CUN, $n = 223$) and adults and a small number of infants (HB, $n = 241$). In addition, HB and CUN were developed in 1918 and 1980, respectively [9, 15]. In the meantime, many prediction equations have become available, and some of them might be regarded as more appropriate. For example, de Lorenzo et al. [16] have established an RMR prediction equation for male athletes. Nevertheless, ACSM recommends the Harris-Benedict or Cunningham equation, though they have not been developed for the athletic population and the accuracy of RMR prediction models has not been tested in this specific athletic population with a very high FFM. Thus, the applicability of both the Cunningham equation and the Harris-Benedict equation in athletes with a very high FFM is questionable.

Therefore, the purpose of this study was to evaluate the applicability of commonly used RMR prediction equations in highly trained, heavyweight endurance athletes. It was hypothesized that prediction equations which do not consider body composition and were not developed for use in athletes will substantially bias the RMR in individuals with a remarkably high FFM.

Table 1. Participants' characteristics

	Females	Males
Age, years	23.3 ± 3.0	23.0 ± 5.0
Weight, kg	69.3 ± 11.0	92.9 ± 10.0*
Height, kg	175.0 ± 7.0	193.0 ± 7.0*
BMI	22.5 ± 2.0	25.0 ± 2.0
Body fat, %	18.5 ± 4.0	12.7 ± 2.0
FFM, kg	56.1 ± 7.0	81.0 ± 8.0*
Duration of training, min/day	152.0 ± 41.0	133.0 ± 88
VO _{2max} , ml/min/kg	43.0 ± 2.5	57.0 ± 4.5

Data are presented as means ± SD.

* Significantly different from females.

Materials and Methods

Participants

Seventeen highly trained rowing (3 males and 5 females) and canoe racing (5 males and 4 females) athletes of the German national teams were enrolled into this study (age 23 ± 4 years, BMI 24 ± 2 kg/m², FFM 72 ± 14 kg). The average number of training sessions per week was 15.9 ± 3.6 for males and 18.3 ± 2.9 for females. Detailed subjects' characteristics are shown in table 1.

Individuals who were smokers or persons diagnosed with hypo- or hyperthyroidism [17] were excluded from the study to avoid possible influences on the RMR. All participants were encouraged to keep their usual eating habits during the 2 weeks before the study. Additionally, participants were asked about weight changes during the last 2 months before the start of the study. Weight changes had to be less than ±4.5 kg [18] to avoid effects of restrained eating [19, 20] or overnutrition [21] when measuring the RMR; otherwise volunteers were excluded from the study. A total of 19 athletes volunteered to participate in the study, 17 of which were finally included. All participants gave written informed consent after the study had been approved by the local ethics committee.

Study Design

The study was conducted in a cross-sectional design. Ahead of experimental procedures, inclusion criteria were verified by phone calls using a checklist. Participants visited the laboratory on two separate days. On the first day a medical check including a fasting blood sample for analysis of thyroid-stimulating hormone, ferritin, and blood counts to identify subjects with iron deficiency or endocrinal disturbances was conducted. The blood parameters of all participants were within reference values. Medical prescriptions were checked during anamnesis by a physician, and no medications that influence the RMR were reported. Six out of 8 females reported contraceptive use, which means RMR variance due to the menstrual cycle is negligible in these participants [22]. Therefore, the menstrual state of female athletes was not controlled for in measuring the RMR. To characterize the fitness level of the athletes, the maximum oxygen consumption (VO_{2max}) was measured during an incremental treadmill test as described elsewhere [23]. On the second day, the RMR was measured and anthropometric data were collected. All tests were per-

formed within 12 weeks to avoid seasonal variance of the RMR as described by others [24].

Anthropometric Measurements

Participants arrived between 6:00 and 7:30 a.m. at the laboratory and rested for 10 min in a sitting position before the RMR was measured. Anthropometric measurements (body height, body weight, and skin fold thickness) were conducted in a fasted state (≥ 12 h) with the subjects wearing underwear. Skin fold thickness was measured by the same experienced examiner, and the coefficient of variance (CV) was calculated to be 4.6% in a previous pilot study. Body fat was estimated via the 10-site skin fold method of Parizkova and Buzkova [25] using a Lange caliper (DKSH Ltd., Zürich, Switzerland). The FFM was calculated from the whole body mass and the body fat mass.

RMR Measurements

All participants were instructed to minimize movement after awaking and before calorimetry, and they were asked to refrain from alcohol [26] or caffeine consumption [27, 28] and vigorous exercise the day before RMR measurements [1]. Low-intensity training was allowed the day before calorimetry as interruption of habitual training by cessation of exercise may substantially affect the RMR in highly trained individuals [29]. The RMR was measured the morning after a restful night's sleep in a silent room with an ambient temperature of 22–25°C while the participants rested in a supine position [4]. The experimental conditions were exactly standardized for each subject by means of a checklist. The gas exchange was measured for 30.9 ± 4 min using a face mask device (ZAN 600 CPET; nSpire Health Group, Oberthulba, Germany). Calibrations of flow and gas analyzers were performed before each measurement using a 1-liter syringe, room air (20.94 vol% O₂ and 0.04 vol% CO₂), and a standard gas (15.90 \pm 0.32 vol% O₂ and 4.99 \pm 0.10 vol% CO₂; Air Liquid, Krefeld, Germany). Breath-by-breath measurements were conducted using an amperometric solid electrolyte sensor for oxygen measurement and an infrared sensor for CO₂ measurements. The oxygen uptake (VO₂) and respiratory exchange ratio were analyzed within the last 20 min of the resting period and during a minimum of 5 consecutive minutes in steady-state conditions. Steady-state was defined as intervals where the average minute oxygen consumption (VO₂) and carbon dioxide production (VCO₂) changes by $<10\%$ and the average respiratory exchange ratio changes by $<5\%$ [30]. The RMR was determined using the Weir equation [31]. Using these standardized RMR measurement procedures, the CV was calculated to be 2.1% in a pilot test-retest study in our laboratory.

RMR Predictions

For each subject, the RMR was predicted using standard equations by Cunningham [9] and Harris and Benedict [10] as stated below:

Cunningham:

$$\text{RMR (kcal/24 h)} = 500 + 22 \times \text{FFM (kg)}$$

Harris and Benedict:

$$\text{Females: RMR (kcal/24 h)} = 655.96 + 1.850 \times \text{H (cm)} + 9.563 \times \text{BW (kg)} - 4.676 \times \text{A (years)}$$

$$\text{Males: RMR (kcal/24 h)} = 66.473 + 5.003 \times \text{H (cm)} + 13.752 \times \text{BW (kg)} - 6.755 \times \text{A (years)}$$

where BW = body weight; H = height, and A = age.

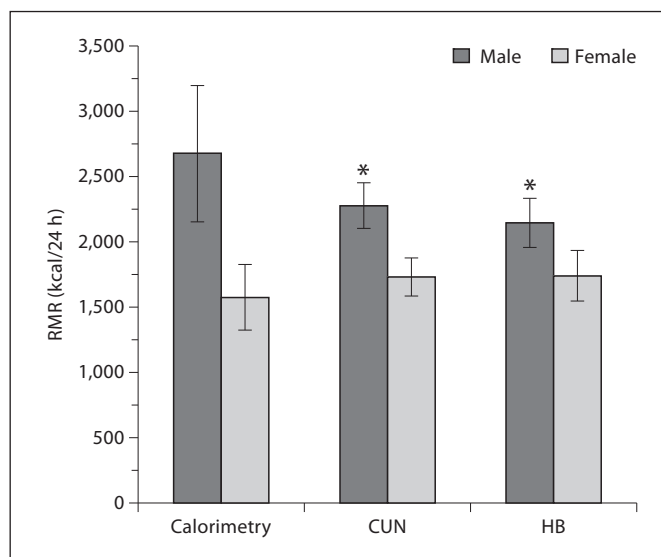


Fig. 1. Measured (calorimetry) and predicted (CUN and HB) RMR in males and females. *Results are significantly different from calorimetry.

Data Analysis

Data were analyzed for the entire group and with respect to gender and presented as means \pm standard deviation (SD). As a normal distribution was present for all dependent variables (Shapiro-Wilk test), parametric tests were chosen. To estimate the relative difference between predicted and measured RMR, the root mean square percentage error (RMSPE) was calculated for each equation. Two-factorial ANOVA with repeated measures was used to test for statistically significant differences between predicted and measured RMR (factor 1: result of measurement or prediction; factor 2: gender). For post hoc comparisons, the Scheffé test was used. $p < 0.05$ for the α -error was considered significant. The Bland-Altman procedure was used to identify the bias and to evaluate the precision of the prediction equations [32, 33]. The bias was calculated as the mean difference between a prediction equation and the measurement. The SD of the mean (the range within which 95% of the differences between the prediction and the measurement will lie) served to evaluate the precision of a prediction equation (95% limits of agreement; LOA). A regression analysis was performed to identify a proportional bias [34].

Results

For females, the predicted RMR using either CUN ($1,734 \pm 147$ kcal/24 h, $p = 0.831$) or HB ($1,737 \pm 200$ kcal/24 h, $p = 0.818$) tended to be higher than the measured RMR ($1,577 \pm 253$ kcal/24 h or 28.2 ± 4.0 kcal/kg FFM/24 h) but was not statistically different from the measured RMR. In males, the predicted RMR was significantly lower for both CUN ($2,260 \pm 181$ kcal/24 h, $p = 0.005$) and HB ($2,133 \pm 188$ kcal/24 h, $p < 0.001$) com-

Fig. 2. Mean difference between measured and predicted RMR using the Cunningham equation.

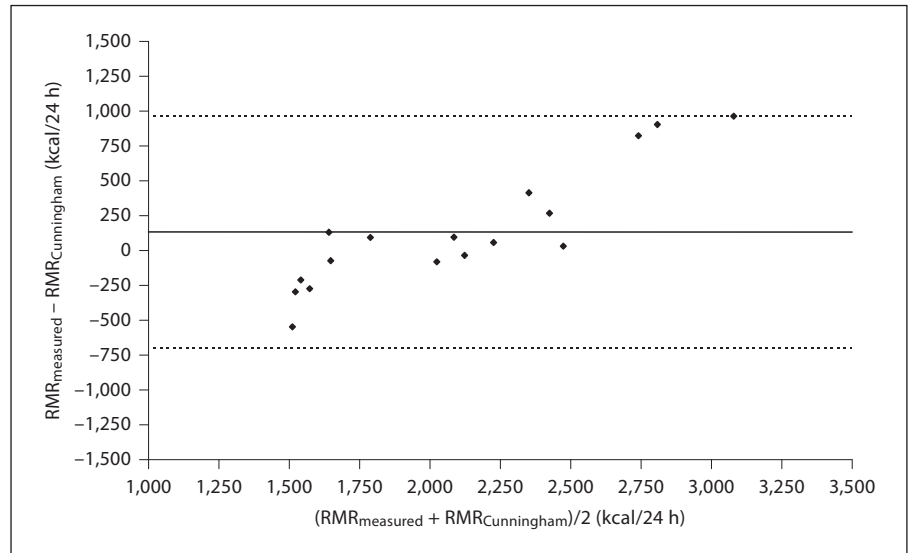
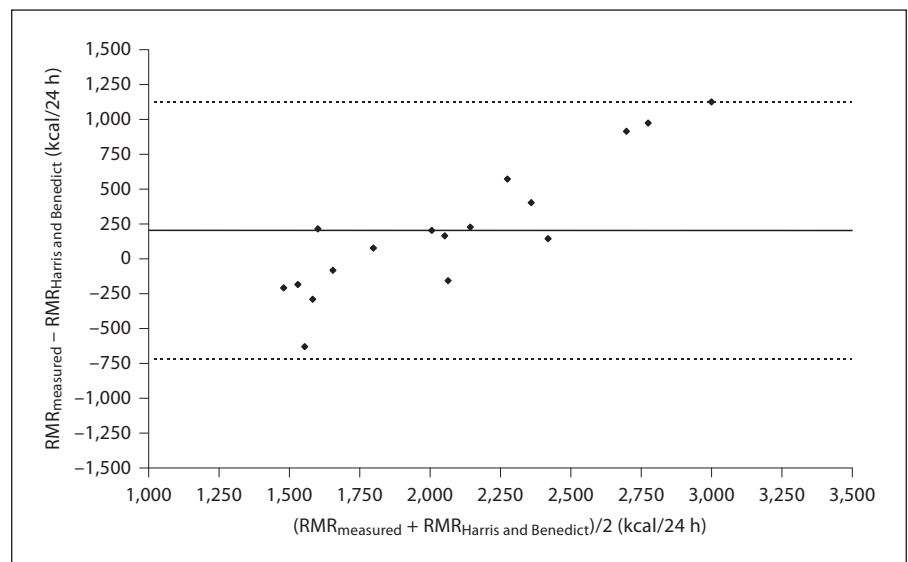


Fig. 3. Mean difference between measured and predicted RMR using the Harris-Benedict equation.



pared to the measured RMR ($2,675 \pm 526$ kcal/24 h or 32.8 ± 4.0 kcal/kg FFM/24 h).

In general, prediction equations significantly underestimated the RMR in males ($p < 0.001$ for both prediction equations) but not in females ($p > 0.05$; fig. 1). The Bland-Altman analysis indicated that prediction equations underestimate the RMR at high values (fig. 2, 3).

Cunningham Equation

The Cunningham equation significantly underestimated the RMR in males ($p = 0.005$) but not in females ($p = 0.580$). The RMSPE for the entire group was 18.4%, and it was 19.8% for males and 17.0% females, respective-

ly. The mean difference between CUN and the measurements was 133 kcal/24 h. The LOA ranged from -697 kcal/24 h to 964 kcal/24 h (fig. 2).

Harris-Benedict Equation

Using the Harris-Benedict equation, the RMR in males was significantly underestimated ($p < 0.001$). No difference between the measured and predicted RMR was observed in female athletes ($p = 0.559$). The RMSPE for the entire group was 20.9%, and it was 21.5% for males and 20.4% females, respectively. The bias was calculated as 202 kcal/24 h, and the LOA were -721 kcal/24 h and $1,124$ kcal/24 h (fig. 3).

Discussion

The study was conducted to assess the applicability of commonly used RMR prediction equations in highly trained, heavyweight endurance athletes. In general, prediction equations significantly underestimated the RMR in male athletes, whereas no differences between measured and predicted RMR were observed in female athletes. This effect might be attributed to the remarkable size of the FFM in male elite rowers and canoeists in the present study (81.0 ± 8.0 kg FFM and $12.7 \pm 2.0\%$ body fat for males and 56.1 ± 7.0 kg FFM and $18.5 \pm 4.0\%$ body fat for females). The observed total body weight of 92.9 ± 10 kg and average FFM of 81.0 ± 8 kg in male participants is much higher than FFM reported in other RMR measurement studies where the mean FFM typically ranges from 38 to 62 kg in sedentary or moderately active individuals [26, 35, 36]. In contrast, both the total body weight and the FFM in female athletes were not obviously higher compared to values in the literature. As previously shown, the prediction error is higher when the FFM is either decreased or elevated. Mueller et al. [35] reported that commonly used RMR prediction equations are biased in both obese and underweight subjects, with underestimation at high RMR and overestimation at low RMR. Therefore, RMR equations used to predict the RMR in athletes should consider anthropometric differences between the general population and athletes.

A bias ranging from 133 kcal/24 h (CUN) to 202 kcal/24 h (HB) was observed when the RMR was predicted in athletes. The question of what is an acceptable bias needs to be evaluated from a practical perspective and cannot be answered solely by using statistical measures [32]. An underestimation of 133–202 kcal/day seems to be negligible in theory but may be of practical importance if an athlete tries to gain weight with a combined schedule of exercise training and a fine-tuned diet sheet.

For example, if the RMR is underestimated by 200 kcal/24 h as observed in HB, the individual's energy requirement will be underestimated by approximately 360–460 kcal/day as the physical activity level (which serves to calculate total energy requirement from the RMR as $\text{RMR} \times \text{physical activity level}$) ranges from 1.8–2.3 in highly trained athletes, which might be of importance during dietary counseling of the individual [11]. A daily caloric deficiency of 460 kcal would result in a monthly body weight loss of approximately 1.5–1.8 kg if not corrected by an increased dietary intake, for example

with an additional large cereal bowl with milk or two stuffed rolls.

However, a high but consistent bias would be a minor concern if the SD of the mean difference between the measurement and the prediction is small (i.e. a narrow range of the 95% LOA). In this case, predictions may be adjusted by subtracting the bias [32]. Nevertheless, the LOA are high in both prediction equations, indicating that relevant over- or underestimation of the RMR may occur in the individual. In addition, the proportional bias observed in the tested prediction equations indicates that underestimation of the RMR is more likely to occur at high RMR. Results of the present study indicate an obvious proportional bias with underestimation of the RMR in athletes with a high RMR and overestimation of the RMR in athletes with a low RMR. However, a proportional bias in Bland-Altman plots may also be an artifact of the plotting procedure, and regression analysis is needed to identify a proportional bias [34]. When performing a regression analysis, the slope for both prediction equations tested against calorimetry is not close to 1 and the intercept is not close to zero, indicating that the proportional bias observed in athletes is veritable.

As FFM accounts for up to 80% of the RMR [1, 5] it may be suggested that underestimation occurs in individuals with a high FFM and low body fat content. This may also explain why in males ($12.7 \pm 2.0\%$ body fat) prediction equations underestimated the RMR while in females ($18.5 \pm 4.0\%$ body fat) no statistical significant difference between measured and predicted RMR was observed. It may be concluded that in athletes with a low body fat percentage the RMR may be significantly underestimated when using CUN or HB to estimate the RMR.

However, it needs to be emphasized that the athletic population presented in this study consisted of elite rowing and canoeing athletes of the German national teams with a large body size and FFM. In other athletic populations where the body size and FFM do not differ from those of the general population, differences in predicted and measured RMR might be negligible in the daily routine of sports nutrition.

Conclusion

The predicted RMR in heavyweight endurance athletes are significantly biased by approximately 150–200 kcal/24 h when standard equations suggested by the

ACSM are used [11]. The mean difference between measured and predicted RMR was higher at high values of measurement, indicating that underestimation of the RMR is more likely to occur at high RMR. In athletes

with a high FFM, prediction equations might therefore not be applicable to estimate energy requirements. Instead, measurement of the resting energy expenditure might be needed in the individual heavyweight athlete.

References

- Speakman JR, Selman C: Physical activity and resting metabolic rate. *Proc Nutr Soc* 2003;62:621–634.
- Wang Z, Heshka S, Zhang K, Boozer CN, Heymsfield SB: Resting energy expenditure: systematic organization and critique of prediction methods. *Obes Res* 2001;9:331–336.
- Korth O, Bosity-Westphal A, Zschoche P, Gluer CC, Heller M, Muller MJ: Influence of methods used in body composition analysis on the prediction of resting energy expenditure. *Eur J Clin Nutr* 2007;61:582–589.
- FAO/WHO/UNU Expert Consultation: Human energy requirements: scientific background papers from the Joint FAO/WHO/UNU Expert Consultation, October 17–24, 2001, Rome, Italy. *Food Nutr Tech Rep Ser* 2005, pp 35ff.
- Bader N, Bosity-Westphal A, Dilba B, Muller MJ: Intra- and interindividual variability of resting energy expenditure in healthy male subjects – biological and methodological variability of resting energy expenditure. *Br J Nutr* 2005;94:843–849.
- Weyer C, Walford RL, Harper IT, Milner M, MacCallum T, Tataranni PA, Ravussin E: Energy metabolism after 2 years of energy restriction: the biosphere 2 experiment. *Am J Clin Nutr* 2000;72:946–953.
- Illner K, Brinkmann G, Heller M, Bosity-Westphal A, Muller MJ: Metabolically active components of fat free mass and resting energy expenditure in nonobese adults. *Am J Physiol Endocrinol Metab* 2000;278:E308–E315.
- Tremblay A, Coveney S, Despres JP, Nadeau A, Prud'homme D: Increased resting metabolic rate and lipid oxidation in exercise-trained individuals: evidence for a role of beta-adrenergic stimulation. *Can J Physiol Pharmacol* 1992;70:1342–1347.
- Cunningham JJ: A reanalysis of the factors influencing basal metabolic rate in normal adults. *Am J Clin Nutr* 1980;33:2372–2374.
- Harris JA, Benedict FA: A Biometric Study of Basal Metabolic Rate in Man. Washington, Carnegie Institute of Washington, 1919.
- Rodriguez NR, DiMarco NM, Langley S: Position of the American Dietetic Association, Dietitians of Canada, and the American College of Sports Medicine: nutrition and athletic performance. *J Am Diet Assoc* 2009;109:509–527.
- Thompson J, Manore MM: Predicted and measured resting metabolic rate of male and female endurance athletes. *J Am Diet Assoc* 1996;96:30–34.
- Malina RM: Body composition in athletes: assessment and estimated fitness. *Clin Sports Med* 2007;26:37–68.
- Kerr DA, Ross WD, Norton K, Hume P, Kagawa M, Ackland TR: Olympic lightweight and open-class rowers possess distinctive physical and proportionality characteristics. *J Sports Sci* 2007;25:43–53.
- Harris JA, Benedict FG: A biometric study of human basal metabolism. *Proc Natl Acad Sci USA* 1918;4:370–373.
- De Lorenzo A, Bertini I, Candeloro N, Piccinelli R, Innocente I, Brancati A: A new predictive equation to calculate resting metabolic rate in athletes. *J Sports Med Phys Fitness* 1999;39:213–219.
- al-Adsani H, Hoffer LJ, Silva JE: Resting energy expenditure is sensitive to small dose changes in patients on chronic thyroid hormone replacement. *J Clin Endocrinol Metab* 1997;82:1118–1125.
- Horner NK, Lampe JW, Patterson RE, Neuhauser ML, Beresford SA, Prentice RL: Indirect calorimetry protocol development for measuring resting metabolic rate as a component of total energy expenditure in free-living postmenopausal women. *J Nutr* 2001;131:2215–2218.
- Platte P, Wurmser H, Wade SE, Mercheril A, Pirke KM: Resting metabolic rate and diet-induced thermogenesis in restrained and unrestrained eaters. *Int J Eat Disord* 1996;20:33–41.
- Thompson JL, Manore MM, Skinner JS, Ravussin E, Spraul M: Daily energy expenditure in male endurance athletes with differing energy intakes. *Med Sci Sports Exerc* 1995;27:347–354.
- Van Zant RS: Influence of diet and exercise on energy expenditure – a review. *Int J Sport Nutr* 1992;2:1–19.
- Sjodin AM, Forslund AH, Westerterp KR, Andersson AB, Forslund JM, Hambraeus LM: The influence of physical activity on BMR. *Med Sci Sports Exerc* 1996;28:85–91.
- Scharhag-Rosenberger F, Carlsohn A, Cassel M, Mayer F, Scharhag J: How to test maximal oxygen uptake: a study on timing and testing procedure of a supramaximal verification test. *Appl Physiol Nutr Metab* 2011;36:153–160.
- Plasqui G, Kester AD, Westerterp KR: Seasonal variation in sleeping metabolic rate, thyroid activity, and leptin. *Am J Physiol Endocrinol Metab* 2003;285:E338–E343.
- Parizkova J, Buzkova P: Relationship between skinfold thickness measured by Harpenden caliper and densitometric analysis of total body fat in men. *Hum Biol* 1971;43:16–21.
- Weststrate JA: Resting metabolic rate and diet-induced thermogenesis: a methodological reappraisal. *Am J Clin Nutr* 1993;58:592–601.
- Compher C, Frankenfield D, Keim N, Roth-Yousey L: Best practice methods to apply to measurement of resting metabolic rate in adults: a systematic review. *J Am Diet Assoc* 2006;106:881–903.
- Hoffman JR, Kang J, Ratames NA, Jennings PF, Mangine G, Faigenbaum AD: Thermogenic effect from nutritionally enriched coffee consumption. *J Int Soc Sports Nutr* 2006;3:35–41.
- Tremblay A, Nadeau A, Fournier G, Bouchard C: Effect of a three-day interruption of exercise-training on resting metabolic rate and glucose-induced thermogenesis in training individuals. *Int J Obes* 1988;12:163–168.
- Rodriguez G, Moreno LA, Sarria A, Fleta J, Bueno M: Resting energy expenditure in children and adolescents: agreement between calorimetry and prediction equations. *Clin Nutr* 2002;21:255–260.
- Weir JB: New methods for calculating metabolic rate with special reference to protein metabolism. *J Physiol* 1949;109:1–9.
- Bland JM, Altman DG: Measuring agreement in method comparison studies. *Stat Methods Med Res* 1999;8:135–160.
- Bland JM, Altman DG: Comparing methods of measurement: why plotting difference against standard method is misleading. *Lancet* 1995;346:1085–1087.
- Hopkins WG: Bias in Bland-Altman but not Regression Validity Analysis. *Sportscience* 2004;8:42–46.
- Muller MJ, Bosity-Westphal A, Klaus S, Kreyman G, Luhrmann PM, Neuhauser-Berthold M, Noack R, Pirke KM, Platte P, Selberg O, Steiniger J: World Health Organization equations have shortcomings for predicting resting energy expenditure in persons from a modern, affluent population: generation of a new reference standard from a retrospective analysis of a German database of resting energy expenditure. *Am J Clin Nutr* 2004;80:1379–1390.
- Henry CJ, Lightowler HJ, Marchini J: Intra-individual variation in resting metabolic rate during the menstrual cycle. *Br J Nutr* 2003;89:811–817.