

Alfredo Romero-Munoz | Guillermo Fandos | Ana Benítez-López |  
Tobias Kuemmerle

# Habitat destruction and overexploitation drive widespread declines in all facets of mammalian diversity in the Gran Chaco

**Suggested citation referring to the original publication:**

**Global change biology 27 (2020) 4, pp. 755 - 767**

**DOI <https://doi.org/10.1111/gcb.15418>**

**ISSN 1354-1013, 1365-2486**

**Journal article | Version of record**

**Secondary publication archived on the Publication Server of the University of Potsdam:**

**Zweitveröffentlichungen der Universität Potsdam : Mathematisch-Naturwissenschaftliche Reihe 1370**

**ISSN: 1866-8372**

**<https://nbn-resolving.org/urn:nbn:de:kobv:517-opus4-567696>**

**DOI: <https://doi.org/10.25932/publishup-56769>**

**Terms of use:**

**This work is licensed under a Creative Commons License. This does not apply to quoted content from other authors. To view a copy of this license visit <https://creativecommons.org/licenses/by/4.0/>.**



# Habitat destruction and overexploitation drive widespread declines in all facets of mammalian diversity in the Gran Chaco

Alfredo Romero-Muñoz<sup>1,2</sup>  | Guillermo Fandos<sup>1,3</sup>  | Ana Benítez-López<sup>4</sup>  |  
Tobias Kummerle<sup>1,5</sup> 

<sup>1</sup>Geography Department, Humboldt-University Berlin, Berlin, Germany

<sup>2</sup>Fundación Cohabitar, Sucre, Bolivia

<sup>3</sup>Institute for Biochemistry and Biology, University of Potsdam, Potsdam, Germany

<sup>4</sup>Integrative Ecology Group, Estación Biológica de Doñana (EBD-CSIC), Sevilla, Spain

<sup>5</sup>Integrative Research Institute on Transformations of Human-Environment Systems (IRI THESys), Berlin, Germany

## Correspondence

Alfredo Romero-Muñoz, Geography Department, Humboldt-University Berlin, Berlin, Germany.

Email: alfredo.romero@geo.hu-berlin.de

## Funding information

Bundesministerium für Bildung und Forschung, Grant/Award Number: 031B0034A; Deutsche Forschungsgemeinschaft, Grant/Award Number: KU 2458/5-1; Ministerio de Ciencia, Innovación y Universidades, Grant/Award Number: IJCI-2017-31419;

## Abstract

Global biodiversity is under high and rising anthropogenic pressure. Yet, how the taxonomic, phylogenetic, and functional facets of biodiversity are affected by different threats over time is unclear. This is particularly true for the two main drivers of the current biodiversity crisis: habitat destruction and overexploitation. We provide the first long-term assessment of multifaceted biodiversity changes caused by these threats for any tropical region. Focussing on larger mammals in South America's 1.1 million km<sup>2</sup> Gran Chaco region, we assessed changes in multiple biodiversity facets between 1985 and 2015, determined which threats drive those changes, and identified remaining key areas for all biodiversity facets. Using habitat and threat maps, we found, first, that between 1985 and 2015 taxonomic (TD), phylogenetic (PD) and functional (FD) diversity all declined drastically across over half of the area assessed. FD declined about 50% faster than TD and PD, and these declines were mainly driven by species loss, rather than species turnover. Second, habitat destruction, hunting, and both threats together contributed ~57%, ~37%, and ~6% to overall facet declines, respectively. However, hunting pressure increased where TD and PD declined most strongly, whereas habitat destruction disproportionately contributed to FD declines. Third, just 23% of the Chaco would have to be protected to safeguard the top 17% of all three facets. Our findings uncover a widespread impoverishment of mammal species richness, evolutionary history, and ecological functions across broad areas of the Chaco due to increasing habitat destruction and hunting. Moreover, our results pinpoint key areas that should be preserved and managed to maintain all facets of mammalian diversity across the Chaco. More generally, our work highlights how long-term changes in biodiversity facets can be assessed and attributed to specific threats, to better understand human impacts on biodiversity and to guide conservation planning to mitigate them.

## KEYWORDS

biodiversity facets, extinction drivers, functional diversity, functional richness, overhunting, phylogenetic diversity, taxonomic diversity, traits

This is an open access article under the terms of the Creative Commons Attribution License, which permits use, distribution and reproduction in any medium, provided the original work is properly cited.

© 2020 The Authors. *Global Change Biology* published by John Wiley & Sons Ltd

## 1 | INTRODUCTION

Human activities are driving the global biodiversity crisis, and the two biggest threats are habitat destruction and overexploitation (Díaz et al., 2019; Hooper et al., 2012; IPBES, 2019). Assessing patterns of biodiversity change due to these threats is therefore crucial for conserving biodiversity and achieving sustainability goals (Cardinale et al., 2012; Díaz et al., 2019; IPBES, 2019). Most efforts assessing biodiversity change across broad spatial scales have focused on taxonomic diversity and have not connected those changes to multiple threats (e.g. Dornelas et al., 2014; Kerbiriou et al., 2009; Tingley & Beissinger, 2013). Yet, a focus on taxonomic diversity neglects evolutionary history and long-term evolutionary potential (Winter et al., 2013). Likewise, taxonomic diversity overlooks the diverse ecological functions of species in ecosystems (Cadotte et al., 2011; Winter et al., 2013), which maintain ecosystem integrity and functioning and ultimately provide nature's contributions to people (Cadotte et al., 2011; Cardinale et al., 2012; Díaz et al., 2019). Therefore, assessing how different threats contribute to long-term changes in all three biodiversity facets, taxonomic (TD), phylogenetic (PD), and functional (FD) diversity, is crucial for a more comprehensive understanding of human impacts on nature. Likewise, this understanding is also vital to develop conservation strategies that better account for all biodiversity facets.

The varied and widespread change across biodiversity components is better understood through temporal assessments—rather than space-for-time substitutions—particularly across rapidly changing regions (Damgaard, 2019). Long-term studies have reported decreasing (Tingley & Beissinger, 2013), increasing (Kerbiriou et al., 2009), or no net change of TD (Dornelas et al., 2014). Likewise, the few studies focusing on more than one biodiversity facet have reported both similar (Jarzyna & Jetz, 2017) and different (Monnet et al., 2014; Villéger et al., 2010) temporal trends among facets. Only two studies, focusing on birds across France (Monnet et al., 2014) and the USA (Jarzyna & Jetz, 2017), have simultaneously assessed the long-term changes of all three biodiversity facets at broad scales. All facets increased in both studies, except for FD in France, which remained stable.

In contrast, the long-term multifaceted changes of biodiversity in the tropics—where the overwhelming majority of Earth's biodiversity resides, and where their main threats are expanding the fastest (Barlow et al., 2018; Bradshaw et al., 2009)—remain largely unexplored. The downward trends of TD and of natural habitats reported in the tropics (Barlow et al., 2016; Hansen et al., 2013; Romero-Muñoz et al., 2020) suggest that biodiversity trends likely differ substantially from those reported from temperate regions. Recent advances in remote sensing and ecological modelling allow us to reconstruct detailed land-use change histories, as well as the distributions of species and the spatial footprints of threats for multiple species across several decades and large regions (Baumann et al., 2017; Benítez-López et al., 2019; Romero-Muñoz et al., 2020). Together with increasingly available trait and phylogenetic information, these developments open the opportunity to assess long-term

changes in multiple biodiversity facets across rapidly changing regions.

Habitat destruction and overexploitation are the leading drivers of global biodiversity decline (IPBES, 2019; Maxwell et al., 2016). Both threats are rapidly expanding into previously natural areas across the tropics due to the increasing human demand for agricultural products, such as beef, soy (predominantly used as livestock feed), and palm oil (Kehoe et al., 2017; Laurance et al., 2009). Yet, these threats affect species differently (Ripple et al., 2017; Romero-Muñoz et al., 2020), and therefore may affect biodiversity facets differently. For instance, habitat destruction and degradation through land-use change may disproportionately affect species within specific phylogenetic lineages (Frishkoff et al., 2014; Nowakowski et al., 2018) or with specific traits (Newbold et al., 2020; Wordley et al., 2017). Likewise, species from some lineages (D'agata et al., 2014; Davis et al., 2018), or with certain traits, like large body size (Benítez-López et al., 2019; Ripple et al., 2017), are more vulnerable to overexploitation.

Habitat destruction and hunting pressure are widespread in tropical regions (Gallego-Zamorano et al., 2020; Romero-Muñoz et al., 2020) and, where these threats co-occur, they exacerbate biodiversity loss even more than either threat alone (Brook et al., 2008; Mouillot et al., 2013; Peres, 2001). Despite the importance of assessing and mapping the combined impact of these major threats, previous studies have focused either on individual threats, usually only habitat modification, when assessing changes in several biodiversity facets (e.g. Chapman et al., 2018; Frishkoff et al., 2014; Wordley et al., 2017), or on multiple threats for single species (Romero-Muñoz et al., 2019) or only on TD (Romero-Muñoz et al., 2020). The contribution of the individual versus combined effects of threats to changes in multiple biodiversity facets remains so far unexplored.

This is unfortunate, as learning how the three biodiversity facets are impacted by threats in space and time would enable more effective conservation planning, through threat-specific targeting of conservation actions (Devictor et al., 2010; Pollock et al., 2017). Although conservation planning often assumes that one facet also represents others, recent studies found considerable spatial mismatches among facets (Devictor et al., 2010; Mazel et al., 2018; Safi et al., 2011). Therefore, conservation planning could benefit from identifying the most important areas for each biodiversity facet, as well as where those areas overlap. However, current methods to map facets are not ideal, because most rely on expert-based species range maps, which represent single snapshots in time, contain errors, and are built at a coarse scale (Ficetola et al., 2014). As threats are expanding and intensifying (Allan et al., 2019; Benítez-López et al., 2017; Kehoe et al., 2017), there is an urgent need to map the spatial congruence of all three biodiversity facets at resolutions fine enough to inform conservation planning.

This is particularly urgent in tropical deforestation frontiers, which are global hotspots of biodiversity loss (Barlow et al., 2018; Bradshaw et al., 2009; Hoekstra et al., 2005). Many such frontiers, particularly those in tropical dry forests, are weakly protected (Hoekstra et al., 2005; Kuemmerle et al., 2017). The Gran Chaco

(hereafter 'Chaco') in South America is one of the most at-risk regions globally, due to rapid expansion of cattle ranching and soy cultivation (Kuemmerle et al., 2017; WWF, 2015). The region is a global hotspot of habitat conversion and defaunation (Baumann et al., 2017; Romero-Muñoz et al., 2020), yet despite calls for assessing the facets of biodiversity in this region (Periago et al., 2014), no such assessment exists.

Here, we provide the first assessment of TD, FD, and PD for the large- and medium-sized mammals (>~1 kg, hereafter 'larger mammals') in the Chaco, a global deforestation hotspot. These species represent a phylogenetically diverse group, including some lineages endemic to the Chaco, such as those represented by the Chacoan peccary (*Catagonus wagneri*), the Chacoan mara (*Dolichotis salinicola*), and several armadillo species (Nori et al., 2016). The enormous variation in size and morphology among larger mammals in the Chaco also translates into a high diversity of ecological roles and resource uses. Several ecosystem functions are unique to larger mammals, such as dispersing the seeds of the largest trees or regulating the populations of other large animals (Lacher et al., 2019). Such roles have significant effects on nutrient cycling and energy flows, and in structuring ecological communities and thus promoting high biodiversity and ecosystem stability (Lacher et al., 2019; Terborgh, 2015). In turn, larger mammals provide various contributions to people directly, such as by being sources of protein for local communities, and indirectly, such as by enhancing forest regeneration and carbon storage capacity (Bello et al., 2015; Noss et al., 2004). Many larger mammals in the Chaco are highly vulnerable to habitat destruction and hunting (Romero-Muñoz et al., 2020; Semper-Pascual et al., 2018) and their declines threaten to erase unique evolutionary histories, affect ecosystem integrity, and negatively impact nature's contributions to people.

Here we aim to assess 30 years of change in the three facets of mammalian diversity in the Chaco, and explore how habitat destruction and overexploitation contributed to these changes. To our knowledge, this represents the first assessment of this kind for (a) mammals, (b) the tropics, and (c) in relation to multiple, interacting threats. Specifically, we aim to answer:

1. How has the TD, PD, and FD of larger mammals in the Chaco changed between 1985 and 2015?
2. How have the individual and combined effects of habitat destruction and hunting contributed to changes in these three facets?
3. Where are the priority areas for conserving each facet of mammalian diversity in the Chaco and where do they overlap?

## 2 | METHODS

### 2.1 | Study region

The Gran Chaco region extends across 1.1 million km<sup>2</sup> in Argentina, Paraguay, and Bolivia, and is the largest tropical and subtropical dry forest in the world. Xeric forests are the dominant vegetation

formation, with interspersed mosaics of natural savannas and gallery forests. The climate ranges from tropical in the north to subtropical in the centre and south. Precipitation ranges from 1,400 mm in the east to 400 mm in the west and south. The Chaco is rich in biodiversity, with over 150 mammal species, 500 birds, and over 3,000 plant species (TNC, FVS, FDSC, & WCS, 2005). Over the last decades, the Chaco has become a global deforestation hotspot, losing 20% of its forests since 1985 due to the expanding croplands, mainly in Argentina, and livestock ranching, mainly in Paraguay and Bolivia (Baumann et al., 2017). These pressures are likely impacting ecosystem functioning over large scales (Periago et al., 2014), although this has not been yet quantified. Despite these pressures, only about 9% of the Chaco is currently protected (Nori et al., 2016).

### 2.2 | Datasets used

We produced maps of the habitats and the footprints of habitat destruction and hunting pressure separately for 48 larger mammals between 1985 and 2015 at a 1 km<sup>2</sup> resolution in an earlier study (Romero-Muñoz et al., 2020). This was done using habitat suitability models to track habitat suitability across space and time, and hunting pressure models to do the same for the hunting risk. We performed separate multi-temporal habitat suitability models and hunting pressure models for each species.

To assess habitat suitability, we used the largest database of presence records of larger mammals ever collected for the Chaco, containing occurrences from 1985 to 2015, which we analysed using maximum entropy modelling (Maxent v3.4.1; Phillips et al., 2017). Maxent predicts a species' occurrence' by comparing the locations of recorded presences to the overall distribution of environmental predictors for a study region, which are sampled through background points (Phillips et al., 2017). We generated seven predictors related to habitat suitability for mammals for 1985 and 2015, at a 1 km<sup>2</sup> resolution: % forest, % pastures, % cropland, % forest edge, distance to water, mean annual temperature, and mean annual precipitation. All Maxent models were parameterized using only hinge features to avoid overfitting, a regularization multiplier of 1, and a prevalence value of 0.5, and we controlled for sampling bias in our occurrence and background datasets. We cross-validated all models using averaged area under the curve (AUC) values across the replicates. Our models generally had a high discriminative power (AUC > 0.7; see Romero-Muñoz et al., 2020).

We applied the method developed by Benítez-López et al. (2019) to model hunting pressure as the declines in each species' abundance due to hunting. The hunting pressure model is based on 3,281 abundance estimates of larger mammals systematically comparing hunted and non-hunted sites across the Tropics (Benítez-López et al., 2019). To accommodate for both local extirpations and abundance declines, a two-stage mixed model is fitted, including a binomial model to discriminate extant and locally extinct species, and a Gaussian model to assess abundance change due to hunting (Benítez-López et al., 2019). We refitted the original global model to Neotropical mammals only

( $n = 1,974$  abundance changes). We included the *distance to hunter's access points* and *human population density* as spatial predictors of hunting risk, and *species' body mass* as predictor of species-specific vulnerability to population decline due to hunting (Benítez-López et al., 2019). The result of our hunting pressure model is a hunting pressure index ranging from 0 (no decline in abundance) to 1 (local extirpation; see Romero-Muñoz et al., 2020).

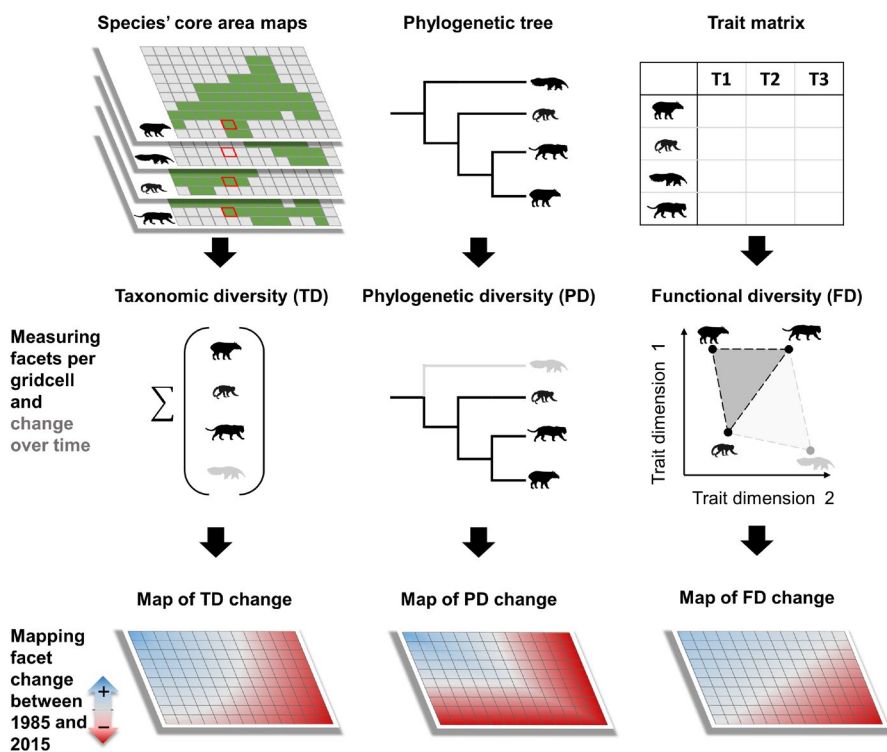
We projected the habitat suitability and hunting pressure models to 1985 and 2015 (Romero-Muñoz et al., 2020). For each year, we classified the maps resulting from the habitat suitability model into good and poor habitat suitability using the maximum sensitivity plus specificity threshold (Liu et al., 2013). Similarly, we classified the hunting pressure maps for each species into low and high hunting pressure. We used a 30% abundance decline as threshold to classify a species as threatened (here representing high hunting pressure), following the IUCN Red List criteria (IUCN, 2012). Overlapping these classified, binary habitat suitability and hunting pressure maps per species highlighted four areas differently affected by threats at each time step: (a) areas with good habitat suitability and low hunting pressure (hereafter: core areas), (b) areas with good habitat suitability but high hunting pressure (hunting pressure), (c) poor habitat suitability but low hunting pressure (poor habitat), and (d) poor habitat and high hunting pressure (co-occurring threats). Furthermore, we considered the change from core area in 1985 to 'poor habitat' in 2015 as 'habitat destruction' and from core to 'hunting pressure' as increasing hunting pressure (hereafter simply 'hunting pressure'), because such increasing threats can be solely attributed to anthropogenic impacts during this period.

We then calculated the three biodiversity facets at a  $5 \times 5 \text{ km}^2$  resolution, where each gridcell represents a community of mammals.

The  $25 \text{ km}^2$  gridcell size is meaningful in our case as it allows for integrating across species with a wide range of home range sizes (mean =  $9.7 \text{ km}^2$ ,  $SD = \pm 22.2$ ; gathered from Jones et al., 2009), while being fine enough for regional conservation planning. To aggregate our species level,  $1 \text{ km}^2$  resolution maps to the  $5 \text{ km}$  grid, we assigned the most frequent habitat or threat category at the  $1 \text{ km}$  grids. We considered a species present in a grid cell if it had core area in it.

### 2.3 | Depicting biodiversity facets

We calculated metrics for each of the three facets for the years 1985 and 2015 individually (Figure 1). We derived TD as species richness (i.e. number of species per gridcell). In addition, we assessed the change in community composition over time, (i.e. temporal community dissimilarity) and the contribution of its components (Baselga, 2010). Changes in the species composition of a community result from changes in species richness and the replacement of some species by others (i.e. turnover), or a combination of both (Baselga, 2010). Measures of total dissimilarity, such as the Sørensen dissimilarity index, can thus be decomposed into its turnover and species richness change components (Baselga, 2010). While the Sørensen index measures total dissimilarity, the Simpson dissimilarity index accounts only for the turnover component. Thus, the difference between both indices accounts for the species richness change component of dissimilarity (Baselga, 2010). We assessed the temporal community dissimilarity only for TD, as equivalent methods have not yet been developed for the other biodiversity facets (Baselga &



**FIGURE 1** Framework to quantify and map changes in the three facets of mammalian diversity across our study region. FD, functional diversity; PD, phylogenetic diversity; TD, taxonomic diversity

Orme, 2012). We determined the contribution of species richness change and turnover to total dissimilarity change between 1985 and 2015 for each community using the *beta.temp* function in the R package *betapart* v1.5.1 (Baselga & Orme, 2012).

For measuring phylogenetic diversity, we used Faith's PD index, which represents the minimum total length of the phylogenetic tree's branches of the species within each community (Faith, 1992). To account for phylogenetic uncertainty, we extracted an average tree for the entire set of species from a set of 1,000 trees available in the PHYLOCINE database (Faurby et al., 2018) using the function *averageTree* in the *phytools* package (Revell, 2012). Based on this phylogenetic tree, we calculated the PD index using the *Picante* package in R (Kembel et al., 2010).

As our measure of FD, we calculated functional richness (also known as 'FRic'; Villéger et al., 2008). This index represents the amount of multidimensional functional space occupied by all the species in the community (Villéger et al., 2008). We chose this index instead of the commonly used dendrogram-based index (Petchey & Gaston, 2002), because the latter has been shown to produce biased estimates of FD, leading to inaccurate biogeographical patterns (Maire et al., 2015). We first gathered a database of traits related to resource use (Table S1), assessed the collinearity among traits through a Pearson's correlation test, to ensure that traits had  $r < .5$  to and therefore non-redundant (Villéger et al., 2008; Figure S1). Our final list included seven traits: *diet, use of forest strata, use of day/night, home range size, body mass, generation length, and number of offspring per year*, gathered from several sources (Table S1; Jones et al., 2009; Myers et al., 2019; Tacutu et al., 2012; Wilman et al., 2014). To calculate FD, we used a distance-based framework, based on the Gower distance among traits (Laliberté & Legendre, 2010). We weighted traits equally and applied a principal coordinates analysis (PCoA) ordination based on the distance matrix to build a multidimensional functional space. We calculated FD using the *FD* package v1.0-12 in R (Laliberté & Legendre, 2010).

The quality of the functional space used to calculate FD (i.e. how well it represents the initial trait values) depends on the number of dimensions of the multidimensional functional space spanned by the PCoA axis (Maire et al., 2015). We compared the quality of functional spaces produced by two to seven dimensions by calculating the mean squared deviation (mSD) metric (Maire et al., 2015). This metric assesses the degree of consistency between the initial and final functional distances (the closer mSD is to 0, the higher the quality of the functional space). As can be expected (Maire et al., 2015), functional space quality increased with the number of dimensions (Figure S2a). However, there is trade-off between functional space quality and the spatial comprehensiveness of our analyses, as FD can only be calculated for communities with more species than the number of dimensions (Villéger et al., 2008). Therefore, the more dimensions are used to calculate FD, the higher the number of grid-cells that will be dropped from the analyses (Figure S2b). Aiming to produce a high-quality functional space that still allows us to estimate FD across a large portion of our regions, we opted for a four-dimensional functional space in our case (mSD = 0.023). About

50% of all gridcells had less than five species in either 1985 or 2015 and were therefore not included in our FD analyses. These areas mainly occurred in the southern Chaco (Figure S2c), where anthropogenic pressures caused substantial defaunation before our study period, meaning that threat levels remained relatively static during 1985–2015.

To facilitate comparisons across facets, we calculated all three facets for the same set of communities (i.e. gridcells with  $\geq 5$  species in both 1985 and 2015) and standardized the values for all three facets by expressing them as the percentage of the maximum value per facet (i.e. the total TD; the entire length of branches for the full tree for PD; and the entire functional space for all species for FD; Kembel et al., 2010; Laliberté & Legendre, 2010). We assessed changes over time for each facet as the difference between 1985 and 2015 (e.g.  $\Delta FD_{1985-2015} = FD_{2015} - FD_{1985}$ ). As the rate and extent of land-use change has varied across space (Baumann et al., 2017), we assessed the change in biodiversity facets for the entire region as well as within countries and inside versus outside protected areas. We included all designated national-level protected areas from UNEP-WCMC and IUCN (2019).

## 2.4 | Threat effects on biodiversity facets

A challenge in assessing the impacts of multiple threats on multiple biodiversity facets is the attribution of community-level declines in facets to particular threats, because different threats can affect species differently in different areas. We addressed this challenge using newly developed measures for assessing species' functional and phylogenetic distinctiveness within communities (Cadotte & Tucker, 2018; Violle et al., 2017). Specifically, we assessed the relative importance of habitat destruction and hunting pressure on the decline of each facet by first assessing which species lost core areas in a given gridcell (i.e. one or both threats became prevalent for that species in that gridcell), and second summing up threats responsible for that loss (habitat destruction, hunting, or co-occurring threats) while weighting species according to their distinctiveness.

Distinctiveness is defined as the mean distance in the diversity measure used to the  $N$  other species within each community (Violle et al., 2017). For TD, these distances between species are always 1. For FD and PD, we calculated distinctiveness per species for the community in 1985—here considered as the baseline year—using the 'distinctiveness' function in the *funrar* package v1.4.1 in R (Grenié et al., 2017). A species' taxonomic, phylogenetic, or functional distinctiveness is calculated according to:

$$Di = \frac{\sum_{j=1, j \neq i}^N d_{ij}}{N-1},$$

where  $N$  is the number of species within the community, and  $d_{ij}$  is the taxonomic, functional, or phylogenetic distance between species  $i$  and  $j$ . We scaled  $d_{ij}$  between 0 and 1 using a minmax transformation (Violle et al., 2017).

We used this approach to calculate the relative importance of habitat destruction, hunting pressure, or co-occurring threats for biodiversity loss, separately for each of our three facets. To assess whether the relative importance of threats changed at higher values of facet loss, we repeated this procedure at different thresholds of loss per facet (e.g. for the top 75%, 50%, and 25% of the gridcells with the highest losses per facet). We also assessed the spatial congruence among the three biodiversity facets for 2015 by measuring the pairwise correlation of facet values across all gridcells. We then mapped the gridcells with the top 5%, 10%, 17%, and 25% values per facet (Brum et al., 2017). We assessed the overlap of the top 17% gridcells among facets—the minimum surface recommended for protection by the Convention on Biological Diversity's Aichi target 11 (Tittensor et al., 2014).

### 3 | RESULTS

We assessed TD, FD and PD, and their change from 1985 to 2015, for a total of 21,462 communities (i.e. gridcells of  $5 \times 5 \text{ km}^2$ ) with five or more species, representing 536,550  $\text{km}^2$ . TD, PD, and FD declined considerably between 1985 and 2015, across 52%, 56%, and 53% of the area assessed, respectively. In areas of decline, TD declined on average by  $-7.3\%$  ( $\pm 6.11\%$  SD) of the maximum TD value for the entire Chaco, while PD and FD decreased on average by  $-6.5\%$  ( $\pm 5.8\%$  SD) and  $-11.2\%$  ( $\pm 12.15\%$  SD), respectively. Considering the entire area assessed, TD declined on average by  $-2.8\%$  ( $\pm 6.8\%$  SD) on average, while PD and FD decreased on average by  $-2.6$  ( $\pm 6.8\%$  SD) and  $-4.2\%$  ( $\pm 12.7\%$  SD), respectively. The areas excluded from this comparison (<5 species) were predominantly located in southern Chaco. For comparison, we also assessed the change in TD and PD (but not FD) across the entire Gran Chaco (43,941 communities; 1.1 million  $\text{km}^2$ ). This revealed very similar trends than for areas with  $\geq 5$  species, but smaller average changes (Figure S6).

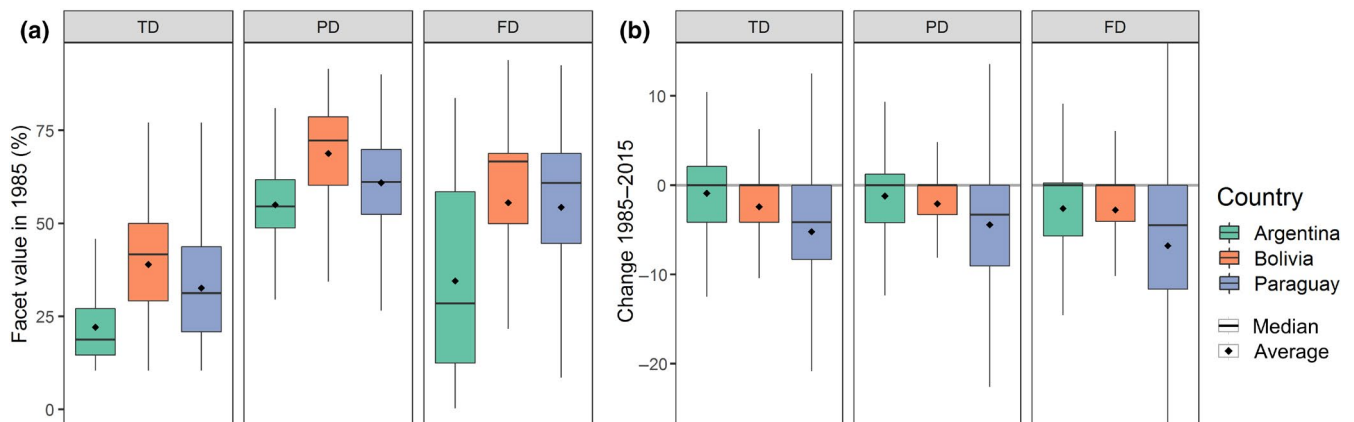
Among countries, Bolivia held higher values for all biodiversity facets in 1985, followed by Paraguay and Argentina (Figure 2a).

Between 1985 and 2015, Paraguay lost substantially more mammalian diversity in all three facets (TD =  $-5.2\%$ , PD =  $-4.4\%$ , FD =  $-6.8\%$ , and on average), than Bolivia (and  $-2.4\%$ ,  $-2.1\%$ , and  $-2.8\%$ , respectively), and Argentina ( $-0.9\%$ ,  $-1.2\%$ , and  $-2.6\%$ , respectively; Figure 2b). All biodiversity facets decreased more in unprotected areas (TD:  $-2.9\%$ , PD:  $-2.6\%$ , and FD:  $-4.5\%$ ) than in protected areas ( $-2.2\%$ ,  $-2.1\%$ , and  $-2.3\%$ , respectively; Figure S3).

The geographical patterns of change of the three biodiversity facets over time showed some similarities but also marked differences (Figure 3). The geographical patterns of change were similar for TD and PD, with the areas of highest loss concentrated mainly in northern Paraguay (Figure 3). Losses in FD were highest in north-western Paraguay and the north-western Chaco in Bolivia. In contrast, we identified areas with low positive changes in TD, PD, and FD in the central and southern Chaco. Overall, changes over time in TD and PD were more correlated (Spearman's  $\rho = 0.87$ ), than the changes in FD and TD ( $\rho = 0.73$ ), and FD and PD ( $\rho = 0.68$ ).

Regarding the overall community composition change over time, the contribution of species richness change was larger (mean =  $0.11 \pm 0.14$  SD; median = 0.06) than that of turnover ( $0.09 \pm 0.18$  SD; median = 0.00) to total Sørensen temporal dissimilarity (mean =  $0.20 \pm 0.21$  SD; median = 0.16; Figure S4). These differences were highly significant (Wilcoxon signed ranks test,  $V = 217,830,000$ ,  $p < .001$ ). Among communities that changed, species richness change (and here specifically species loss) was a larger contributor to dissimilarity than turnover (61% vs. 39% of communities).

The expansion of habitat destruction and hunting pressure between 1985 and 2015 contributed strongly to declines in all biodiversity facets. The overall area of expansion of habitat destruction, hunting pressure, and co-occurring threats between 1985 and 2015 covered 42%, 24%, and 8% (448,900, 261,000, and 84,600  $\text{km}^2$ ) of the entire Chaco, respectively (Figure S5). The cumulative area experiencing habitat destruction and hunting pressure extended to over 51% of the Gran Chaco (563,500  $\text{km}^2$ ). In terms of their



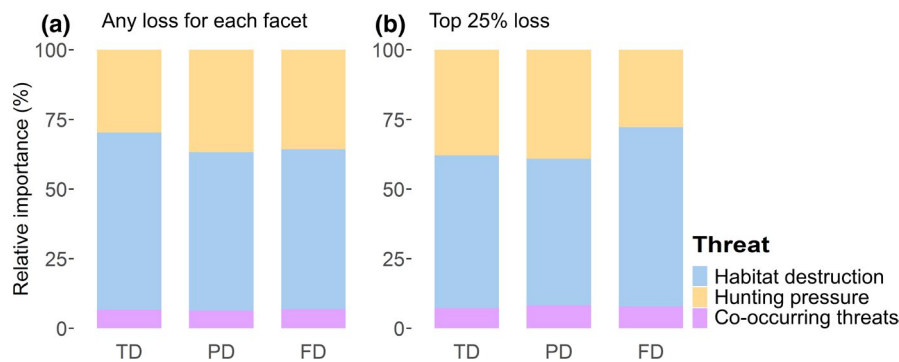
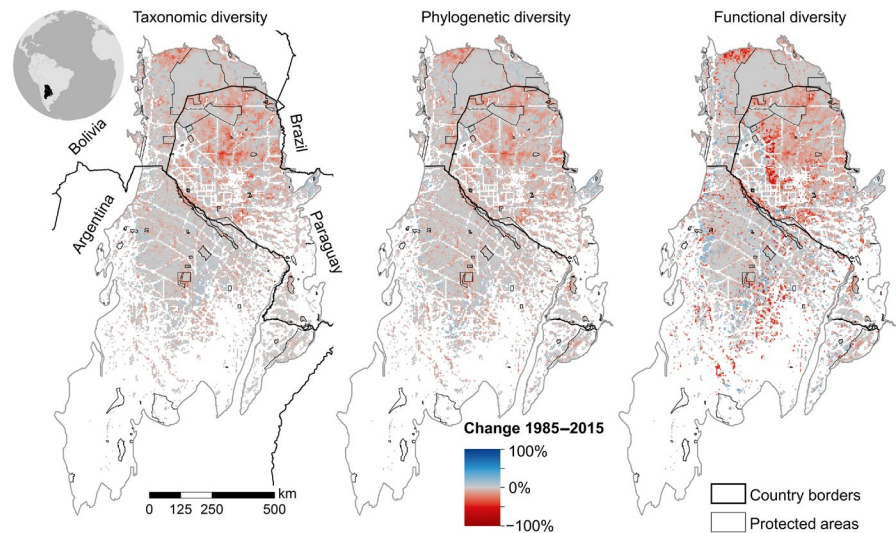
**FIGURE 2** Change in the three facets of mammalian diversity of the Chaco between 1985 and 2015. (a) Standardized facet values (percentage of maximum values) per country for the baseline year of 1985. (b) Changes in standardized facet values between 2015 and 1985 across 21,462 communities ( $5 \times 5 \text{ km}^2$  gridcells). FD, functional diversity; PD, phylogenetic diversity; TD, taxonomic diversity



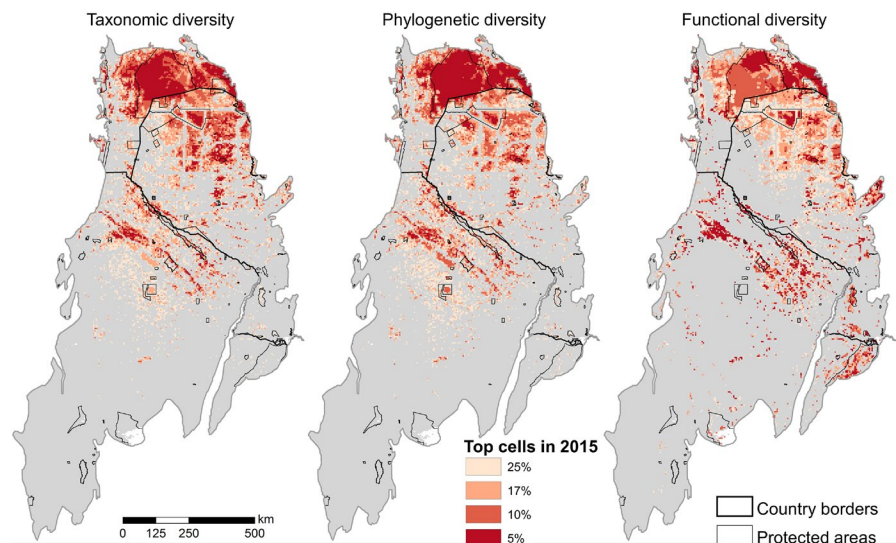
contributions to declines in facets' distinctiveness, when considering all areas experiencing facet loss, habitat destruction was by far the most important threat (57%), followed by hunting pressure (37%) and co-occurring threats (6%; Figure 4a). Focussing on those areas

experiencing highest loss in a facet revealed some interesting differences compared to the region-wide results. When considering the 25% of gridcells with highest loss per facet, the relative importance of hunting increased (to 38% and 39% for TD and PD, respectively),

**FIGURE 3** Changes in the taxonomic, phylogenetic, and functional facets of mammalian diversity in the Chaco from 1985 to 2015, assessed for communities with  $\geq 5$  species in both 1985 and 2015. Red areas represent communities with higher losses, blue with higher increases, and grey no change. In white we represent all communities that were not assessed because they had  $\leq 4$  species in either 1985 or 2015. All facets are standardized so that 100% represents the diversity of this facet for the full Chacoan community of 48 larger mammals



**FIGURE 4** Relative importance of threats for losses in biodiversity facets between 1985 and 2015. Relative importance is measured by attributing a threat category to each species lost from a community, and weighting species by their distinctiveness in the community. (a) Relative importance of threats across all cells that experienced facet decline. (b) Relative importance of threats in the top 25% of cells with highest declines per facet. FD, functional diversity; PD, phylogenetic diversity; TD, taxonomic diversity



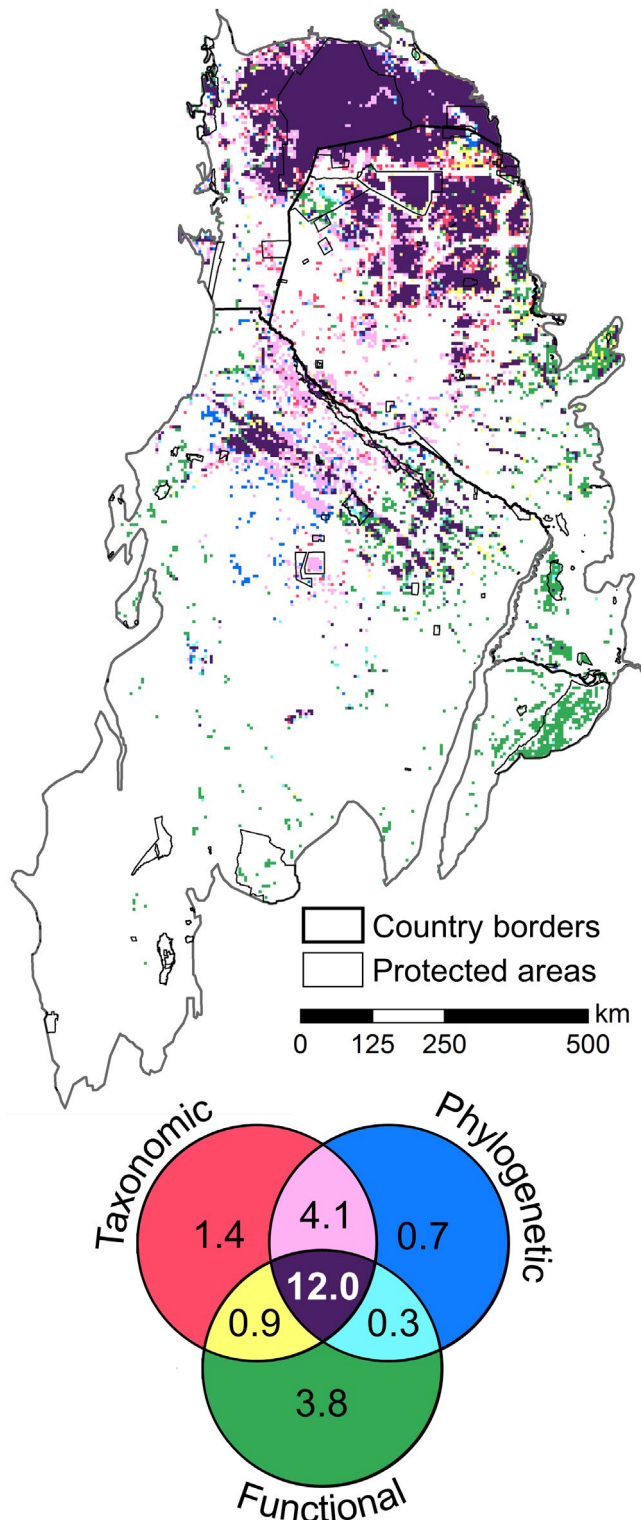
**FIGURE 5** Top 25%, 17%, 10%, and 5% of gridcells for each facet of mammalian diversity in the Chaco in 2015

whereas the relative importance of habitat destruction increased to 64% for FD. In addition, the relative importance of co-occurring threats increased slightly for all facets when focusing on those areas

experiencing highest loss in a facet (Figure 4b). The contributions of threats to facet declines were practically identical for the entire Chaco and the areas of the Chaco with communities with five or more species (Figure S7).

The spatial patterns of gridcells with highest facet values in 2015 were roughly similar among facets. The top 5%, 10%, 17%, and 25% of gridcells per facets were concentrated in the northern Chaco in southern Bolivia and northern Paraguay, and to a lesser extent in north-eastern Argentina (Figure 5). However, while the top 5% of cells for TD and PD were concentrated mainly in Bolivia, for FD the top-ranking cells also occurred in north-eastern Argentina, and in easternmost Argentinean Chaco in the 'Bañados del Iberá' area. Similarly, while the top 25% cells of TD and PD were scattered over large areas of the central Chaco, for FD they were mainly distributed in northern Paraguay and north-western Chaco in Bolivia (Figure 5). TD and PD were generally more spatially correlated (Spearman's  $\rho = 0.84$ ) than PD and FD ( $\rho = 0.83$ ), and FD and TD ( $\rho = 0.75$ ).

Considering the top 17% of gridcells per facet, all three facets overlapped across 12% of the Chaco, particularly in the northern Chaco in Bolivia and Paraguay, as well as to some extent in northern Argentina. However, between 1985 and 2015, the overlap among all three facets decreased by 3% of the 1985 value, particularly in northernmost Chaco in Bolivia, and several areas in Northern Paraguay. In 2015, TD and PD overlapped most strongly (on 16% of gridcells, with only about 1% of gridcells across the Chaco uniquely important for one facet). This was very different for FD, which overlapped less and where almost 4% of the Chaco was uniquely important for this facet (Figure 6). Overall, the cumulative area of the top 17% of all three facets of the mammalian diversity covered 23% of the entire Chaco. About a quarter (51,275–55,200 km<sup>2</sup>) of the top 17% areas for each facet were inside protected areas (TD: 26%, PD: 27%, FD: 30%).



**FIGURE 6** Overlap among the 17% of gridcells with the highest values for each of the three facets of mammalian diversity in the Chaco in 2015. Colours indicate facet overlap. The legend also indicates the per cent of the total Chaco area inside each combination of facets

## 4 | DISCUSSION

To better understand the impacts of people on nature, we need to learn how different facets of biodiversity change in response to anthropogenic threats. Here, we provide the first multi-decadal, broad-scale assessment of changes in all three biodiversity facets caused by specific threats. Furthermore, this is to our knowledge the first assessment of changes in multiple biodiversity facets for mammals and in the tropics. Using habitat maps for 48 larger mammals and the spatial footprints of habitat destruction and hunting, we assessed how these threats, individually and jointly, drive changes in mammalian diversity over 30 years across the 1.1 million km<sup>2</sup> Chaco. Our analyses reveal a general biotic impoverishment. This is illustrated by the rapid and widespread changes in mammalian communities, resulting in declines across all biodiversity facets. These changes were mainly driven by defaunation rather than by species turnover. Habitat destruction was the main threat responsible for declines

across facets, partly because it expanded over larger areas than did hunting pressure. However, hunting pressure became increasingly important where TD and PD declined the most, because hunting expanded especially into remote areas where these facets were still high. Although the most important remaining areas across the three facets showed moderate spatial congruence in 2015, some areas were uniquely important, particularly for functional diversity. As a result, 23% of the Chaco would have to be protected to safeguard the top 17% of all three facets. Yet, only about a quarter are currently protected. This corresponds to about 5% of the Chaco, which is even lower than the 9% of the Chaco under protection overall. Our work advances the understanding of where and how different threats drive changes in the facets of biodiversity. Such an understanding can inform conservation planning, to spatially target threat-specific actions to maintain all biodiversity facets.

The decline across biodiversity facets since 1985 reveals a generalized and widespread impoverishment of species numbers, evolutionary history, and ecological roles filled by larger mammals across the Chaco. The loss of PD includes the declines of lineages endemic to the Chaco, such as that of the Chacoan peccary and the Chacoan naked-tailed armadillo (*Cabassous Chacoensis*; Romero-Muñoz et al., 2020). FD decreased more drastically than other facets, as a result of the decline of mammals with key ecological roles, such as seed dispersers (e.g. maned wolf *Chrysocyon brachyurus* and tapir *Tapirus terrestris*), or top predators (e.g. jaguar *Panthera onca* and puma *Puma concolor*; Romero-Muñoz et al., 2020). Such declines in FD can have important implications for ecosystem functioning, such as forest regeneration and the regulation of herbivore and mesopredator abundances (Bello et al., 2015; Terborgh, 2015).

Temporal changes in species composition were mainly driven by changes in species richness, whereas species replacement played a smaller role. These findings strongly suggest that the overall dominance of changes in total richness, specifically species loss, also explains the downward trends we found for phylogenetic and functional diversity. Nevertheless, although turnover was less important, the replacement of some species with distinctive functions (e.g. the Azaras's capuchin monkey *Sapajus cay*) or phylogeny (e.g. the Chacoan naked-tailed armadillo) by less distinctive species may drive PD and FD declines in some communities. Our finding of the dominance of species loss contrasts with reported global trends, where species richness has been on average relatively stable over time across local studies, and turnover has been the main driver of community changes (Blowes et al., 2019; Dornelas et al., 2014). However, it is unclear what proportion of the communities assessed at global scale are under similarly high pressure from habitat destruction and hunting as communities in the Chaco.

The varying rates and spatial patterns of decline in biodiversity facets that we found suggest that trends observed for a single facet may conceal how other facets change. For instance, the higher similarity in the spatial patterns of decline of TD with PD than with FD suggests that TD is an imperfect surrogate for changes in other facets—although this is often assumed (Dornelas et al., 2014; McGill et al., 2015). Despite varying geographical patterns of decline, on

average all facets declined. This adds further evidence that change in biodiversity facets is context-specific, as exemplified for birds, where all facets changed in parallel in the United States (Jarzyna & Jetz, 2017), but not in France (Monnet et al., 2014). This also could imply that recently reported observations of long-term stability of local species richness, but high species turnover across the world (Blowes et al., 2019; Dornelas et al., 2014) may conceal important trends in other facets. Our work, the first from the tropical and subtropical biomes, thus reinforces calls based on studies from temperate regions (Jarzyna & Jetz, 2017; Monnet et al., 2014) to assess long-term change of all facets of biodiversity.

Our results advance the previously limited understanding of the downward trends of biodiversity facets in tropical deforestation frontiers. Although the calculation of FD and the comparison of temporal changes among facets were limited to communities with five or more species (see Section 2), these communities, mainly located in the northern half of the Chaco, faced most of the changes in land use and threat levels over the last three decades (Baumann et al., 2017; Romero-Muñoz et al., 2020). In contrast, areas in the southern Chaco for which FD could not be calculated remained largely stable since 1985 (Baumann et al., 2017; Romero-Muñoz et al., 2020). Overall, the changes we report represent considerable declines in one or more facets of mammalian diversity for tens of thousands of mammal communities. These troubling widespread declines across biodiversity facets may be common in deforestation frontiers, highlighting the urgency of assessing them in such regions. Furthermore, our work provides spatially explicit, fine-scale trends of change of biodiversity facets for individual communities in the Chaco.

A major advance of our approach is the ability to attribute declines in biodiversity facets to specific threats. The greater contribution of habitat destruction to declines across all facets is partly due to habitat destruction expanding over a ~41% larger area than hunting pressure. However, in the 25% of gridcells with the highest declines per facet, hunting pressure contributed more to TD and PD declines. This 25% of gridcells includes many remote and highly diverse areas. In total, over half the Chaco is currently impacted by one or the other threat, with co-occurring threats contributing much less to declines in all facets. This is partly because we only considered changes from core areas to areas under threat over time; when Romero-Muñoz et al. (2020) considered changes from one threat to multiple threats for TD, the importance of synergistic threats was substantial. Furthermore, it is important to note that we focus on core areas, whereas species could remain outside them. Yet, outside core areas species are affected by one or more threats, and may in many cases be locally functionally extinct, or committed to local extinction in the near future (Semper-Pascual et al., 2018). Overall, these results uncover the substantial and mutually amplifying importance of habitat destruction and overexploitation in deteriorating all facets of mammalian diversity.

Such large and widespread impacts of habitat destruction and hunting pressure on biodiversity facets may be common across tropical and subtropical deforestation frontiers. This is corroborated by

various studies reporting negative effects of habitat modification on biodiversity facets (e.g. Chapman et al., 2018; Frishkoff et al., 2014; Wordley et al., 2017). However, only studies focusing on TD have assessed the relative impact of multiple threats. In such studies, habitat destruction contributed more than overexploitation to TD declines in tropical mammals and birds, but with wide variation among species (Gallego-Zamorano et al., 2020; Romero-Muñoz et al., 2020; Symes et al., 2018), implying that responses into threats may differ between TD and other facets.

Indeed, while habitat destruction was the main contributor to decline across facets in our case as well, it was particularly important for declines in FD. In turn, hunting pressure was particularly prevalent where TD and PD declined the most. Such differences are likely due to different susceptibility of species to different threats as well as the different spatial footprints of threats. For instance, habitat destruction affected many species across much of the Chaco, whereas hunting pressure typically affected larger species more strongly and increased mainly in more remote areas (Figure S5). Our work therefore highlights the importance of simultaneously assessing the impact of multiple threats on multiple biodiversity facets and provides a novel framework to do so.

The three biodiversity facets we mapped showed moderate spatial congruence across the Chaco in 2015, with FD being more distinct than TD and PD (which were more congruent). This pattern appears to be mainly driven by FD being high in the 'Baños del Ibera' area in easternmost Chaco, likely because a few species with unique trait combinations, such as the marsh deer *Blastoceros dichotomus* or river otter *Lontra longicaudis*, concentrate in this savannah wetland (Romero-Muñoz et al., 2020). Our finding that FD had a more distinct spatial distribution than TD and PD at the regional scale corroborates patterns found for terrestrial birds and mammals (Pollock et al., 2017), and for marine mammals (Albouy et al., 2017) at the global scale. This underlines the importance of considering functional diversity in biodiversity assessments.

Our work contributes to conservation planning by detecting and mapping priorities for all facets of biodiversity at fine spatial resolutions. Identifying the most valuable areas per facet can help us to identify protection gaps and to prioritize areas for closing these gaps, which is important given that most conservation planning exercises have focused only on TD, but largely ignored PD and FD (Pressey et al., 2007). Furthermore, our approach allows us to map which threats affect different biodiversity facets and where. This can identify the best locations to implement threat-specific management actions, such as promoting forest recovery, fostering sustainable hunting (including the preferential targeting of hunting-resilient species such as rodents), through culturally appropriate education or sensitization programmes, or ensuring the land rights of Indigenous Peoples (Ripple et al., 2016). Such threat-specific actions are an increasingly important focus of conservation planning, yet have so far not focussed on multiple facets of biodiversity (Pressey et al., 2007; Tulloch et al., 2015). Our work illustrates how this can be achieved using the Chaco, a severely under-protected region in need of conservation planning, as a demonstration case (Periago et al., 2014).

In conclusion, our study reveals a widespread impoverishment in mammalian diversity, including in overall richness, evolutionary history, and ecological functions, across large areas in the Chaco since 1985. Our approach linking changes in biodiversity facets with specific threats allowed us to uncover how habitat destruction and hunting pressure individually and jointly drive declines across all biodiversity facets in this global deforestation hotspot. Our approach, along with the resulting indicators and maps, can inform conservation planning by governments and conservation organizations by identifying priority areas for facet protection and for threat-specific management interventions. Overall, our study advances the understanding of where and how multiple biodiversity facets change over time in response to different extinction drivers.

## ACKNOWLEDGEMENTS

We thank many researchers for sharing species and spatial datasets that enabled this study: M. Baumann, M. Camino, H. del Castillo, E. Cuéllar, R.L. Cuéllar, J. Decarre, A. J. Giordano, B. Gómez-Valencia, C. Levers, L. Maffei, R. Montaña, A.J. Noss, V. Quiroga, J. Thompson, R. Torres, M. Velilla, and A. Weiler. We also thank M. Fernandez, K. Rivero, the Wildlife Conservation Society-Bolivia, Museo de Historia Natural Noel Kempff Mercado for sharing further species data, J. Oeser and F. Pötzschner for assistance during the analysis, and Claire Wordley for very valuable comments and language revisions. We gratefully acknowledge funding by the German Research Foundation (DFG, project KU 2458/5-1), the German Ministry of Education and Research (BMBF, project PASANOVA, 031B0034A), and a Juan de la Cierva-Incorporación grant (IJCI-2017-31419) from the Spanish Ministry of Science, Innovation and Universities. We are grateful to two anonymous reviewers for very thoughtful and constructive comments on a prior version of the manuscript. Open access funding enabled and organized by Projekt DEAL.

## DATA AVAILABILITY STATEMENT

Data available on request from the authors.

## ORCID

Alfredo Romero-Muñoz  <https://orcid.org/0000-0002-7905-6087>

Guillermo Fandos  <https://orcid.org/0000-0003-1579-9444>

Ana Benítez-López  <https://orcid.org/0000-0002-6432-1837>

Tobias Kuemmerle  <https://orcid.org/0000-0002-9775-142X>

## REFERENCES

- Albouy, C., Delattre, V. L., Mérigot, B., Meynard, C. N., & Leprieux, F. (2017). Multifaceted biodiversity hotspots of marine mammals for conservation priorities. *Diversity and Distributions*, 23(6), 615–626. <https://doi.org/10.1111/ddi.12556>
- Allan, J. R., Watson, J. E., Di Marco, M., O'Bryan, C. J., Possingham, H. P., Atkinson, S. C., & Venter, O. (2019). Hotspots of human impact on threatened terrestrial vertebrates. *PLOS Biology*, 17(3), e3000158. <https://doi.org/10.1371/journal.pbio.3000158>
- Barlow, J., França, F., Gardner, T. A., Hicks, C. C., Lennox, G. D., Berenguer, E., & Guénard, B. (2018). The future of hyperdiverse tropical ecosystems. *Nature*, 559(7715), 517–526.

- Barlow, J., Lennox, G. D., Ferreira, J., Berenguer, E., Lees, A. C., Nally, R. M., Thomson, J. R., Ferraz, S. F. D. B., Louzada, J., Oliveira, V. H. F., Parry, L., Ribeiro de Castro Solar, R., Vieira, I. C. G., Aragão, L. E. O. C., Begotti, R. A., Braga, R. F., Cardoso, T. M., de Oliveira Jr., R. C., Souza Jr., C. M., ... Gardner, T. A. (2016). Anthropogenic disturbance in tropical forests can double biodiversity loss from deforestation. *Nature*, 535(7610), 1–16. <https://doi.org/10.1038/nature18326>
- Baselga, A. (2010). Partitioning the turnover and nestedness components of beta diversity. *Global Ecology and Biogeography*, 19(1), 134–143. <https://doi.org/10.1111/j.1466-8238.2009.00490.x>
- Baselga, A., & Orme, C. D. L. (2012). betapart: An R package for the study of beta diversity. *Methods in Ecology and Evolution*, 3(5), 808–812.
- Baumann, M., Gasparri, I., Piquer-Rodríguez, M., Gavier Pizarro, G., Griffiths, P., Hostert, P., & Kuemmerle, T. (2017). Carbon emissions from agricultural expansion and intensification in the Chaco. *Global Change Biology*, 23(5), 1902–1916. <https://doi.org/10.1111/gcb.13521>
- Bello, C., Galetti, M., Pizo, M. A., Magnago, L. F. S., Rocha, M. F., Lima, R. A. F., Peres, C. A., Ovaskainen, O., & Jordano, P. (2015). Defaunation affects carbon storage in tropical forests. *Science Advances*, 1(11), e1501105. <https://doi.org/10.1126/sciadv.1501105>
- Benítez-López, A., Alkemade, R., Schipper, A. M., Ingram, D. J., Verweij, P. A., Eikelboom, J. A., & Huijbregts, M. A. (2017). The impact of hunting on tropical mammal and bird populations. *Science*, 356(6334), 180–183. <https://doi.org/10.1126/science.aaj1891>
- Benítez-López, A., Santini, L., Schipper, A. M., Busana, M., & Huijbregts, M. A. J. (2019). Intact but empty forests? Patterns of hunting-induced mammal defaunation in the tropics. *PLOS Biology*, 17(5), e3000247. <https://doi.org/10.1371/journal.pbio.3000247>
- Blowes, S. A., Supp, S. R., Antão, L. H., Bates, A., Bruelheide, H., Chase, J. M., & Myers-Smith, I. H. (2019). The geography of biodiversity change in marine and terrestrial assemblages. *Science*, 366(6463), 339–345.
- Bradshaw, C. J. A., Sodhi, N. S., & Brook, B. W. (2009). Tropical turmoil: A biodiversity tragedy in progress. *Frontiers in Ecology and the Environment*, 7(2), 79–87. <https://doi.org/10.1890/070193>
- Brook, B. W., Sodhi, N. S., & Bradshaw, C. (2008). Synergies among extinction drivers under global change. *Trends in Ecology & Evolution*, 23(8), 453–460. <https://doi.org/10.1016/j.tree.2008.03.011>
- Brum, F. T., Graham, C. H., Costa, G. C., Hedges, S. B., Penone, C., Radeloff, V. C., Rondinini, C., Loyola, R., & Davidson, A. D. (2017). Global priorities for conservation across multiple dimensions of mammalian diversity. *Proceedings of the National Academy of Sciences of the United States of America*, 114(29), 7641–7646. <https://doi.org/10.1073/pnas.1706461114>
- Cadotte, M. W., Carscadden, K., & Mirotchnick, N. (2011). Beyond species: Functional diversity and the maintenance of ecological processes and services. *Journal of Applied Ecology*, 48(5), 1079–1087. <https://doi.org/10.1111/j.1365-2664.2011.02048.x>
- Cadotte, M. W., & Tucker, C. M. (2018). Difficult decisions: Strategies for conservation prioritization when taxonomic, phylogenetic and functional diversity are not spatially congruent. *Biological Conservation*, 225, 128–133. <https://doi.org/10.1016/j.biocon.2018.06.014>
- Cardinale, B. J., Duffy, J. E., Gonzalez, A., Hooper, D. U., Perrings, C., Venail, P., & Naeem, S. (2012). Biodiversity loss and its impact on humanity. *Nature*, 489(7415), 326. <https://doi.org/10.1038/nature11373>
- Chapman, P. M., Tobias, J. A., Edwards, D. P., & Davies, R. G. (2018). Contrasting impacts of land-use change on phylogenetic and functional diversity of tropical forest birds. *Journal of Applied Ecology*, 55(4), 1604–1614. <https://doi.org/10.1111/1365-2664.13073>
- D'agata, S., Mouillot, D., Kulbicki, M., Andréfouët, S., Bellwood, D. R., Cinner, J. E., Cowman, P. F., Kronen, M., Pinca, S., & Vigliola, L. (2014). Human-mediated loss of phylogenetic and functional diversity in coral reef fishes. *Current Biology*, 24(5), 555–560. <https://doi.org/10.1016/j.cub.2014.01.049>
- Damgaard, C. (2019). A critique of the space-for-time substitution practice in community ecology. *Trends in Ecology & Evolution*, 34(5), 416–421. <https://doi.org/10.1016/j.tree.2019.01.013>
- Davis, M., Faurby, S., & Svenning, J.-C. (2018). Mammal diversity will take millions of years to recover from the current biodiversity crisis. *Proceedings of the National Academy of Sciences of the United States of America*, 115(44), 11262–11267. <https://doi.org/10.1073/pnas.1804906115>
- Devictor, V., Mouillot, D., Meynard, C., Jiguet, F., Thuiller, W., & Mouquet, N. (2010). Spatial mismatch and congruence between taxonomic, phylogenetic and functional diversity: The need for integrative conservation strategies in a changing world. *Ecology Letters*, 13(8), 1030–1040. <https://doi.org/10.1111/j.1461-0248.2010.01493.x>
- Díaz, S., Settele, J., Brondízio, E. S., Ngo, H. T., Agard, J., Arneth, A., & Chan, K. M. (2019). Pervasive human-driven decline of life on Earth points to the need for transformative change. *Science*, 366(6471), 1–12.
- Dornelas, M., Gotelli, N. J., McGill, B., Shimadzu, H., Moyes, F., Sievers, C., & Magurran, A. E. (2014). Assemblage time series reveal biodiversity change but not systematic loss. *Science*, 344(6181), 296–299.
- Faith, D. P. (1992). Conservation evaluation and phylogenetic diversity. *Biological Conservation*, 61(1), 1–10. [https://doi.org/10.1016/0006-3207\(92\)91201-3](https://doi.org/10.1016/0006-3207(92)91201-3)
- Faurby, S., Davis, M., Pedersen, R. Ø., Schowaneck, S. D., Antonelli, A., & Svenning, J. C. (2018). PHYLOCACINE 1.2: The phylogenetic atlas of mammal macroecology. *Ecology*, 99(11), 2626.
- Ficetola, G. F., Rondinini, C., Bonardi, A., Katariya, V., Padoa-Schioppa, E., & Angulo, A. (2014). An evaluation of the robustness of global amphibian range maps. *Journal of Biogeography*, 41(2), 211–221. <https://doi.org/10.1111/jbi.12206>
- Frishkoff, L. O., Karp, D. S., M'Gonigle, L. K., Mendenhall, C. D., Zook, J., Kremen, C., & Daily, G. C. (2014). Loss of avian phylogenetic diversity in neotropical agricultural systems. *Science*, 345(6202), 1343–1346.
- Gallejo-Zamorano, J., Benítez-López, A., Santini, L., Hilbers, J. P., Huijbregts, M. A., & Schipper, A. M. (2020). Combined effects of land use and hunting on distributions of tropical mammals. *Conservation Biology*. <https://doi.org/10.1111/cobi.13459>
- Grenié, M., Denelle, P., Tucker, C. M., Munoz, F., & Violle, C. (2017). funrar: An R package to characterize functional rarity. *Diversity and Distributions*, 23(12), 1365–1371. <https://doi.org/10.1111/ddi.12629>
- Hansen, M. C., Potapov, P. V., Moore, R., Hancher, M., Turubanova, S. A., Tyukavina, A., Thau, D., Stehman, S. V., Goetz, S. J., Loveland, T. R., Kommareddy, A., Egorov, A., Chini, L., Justice, C. O., & Townshend, J. R. G. (2013). High-resolution global maps of 21st-century forest cover change. *Science*, 342(6160), 850–853. <https://doi.org/10.1126/science.1244693>
- Hoekstra, J. M., Boucher, T. M., Ricketts, T. H., & Roberts, C. J. E. (2005). Confronting a biome crisis: Global disparities of habitat loss and protection. *Ecology Letters*, 8(1), 23–29. <https://doi.org/10.1111/j.1461-0248.2004.00686.x>
- Hooper, D. U., Adair, E. C., Cardinale, B. J., Byrnes, J. E., Hungate, B. A., Matulich, K. L., & O'Connor, M. I. (2012). A global synthesis reveals biodiversity loss as a major driver of ecosystem change. *Nature*, 486(7401), 105–108.
- IPBES. (2019). *Global assessment report on biodiversity and ecosystem services of the Intergovernmental Science-Policy Platform on Biodiversity and Ecosystem Services*. Bonn, Germany: IPBES Secretariat.
- IUCN. (2012). *IUCN Red List categories and criteria* (2nd ed.). Author.
- Jarzyna, M. A., & Jetz, W. (2017). A near half-century of temporal change in different facets of avian diversity. *Global Change Biology*, 23(8), 2999–3011. <https://doi.org/10.1111/gcb.13571>
- Jones, K. E., Bielby, J., Cardillo, M., Fritz, S. A., O'Dell, J., Orme, C. D. L., Safi, K., Sechrest, W., Boakes, E. H., Carbone, C., Connolly, C.,

- Cutts, M. J., Foster, J. K., Grenyer, R., Habib, M., Plaster, C. A., Price, S. A., Rigby, E. A., Rist, J., ... Purvis, A. (2009). PanTHERIA: A species-level database of life history, ecology, and geography of extant and recently extinct mammals. *Ecology*, *90*(9), 2648. <https://doi.org/10.1890/08-1494.1>
- Kehoe, L., Romero-Muñoz, A., Polaina, E., Estes, L., Kreft, H., & Kuemmerle, T. (2017). Biodiversity at risk under future cropland expansion and intensification. *Nature Ecology & Evolution*, *1*(8), 1129–1135. <https://doi.org/10.1038/s41559-017-0234-3>
- Kembel, S. W., Cowan, P. D., Helmus, M. R., Cornwell, W. K., Morlon, H., Ackerly, D. D., Blomberg, S. P., & Webb, C. O. (2010). Picante: R tools for integrating phylogenies and ecology. *Bioinformatics*, *26*(11), 1463–1464. <https://doi.org/10.1093/bioinformatics/btq166>
- Kerbrirou, C., Le Viol, I., Jiguet, F., & Devictor, V. (2009). More species, fewer specialists: 100 years of changes in community composition in an island biogeographical study. *Diversity and Distributions*, *15*(4), 641–648. <https://doi.org/10.1111/j.1472-4642.2009.00569.x>
- Kuemmerle, T., Altrichter, M., Baldi, G., Cabido, M., Camino, M., Cuellar, E., & Zak, M. (2017). Forest conservation: Remember Gran Chaco. *Science*, *355*(6324), 465.
- Lacher, T. E., Davidson, A. D., Fleming, T. H., Gómez-Ruiz, E. P., McCracken, G. F., Owen-Smith, N., Peres, C. A., & Vander Wall, S. B. (2019). The functional roles of mammals in ecosystems. *Journal of Mammalogy*, *100*(3), 942–964. <https://doi.org/10.1093/jmammal/gyy183>
- Laliberté, E., & Legendre, P. (2010). A distance-based framework for measuring functional diversity from multiple traits. *Ecology*, *91*(1), 299–305. <https://doi.org/10.1890/08-2244.1>
- Laurance, W. F., Goosem, M., & Laurance, S. G. W. (2009). Impacts of roads and linear clearings on tropical forests. *Trends in Ecology & Evolution*, *24*(12), 659–669. <https://doi.org/10.1016/j.tree.2009.06.009>
- Liu, C., White, M., & Newell, G. (2013). Selecting thresholds for the prediction of species occurrence with presence-only data. *Journal of Biogeography*, *40*(4), 778–789. <https://doi.org/10.1111/jbi.12058>
- Maire, E., Grenouillet, G., Brosse, S., & Villéger, S. (2015). How many dimensions are needed to accurately assess functional diversity? A pragmatic approach for assessing the quality of functional spaces. *Global Ecology and Biogeography*, *24*(6), 728–740. <https://doi.org/10.1111/geb.12299>
- Maxwell, S. L., Fuller, R. A., Brooks, T. M., & Watson, J. E. M. (2016). The ravages of guns, nets and bulldozers. *Nature*, *536*(7615), 143–145. <https://doi.org/10.1038/536143a>
- Mazel, F., Pennell, M. W., Cadotte, M. W., Diaz, S., Dalla Riva, G. V., Grenyer, R., Leprieux, F., Mooers, A. O., Mouillot, D., Tucker, C. M., & Pearse, W. D. (2018). Prioritizing phylogenetic diversity captures functional diversity unreliably. *Nature Communications*, *9*(1), 2888. <https://doi.org/10.1038/s41467-018-05126-3>
- McGill, B. J., Dornelas, M., Gotelli, N. J., & Magurran, A. E. (2015). Fifteen forms of biodiversity trend in the Anthropocene. *Trends in Ecology & Evolution*, *30*(2), 104–113. <https://doi.org/10.1016/j.tree.2014.11.006>
- Monnet, A. C., Jiguet, F., Meynard, C. N., Mouillot, D., Mouquet, N., Thuiller, W., & Devictor, V. (2014). Asynchrony of taxonomic, functional and phylogenetic diversity in birds. *Global Ecology and Biogeography*, *23*(7), 780–788. <https://doi.org/10.1111/geb.12179>
- Mouillot, D., Graham, N. A., Villéger, S., Mason, N. W., & Bellwood, D. R. (2013). A functional approach reveals community responses to disturbances. *Trends in Ecology & Evolution*, *28*(3), 167–177. <https://doi.org/10.1016/j.tree.2012.10.004>
- Myers, P., Espinosa, R., Parr, C., Jones, T., Hammond, G., & Dewey, T. (2019). *The animal diversity web*. <https://animaldiversity.org/>
- Newbold, T., Bentley, L. F., Hill, S. L. L., Edgar, M. J., Horton, M., Su, G., Şekercioğlu, Ç. H., Collen, B., & Purvis, A. (2020). Global effects of land use on biodiversity differ among functional groups. *Functional Ecology*, *34*(3), 684–693. <https://doi.org/10.1111/1365-2435.13500>
- Nori, J., Torres, R., Lescano, J. N., Cordier, J. M., Periago, M. E., & Baldo, D. (2016). Protected areas and spatial conservation priorities for endemic vertebrates of the Gran Chaco, one of the most threatened ecoregions of the world. *Diversity and Distributions*, *22*(12), 1212–1219. <https://doi.org/10.1111/ddi.12497>
- Noss, A. J., Cuéllar, E., & Cuéllar, R. L. (2004). An evaluation of hunter self-monitoring in the Bolivian Chaco. *Human Ecology*, *32*(6), 685–702. <https://doi.org/10.1007/s10745-004-6832-0>
- Nowakowski, A. J., Frishkoff, L. O., Thompson, M. E., Smith, T. M., & Todd, B. D. (2018). Phylogenetic homogenization of amphibian assemblages in human-altered habitats across the globe. *Proceedings of the National Academy of Sciences of the United States of America*, *115*(15), E3454–E3462. <https://doi.org/10.1073/pnas.1714891115>
- Peres, C. A. (2001). Synergistic effects of subsistence hunting and habitat fragmentation on Amazonian forest vertebrates. *Conservation Biology*, *15*(6), 1490–1505. <https://doi.org/10.1046/j.1523-1739.2001.01089.x>
- Periago, M. E., Chillo, V., & Ojeda, R. A. (2014). Loss of mammalian species from the South American Gran Chaco: Empty savanna syndrome? *Mammal Review*, n/a–n/a. <https://doi.org/10.1111/mam.12031>
- Petchev, O. L., & Gaston, K. J. (2002). Functional diversity (FD), species richness and community composition. *Ecology Letters*, *5*(3), 402–411. <https://doi.org/10.1046/j.1461-0248.2002.00339.x>
- Phillips, S., Anderson, R. P., Dudík, M., Schapire, R., & Blair, M. (2017). Opening the black box: An open-source release of Maxent. *Ecography*, *40*(7), 887–893. <https://doi.org/10.1111/ecog.02537>
- Pollock, L. J., Thuiller, W., & Jetz, W. (2017). Large conservation gains possible for global biodiversity facets. *Nature*, *546*(7656), 141–144. <https://doi.org/10.1038/nature22368>
- Pressey, R. L., Cabeza, M., Watts, M. E., Cowling, R. M., & Wilson, K. A. (2007). Conservation planning in a changing world. *Trends in Ecology & Evolution*, *22*(11), 583–592. <https://doi.org/10.1016/j.tree.2007.10.001>
- Revell, L. J. (2012). phytools: An R package for phylogenetic comparative biology (and other things). *Methods in Ecology and Evolution*, *3*(2), 217–223. <https://doi.org/10.1111/j.2041-210X.2011.00169.x>
- Ripple, W. J., Abernethy, K., Betts, M. G., Chapron, G., Dirzo, R., Galetti, M., Levi, T., Lindsey, P. A., Macdonald, D. W., Machovina, B., Newsome, T. M., Peres, C. A., Wallach, A. D., Wolf, C., & Young, H. (2016). Bushmeat hunting and extinction risk to the world's mammals. *Royal Society Open Science*, *3*(10), 160498. <https://doi.org/10.1098/rsos.160498>
- Ripple, W. J., Wolf, C., Newsome, T. M., Hoffmann, M., Wirsing, A. J., & McCauley, D. J. (2017). Extinction risk is most acute for the world's largest and smallest vertebrates. *Proceedings of the National Academy of Sciences of the United States of America*, *114*(40), 10678–10683. <https://doi.org/10.1073/pnas.1702078114>
- Romero-Muñoz, A., Benítez-López, A., Zurell, D., Baumann, M., Camino, M., Decarre, J., Castillo, H., Giordano, A. J., Gómez-Valencia, B., Levers, C., Noss, A. J., Quiroga, V., Thompson, J. J., Torres, R., Velilla, M., Weiler, A., & Kuemmerle, T. (2020). Increasing synergistic effects of habitat destruction and hunting on mammals over three decades in the Gran Chaco. *Ecography*, *43*, 954–966. <https://doi.org/10.1111/ecog.05053>
- Romero-Muñoz, A., Torres, R., Noss, A. J., Giordano, A. J., Quiroga, V., Thompson, J. J., Baumann, M., Altrichter, M., McBride, R., Velilla, M., Arispe, R., & Kuemmerle, T. (2019). Habitat loss and overhunting synergistically drive the extirpation of jaguars from the Gran Chaco. *Diversity and Distributions*, *25*(2), 176–190. <https://doi.org/10.1111/ddi.12843>
- Safi, K., Cianciaruso, M. V., Loyola, R. D., Brito, D., Armour-Marshall, K., & Diniz-Filho, J. A. F. (2011). Understanding global patterns of mammalian functional and phylogenetic diversity. *Philosophical Transactions of the Royal Society B: Biological Sciences*, *366*(1577), 2536–2544.
- Semper-Pascual, A., Macchi, L., Sabatini, F. M., Decarre, J., Baumann, M., Blendinger, P. G., Gómez-Valencia, B., Mastrangelo, M. E., &

- Kuemmerle, T. (2018). Mapping extinction debt highlights conservation opportunities for birds and mammals in the South American Chaco. *Journal of Applied Ecology*, 55(3), 1218–1229. <https://doi.org/10.1111/1365-2664.13074>
- Symes, W. S., Edwards, D. P., Miettinen, J., Rheindt, F. E., & Carrasco, L. R. (2018). Combined impacts of deforestation and wildlife trade on tropical biodiversity are severely underestimated. *Nature Communications*, 9(1), 4052. <https://doi.org/10.1038/s41467-018-06579-2>
- Tacutu, R., Craig, T., Budovsky, A., Wuttke, D., Lehmann, G., Taranukha, D., Costa, J., Fraiefeld, V. E., & De Magalhães, J. P. (2012). Human Ageing Genomic Resources: Integrated databases and tools for the biology and genetics of ageing. *Nucleic Acids Research*, 41(D1), D1027–D1033. <https://doi.org/10.1093/nar/gks1155>
- Terborgh, J. W. (2015). Toward a trophic theory of species diversity. *Proceedings of the National Academy of Sciences of the United States of America*, 112(37), 11415–11422. <https://doi.org/10.1073/pnas.1501070112>
- Tingley, M. W., & Beissinger, S. R. (2013). Cryptic loss of montane avian richness and high community turnover over 100 years. *Ecology*, 94(3), 598–609. <https://doi.org/10.1890/12-0928.1>
- Tittensor, D. P., Walpole, M., Hill, S. L. L., Boyce, D. G., Britten, G. L., Burgess, N. D., & Ye, Y. (2014). A mid-term analysis of progress towards international biodiversity targets. *Science*, 346(6206), 241–244. <https://doi.org/10.1126/science.1257484>
- TNC, Fvs, FDSC, & WCS. (2005). *Evaluación ecorregional del Gran Chaco Americano*. Fundación Vida Silvestre Argentina.
- Tulloch, V. J. D., Tulloch, A. I. T., Visconti, P., Halpern, B. S., Watson, J. E. M., Evans, M. C., Auerbach, N. A., Barnes, M., Beger, M., Chadès, I., Giakoumi, S., McDonald-Madden, E., Murray, N. J., Ringma, J., & Possingham, H. P. (2015). Why do we map threats? Linking threat mapping with actions to make better conservation decisions. *Frontiers in Ecology and the Environment*, 13(2), 91–99. <https://doi.org/10.1890/140022>
- UNEP-WCMC, & IUCN. (2019). *Protected planet: The world database on protected areas (WDPA)*. [protectedplanet.net](http://protectedplanet.net)
- Villéger, S., Mason, N. W., & Moullot, D. (2008). New multidimensional functional diversity indices for a multifaceted framework in functional ecology. *Ecology*, 89(8), 2290–2301. <https://doi.org/10.1890/07-1206.1>
- Villéger, S., Miranda, J. R., Hernández, D. F., & Moullot, D. (2010). Contrasting changes in taxonomic vs. functional diversity of tropical fish communities after habitat degradation. *Ecological Applications*, 20(6), 1512–1522.
- Violle, C., Thuiller, W., Mouquet, N., Munoz, F., Kraft, N. J. B., Cadotte, M. W., Livingstone, S. W., & Moullot, D. (2017). Functional rarity: The ecology of outliers. *Trends in Ecology & Evolution*, 32(5), 356–367. <https://doi.org/10.1016/j.tree.2017.02.002>
- Wilman, H., Belmaker, J., Simpson, J., de la Rosa, C., Rivadeneira, M. M., & Jetz, W. (2014). EltonTraits 1.0: Species-level foraging attributes of the world's birds and mammals. *Ecology*, 95(7), 2027.
- Winter, M., Devictor, V., & Schweiger, O. (2013). Phylogenetic diversity and nature conservation: Where are we? *Trends in Ecology & Evolution*, 28(4), 199–204. <https://doi.org/10.1016/j.tree.2012.10.015>
- Wordley, C. F., Sankaran, M., Mudappa, D., & Altringham, J. D. (2017). Bats in the Ghats: Agricultural intensification reduces functional diversity and increases trait filtering in a biodiversity hotspot in India. *Biological Conservation*, 210, 48–55. <https://doi.org/10.1016/j.biocon.2017.03.026>
- WWF. (2015). *Living forests report: Saving forests at risk*. Gland, Switzerland: WWF.

## SUPPORTING INFORMATION

Additional supporting information may be found online in the Supporting Information section.

**How to cite this article:** Romero-Muñoz A, Fandos G, Benítez-López A, Kuemmerle T. Habitat destruction and overexploitation drive widespread declines in all facets of mammalian diversity in the Gran Chaco. *Glob Change Biol.* 2021;27:755–767. <https://doi.org/10.1111/gcb.15418>